

LIVING WITH THE LAND, LIVING WITH THE CHANGING CLIMATE

A scaled approach to assessment and action



Chris Swanston, Forest Service
Director, Northern Institute of Applied Climate Science
Director, USDA Midwest Regional Climate sub-Hub (forestry)

www.forestadaptation.org

Climate Change Response Framework

www.forestadaptation.org



Climate Change Resource Center

www.fs.fed.us/ccrc



and 100+
partners...



Climate Change Response Framework

www.forestadaptation.org

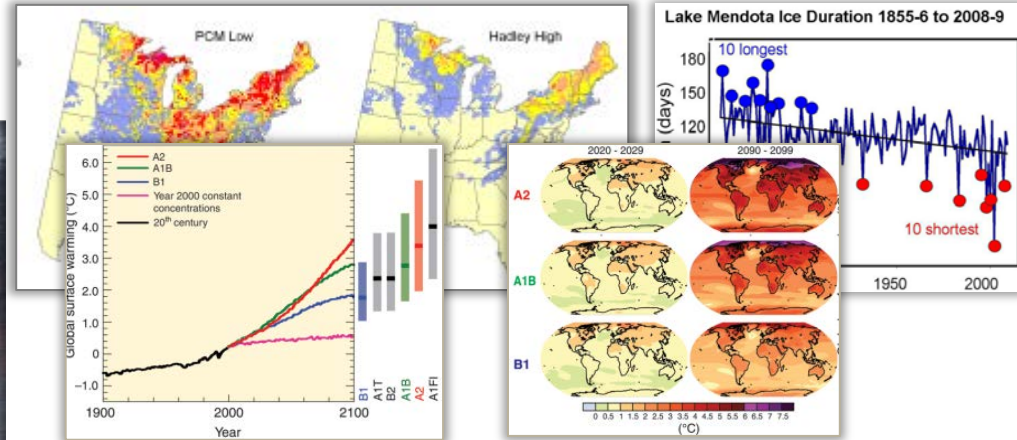


Climate Change Resource Center

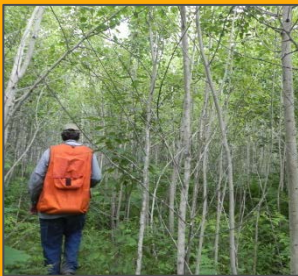
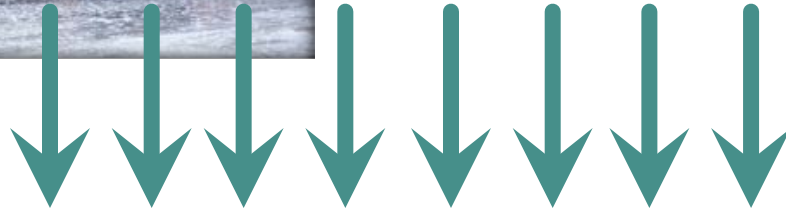
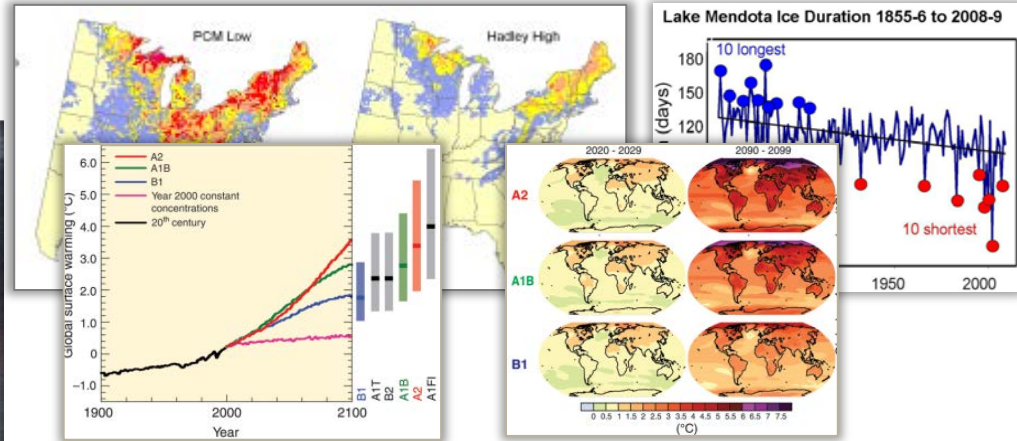
www.fs.fed.us/ccrc



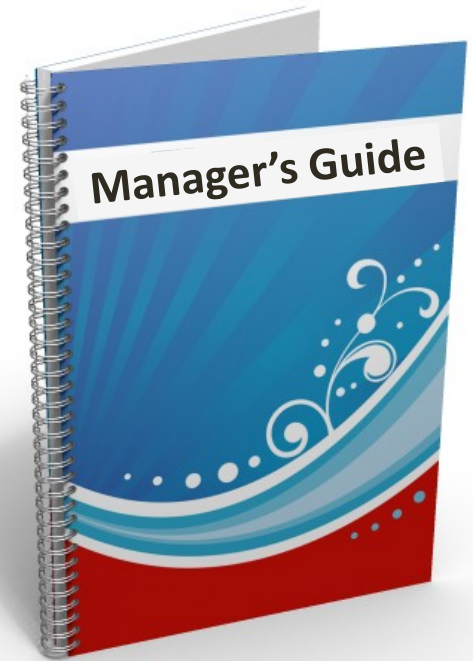
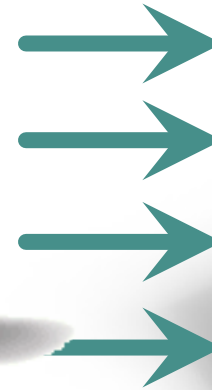
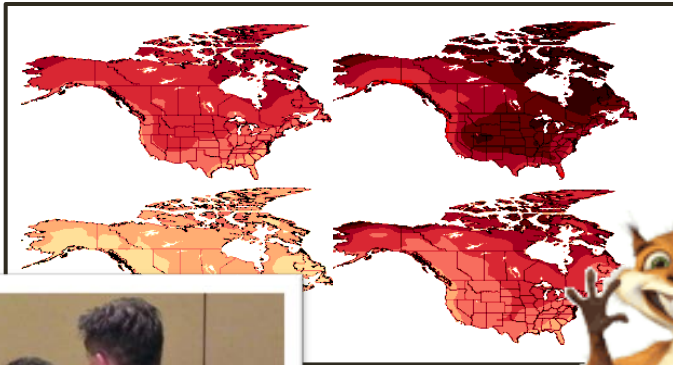
When we started...



When we started...



So we thought we'd...



Then we listened



We developed resources

Ecoregional Vulnerability Assessments



Audience: Land managers

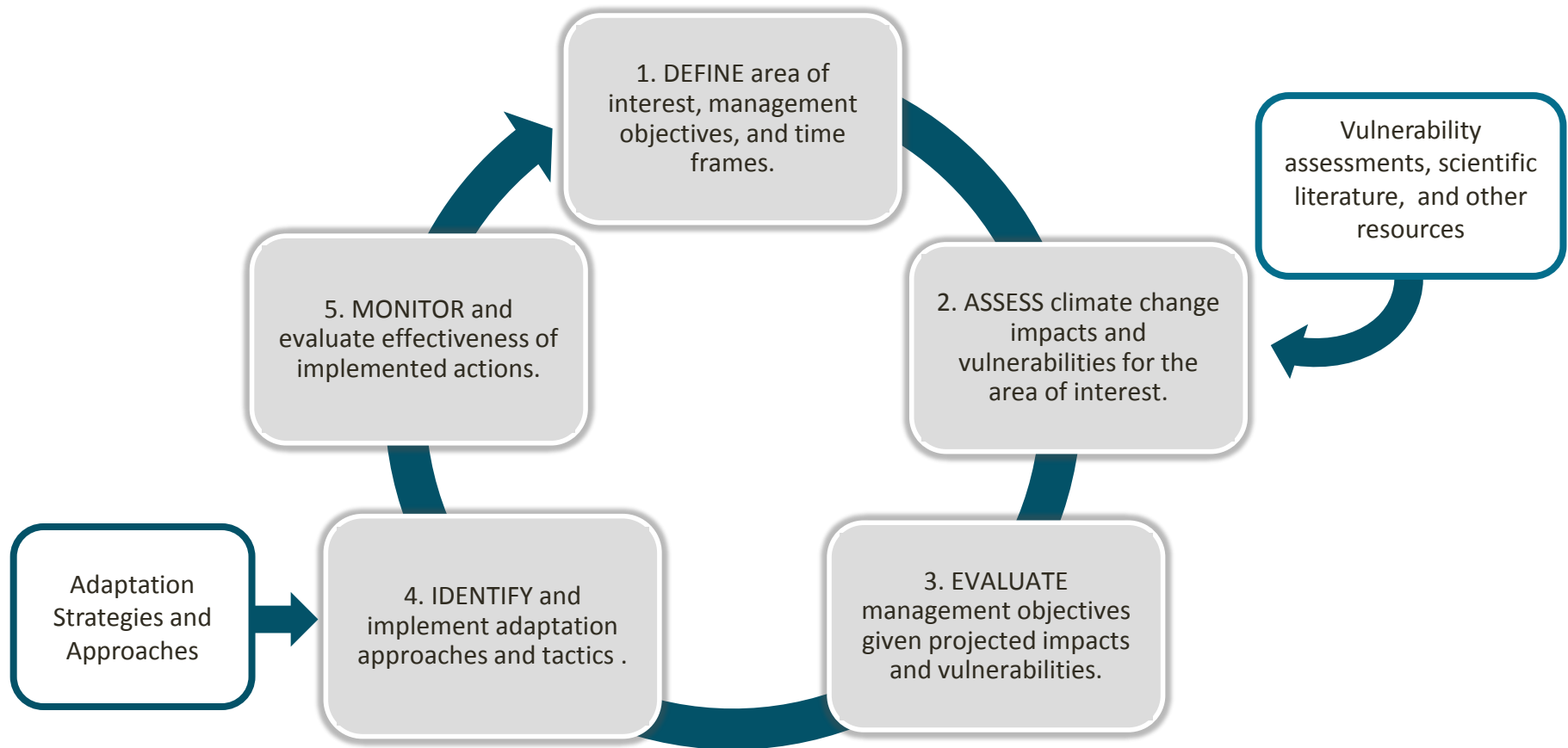
Scope: Forest ecosystems

Vulnerability of:

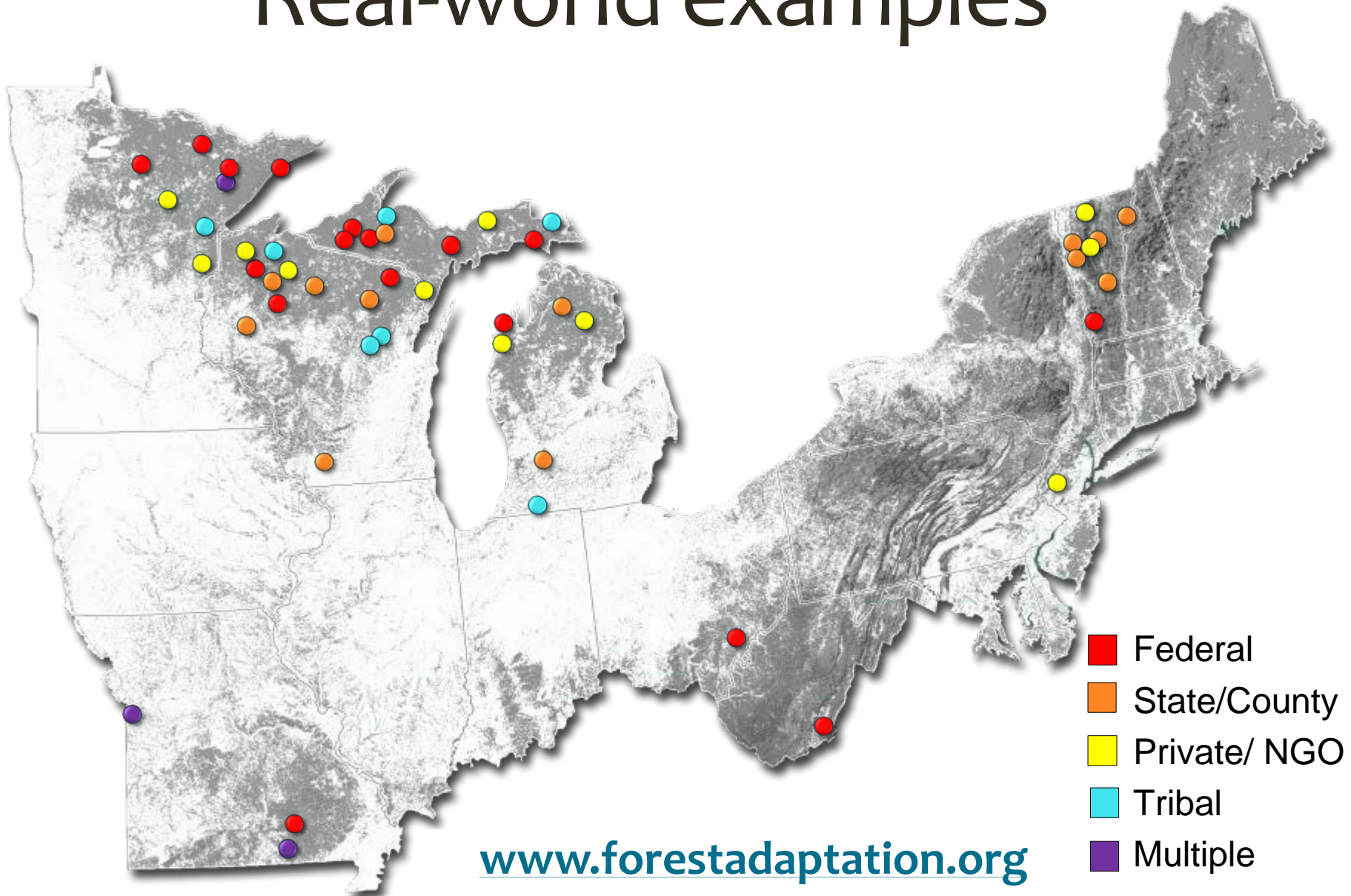
- Tree species
- Forest/natural communities

Place based, model-informed, expert-driven, transparent

and an approach to use them



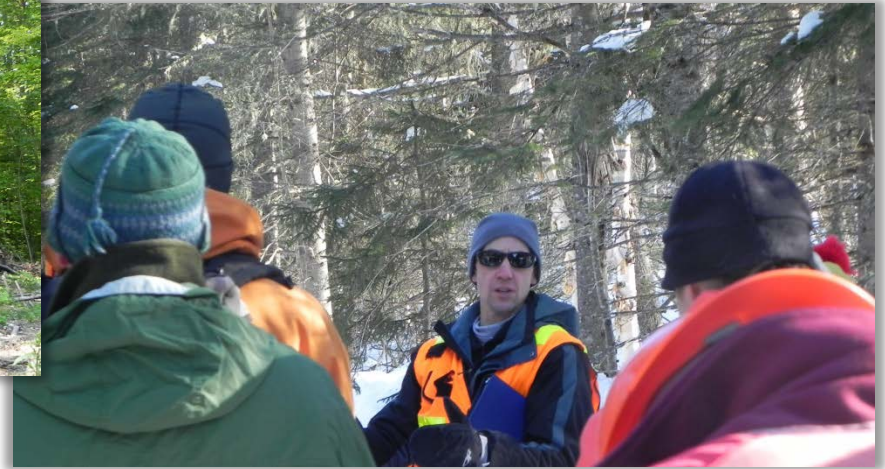
Real-world examples



www.forestadaptation.org

Our approach is pretty
simple....

Listen to people and their needs



Consider the
place
and its realities



Consider the
place
and its realities



Be creative & flexible



Final thoughts

Assessments inform decisions, we approach them in two directions:

- Top-down: global/regional information “downscaled”
- Bottom-up: place-based assessment informs action

Climate-informed decisions are typically about people and place, not about climate.

Your place, your knowledge, your decision.

