

# Hudson to Housatonic Conservation Initiative (H2H)

## Workshop: H2H Conservation in a Changing Climate

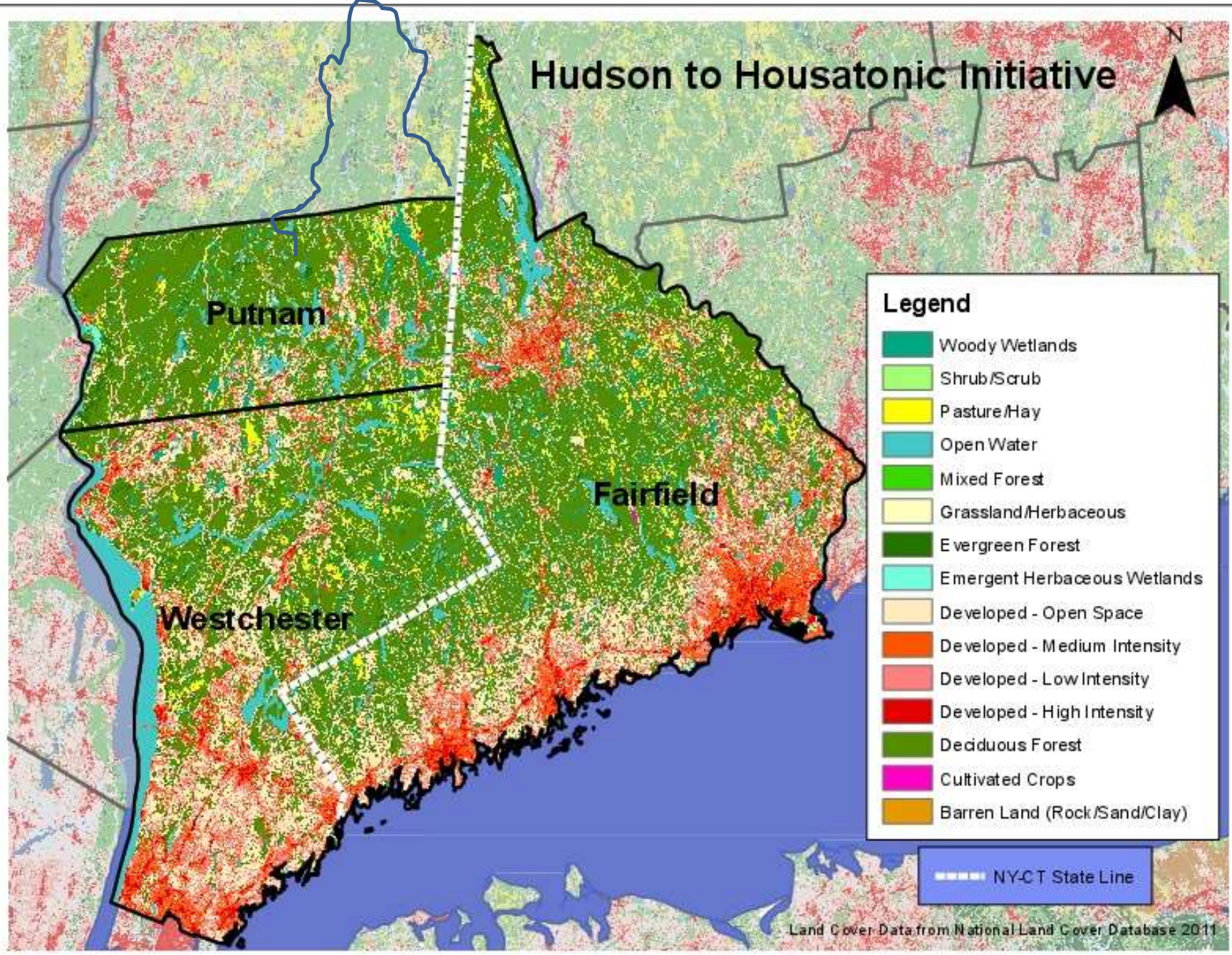
**Thursday, December 11<sup>th</sup>**

Highstead Barn

127 Lonetown Road

Redding, CT

# Hudson to Housatonic Initiative

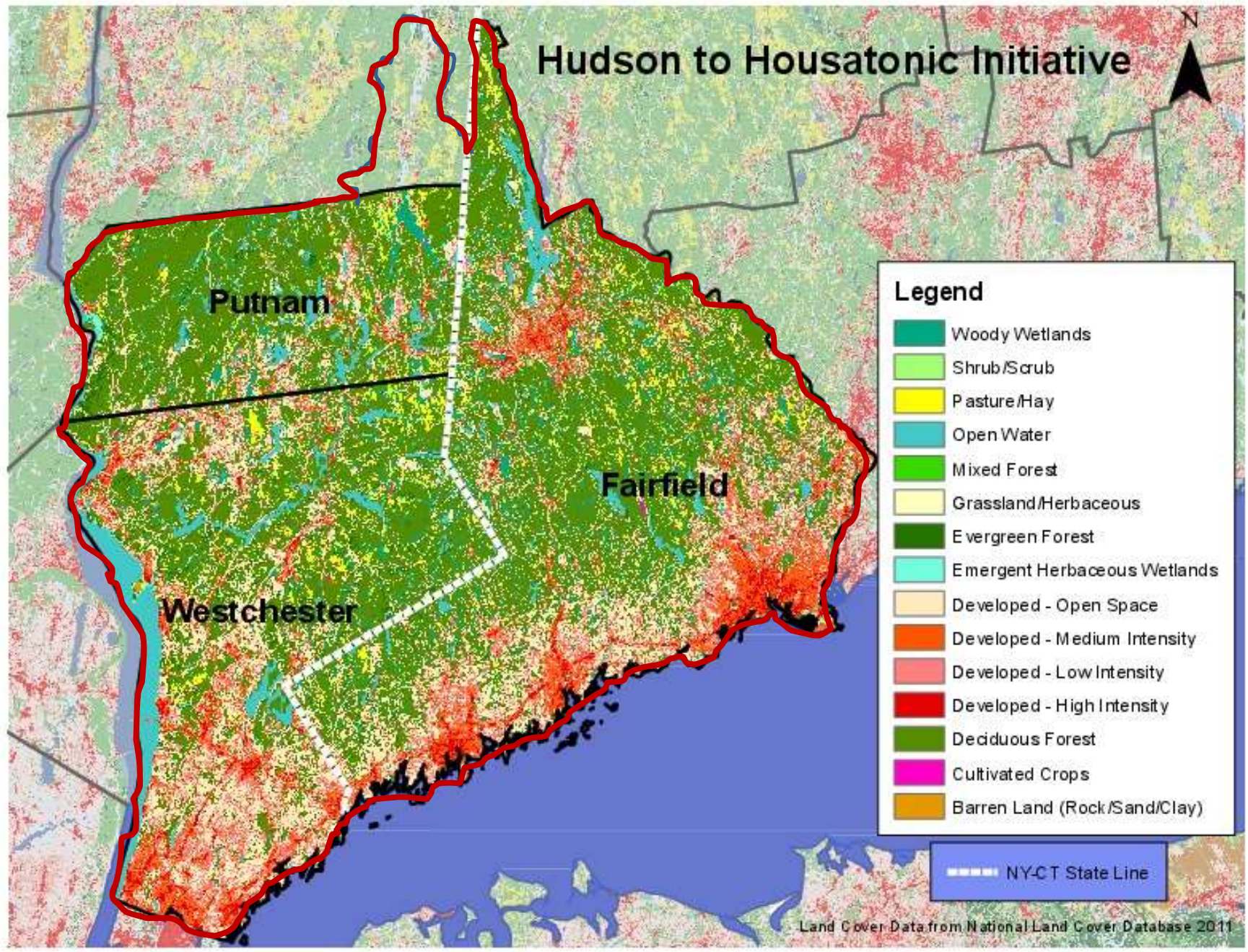


## Legend

- Woody Wetlands
- Shrub/Scrub
- Pasture/Hay
- Open Water
- Mixed Forest
- Grassland/Herbaceous
- Evergreen Forest
- Emergent Herbaceous Wetlands
- Developed - Open Space
- Developed - Medium Intensity
- Developed - Low Intensity
- Developed - High Intensity
- Deciduous Forest
- Cultivated Crops
- Barren Land (Rock/Sand/Clay)

----- NY-CT State Line

# Hudson to Housatonic Initiative



Putnam

Fairfield

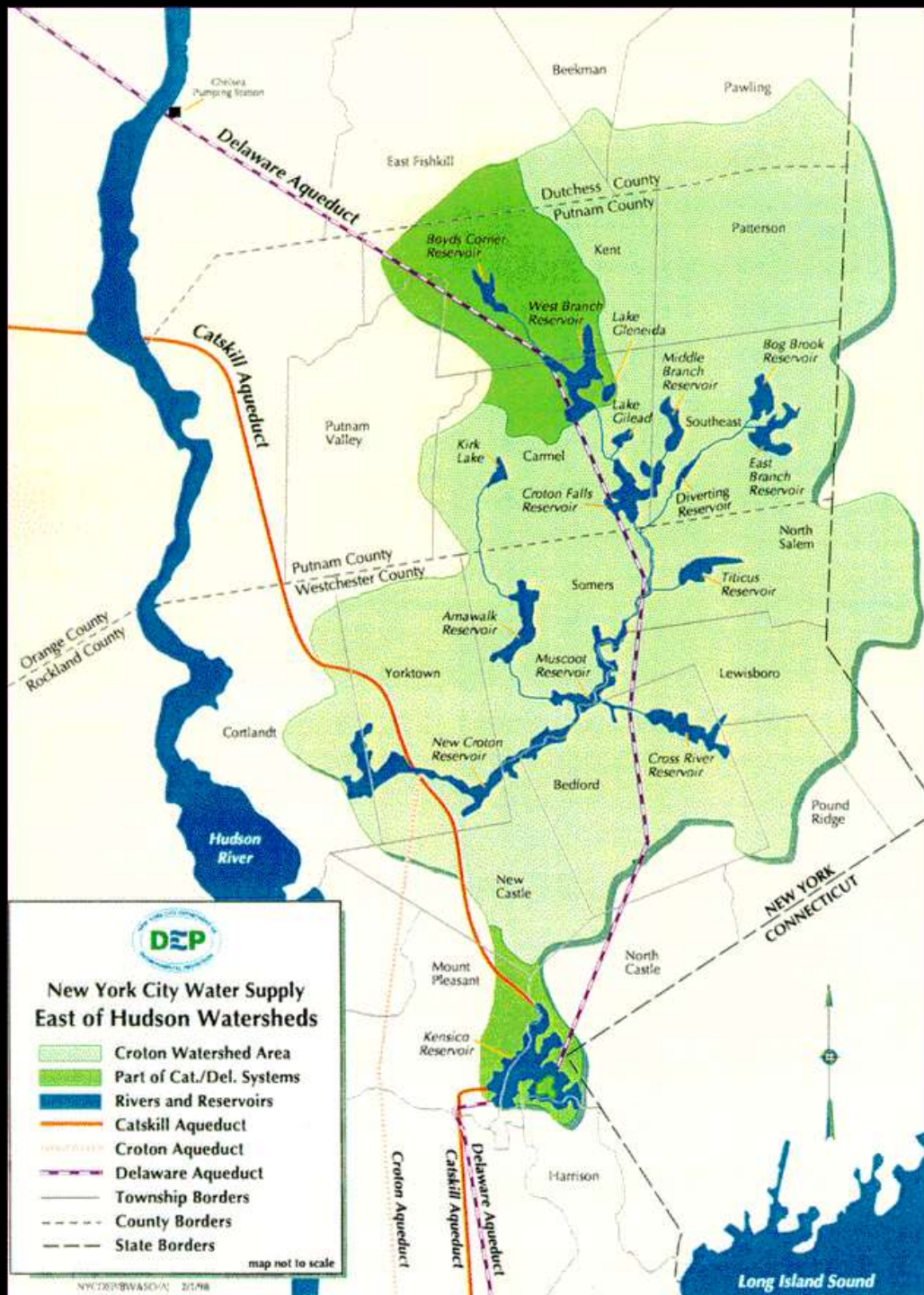
Westchester

**Legend**

- Woody Wetlands
- Shrub/Scrub
- Pasture/Hay
- Open Water
- Mixed Forest
- Grassland/Herbaceous
- Evergreen Forest
- Emergent Herbaceous Wetlands
- Developed - Open Space
- Developed - Medium Intensity
- Developed - Low Intensity
- Developed - High Intensity
- Deciduous Forest
- Cultivated Crops
- Barren Land (Rock/Sand/Clay)

----- NY-CT State Line

Land Cover Data from National Land Cover Database 2011

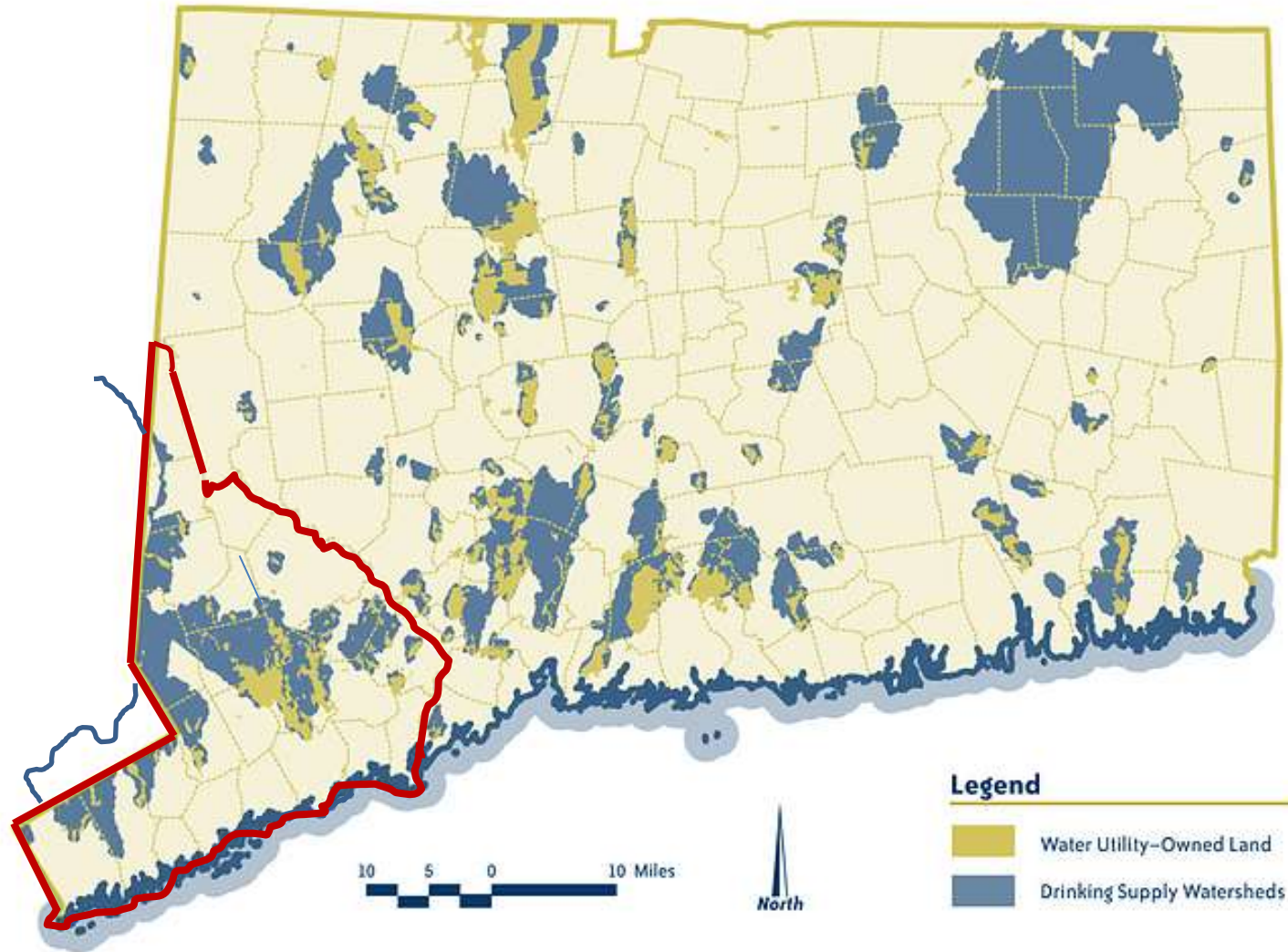


**DEP**  
 New York City Water Supply  
 East of Hudson Watersheds

- Croton Watershed Area
- Part of Cat./Del. Systems
- Rivers and Reservoirs
- Catskill Aqueduct
- Croton Aqueduct
- Delaware Aqueduct
- Township Borders
- County Borders
- Slate Borders

map not to scale

## Connecticut Drinking Supply Watersheds



Source: Trust for Public Land

<http://www.ctenvironment.org/#!/zoom/cxd2/c474>

# Lands of Above Average Resiliency to Climate Change



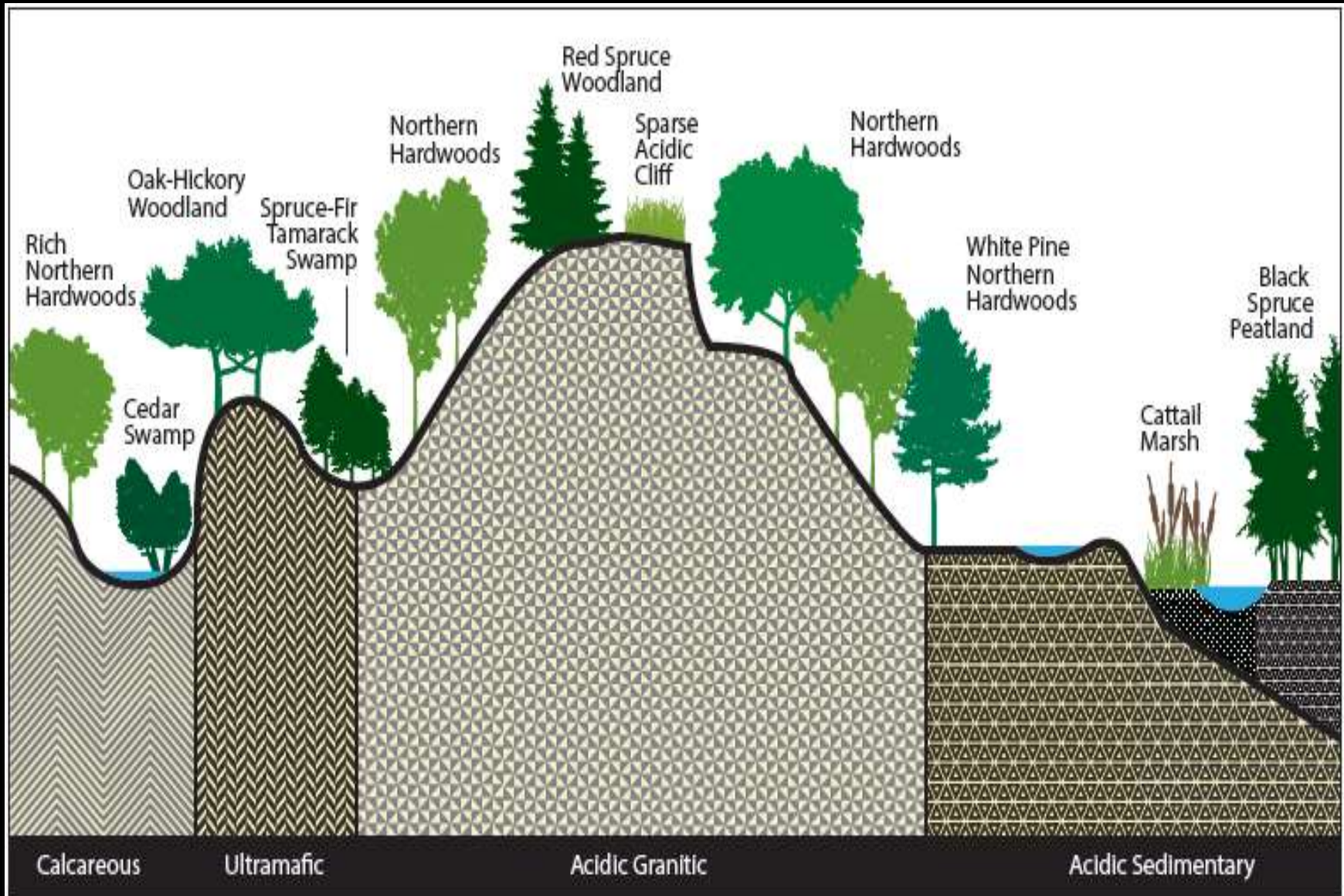
# Above Average Resilience to Climate Change

- the complexity of landforms,
- the connectivity of natural systems and
- a variety of geology types.

Source:

[http://www.osiny.org/site/PageServer?pagename=Issues\\_Resiliency\\_NE](http://www.osiny.org/site/PageServer?pagename=Issues_Resiliency_NE)

# Physical Diversity Equates to Biological Diversity



Jeffrey Jenkins (after Mark Anderson)

# Above Average Resilience to Climate Change

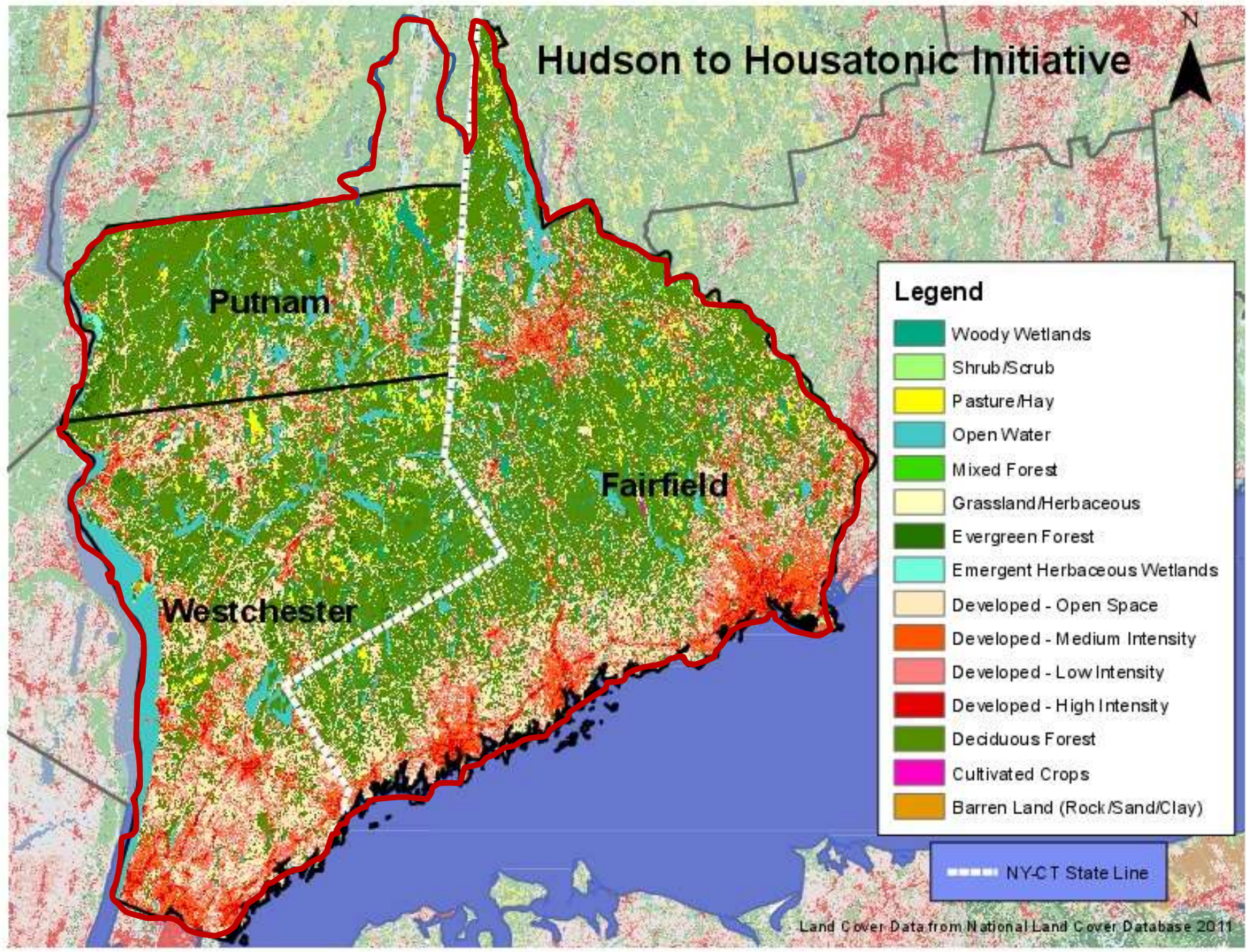
Unfragmented, natural areas with a variety of land formations such as slopes, cliffs, valleys and ravines, and different soil types.

Together, these features combine to form individual micro-climates, each one a place where different forms of life can thrive.

Source:

[http://www.osiny.org/site/PageServer?pagename=Issues\\_Resiliency\\_NE](http://www.osiny.org/site/PageServer?pagename=Issues_Resiliency_NE)

# Hudson to Housatonic Initiative



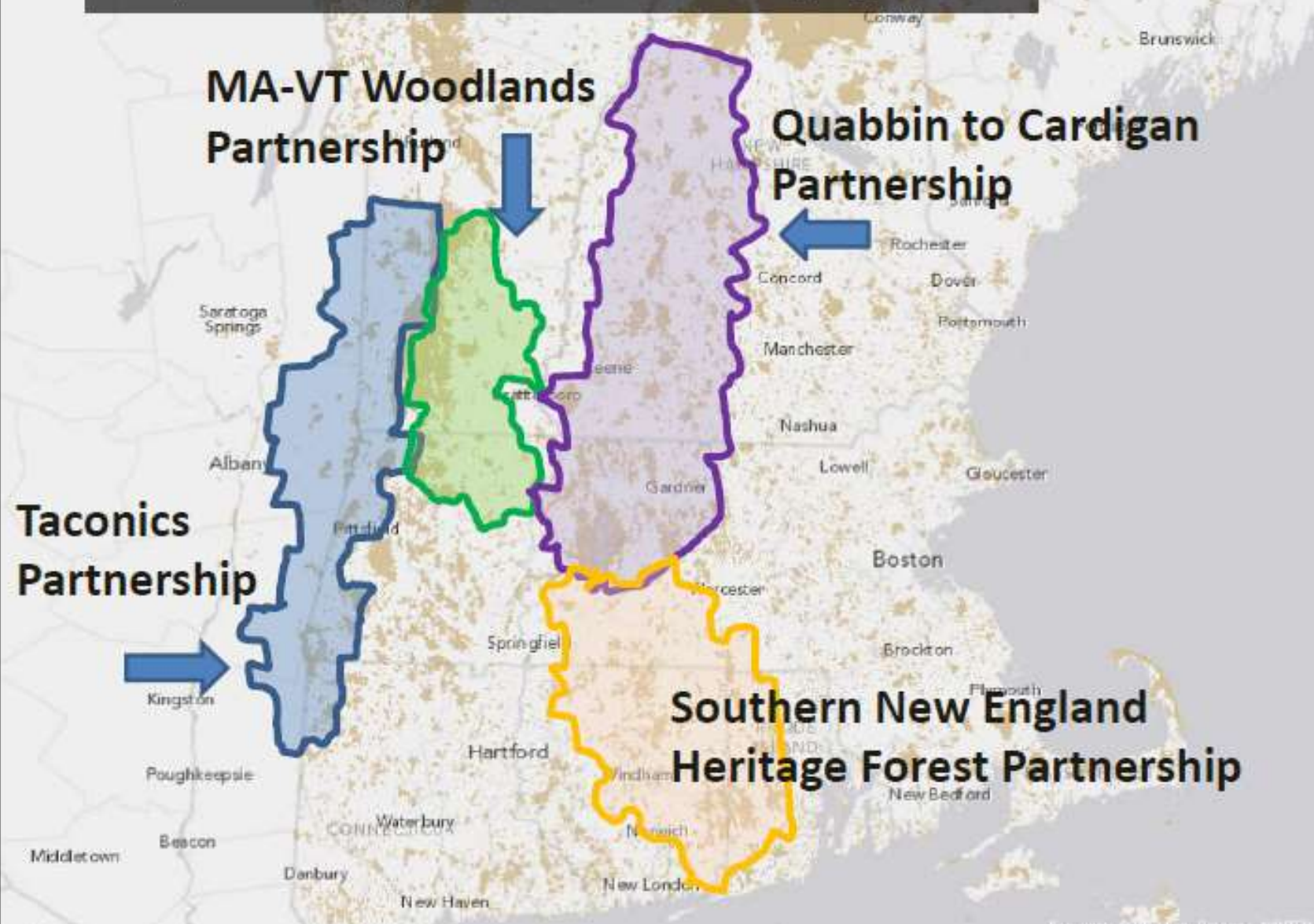
## Legend

- Woody Wetlands
- Shrub/Scrub
- Pasture/Hay
- Open Water
- Mixed Forest
- Grassland/Herbaceous
- Evergreen Forest
- Emergent Herbaceous Wetlands
- Developed - Open Space
- Developed - Medium Intensity
- Developed - Low Intensity
- Developed - High Intensity
- Deciduous Forest
- Cultivated Crops
- Barren Land (Rock/Sand/Clay)

----- NY-CT State Line

Land Cover Data from National Land Cover Database 2011

# North East State Foresters Association Regional Pilot Demonstration Project - NY/NE Family Forest Owner Engagement



Northeast Regional Pilot Demonstration Project to Strengthen Forest  
Product Markets, Forest Stewardship, and Forest Conservation -  
Task 2: New York –New England Family Forest Owner Engagement Initiative

Final Report Summary - November, 2014.

Prepared by Bill Labich, Highstead Foundation



Highstead   
Dedicated to conserving New England's natural landscapes



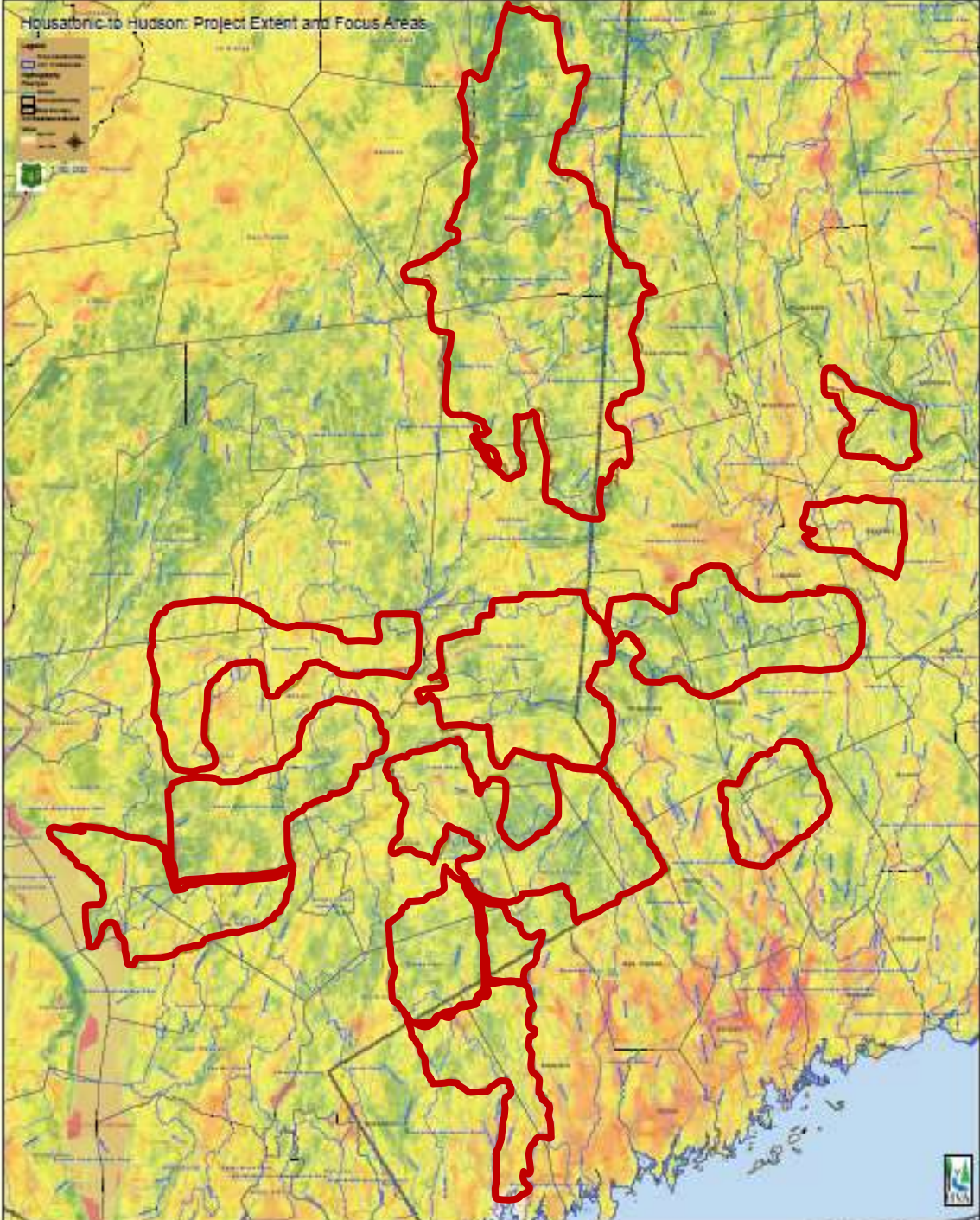
# H2H Conservation Goals

- Sustain and or enhance water resources and wildlife habitat and quality
- Adapt these resources to climate change in ways that support state open space and watershed objectives:
  - Identify key parcels for acquisition
  - Ensure that forests continue to mitigate and adapt to climate change
  - Protect high quality watershed and riparian areas

# Housatonic to Hudson: Project Extent and Focus Areas

**Legend**

- Project Extent
- Focus Area
- County Boundary
- Water
- Topography
- Scale 1:50,000



## a new outreach approach

[ Why targeted marketing makes a difference ]

## new landowner research

[ Profiles of the main types of landowners ]

## make your new plan

[ Step-by-step tool to make & save your plan ]

SEARCH

© 2009 Sustaining Family Forests Initiative

[contact us](#) • [privacy policy](#)

## Welcome to TELE

*This web site is designed to help natural resource professionals engage more family forest owners in a meaningful conversation about their woods.*

Most natural resource professionals know that one-on-one conversations with landowners are the best way to influence them. This is because we intuitively tailor our conversations to the knowledge level, values and style of our conversation partners. We mirror their language, reflect their values, and try to build on the common ground we share with them.

This site will help you do the same thing on a larger scale. It offers data and techniques to help you target your outreach activities to specific types of landowners. This will allow you to speak more meaningfully and persuasively to landowners, thus improving the outcomes of your outreach and yielding results like these:

- Of 20 people at your presentation, 15 follow up to get more information.
- You have to close outreach for the forest stewardship program three weeks early because you've already enrolled as many landowners as you can serve.
- Your latest ad campaign elicits requests for material from 1,000 landowners, most of whom have never contacted your organization before.

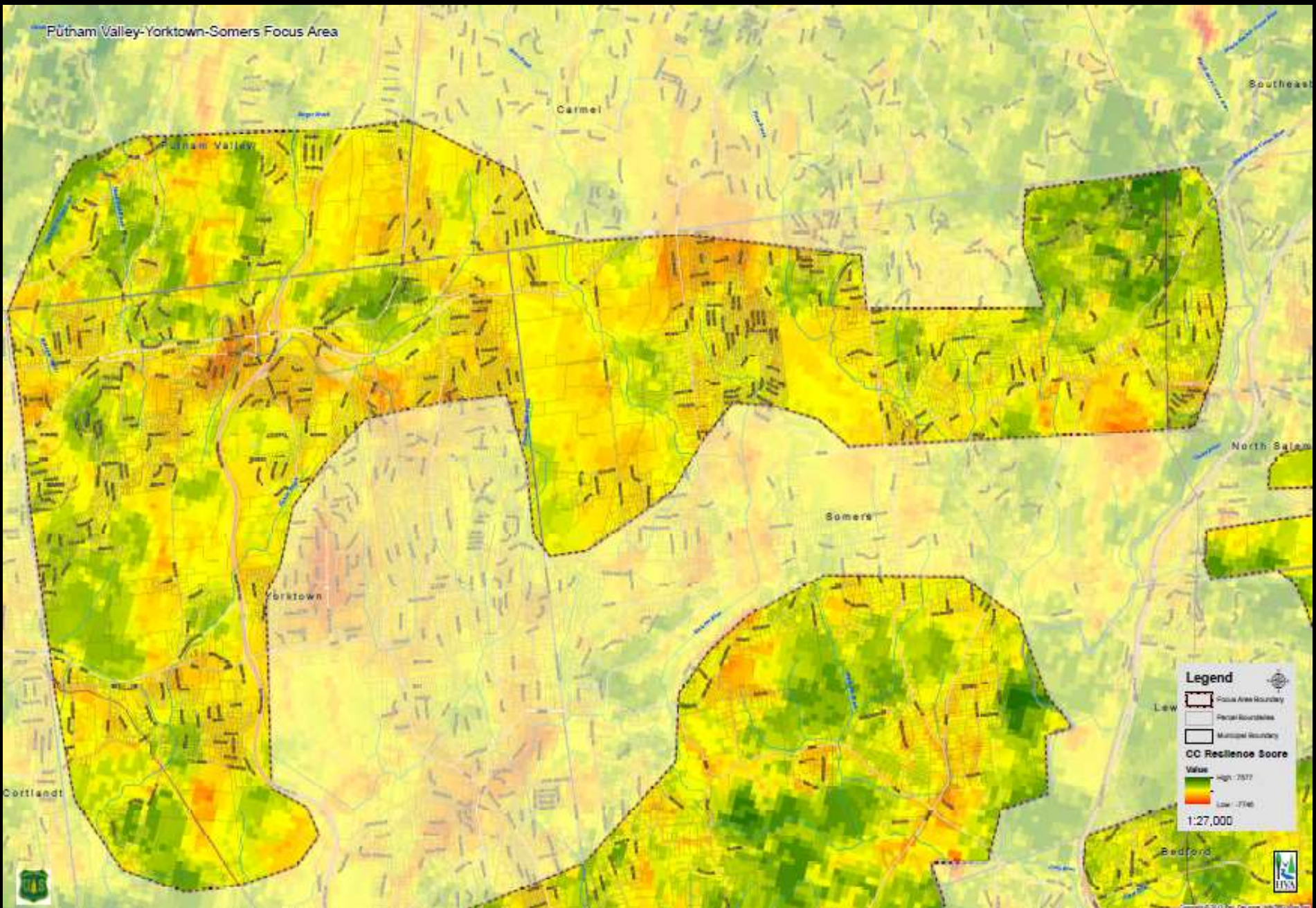
This resource has been developed by the Sustaining Family Forests Initiative (SFFI) using data from the National Woodland Owner Survey. SFFI is a collaborative of federal and state forestry and conservation agencies, businesses, and nonprofit organizations that realize private landowners play a crucial role in sustaining and nurturing our natural resources. It is coordinated by the Yale School of Forestry and Environmental Studies and the U.S. Forest Service's Family Forest Research Center.

You can use this site in many different ways, by clicking on one of the three colored boxes below:

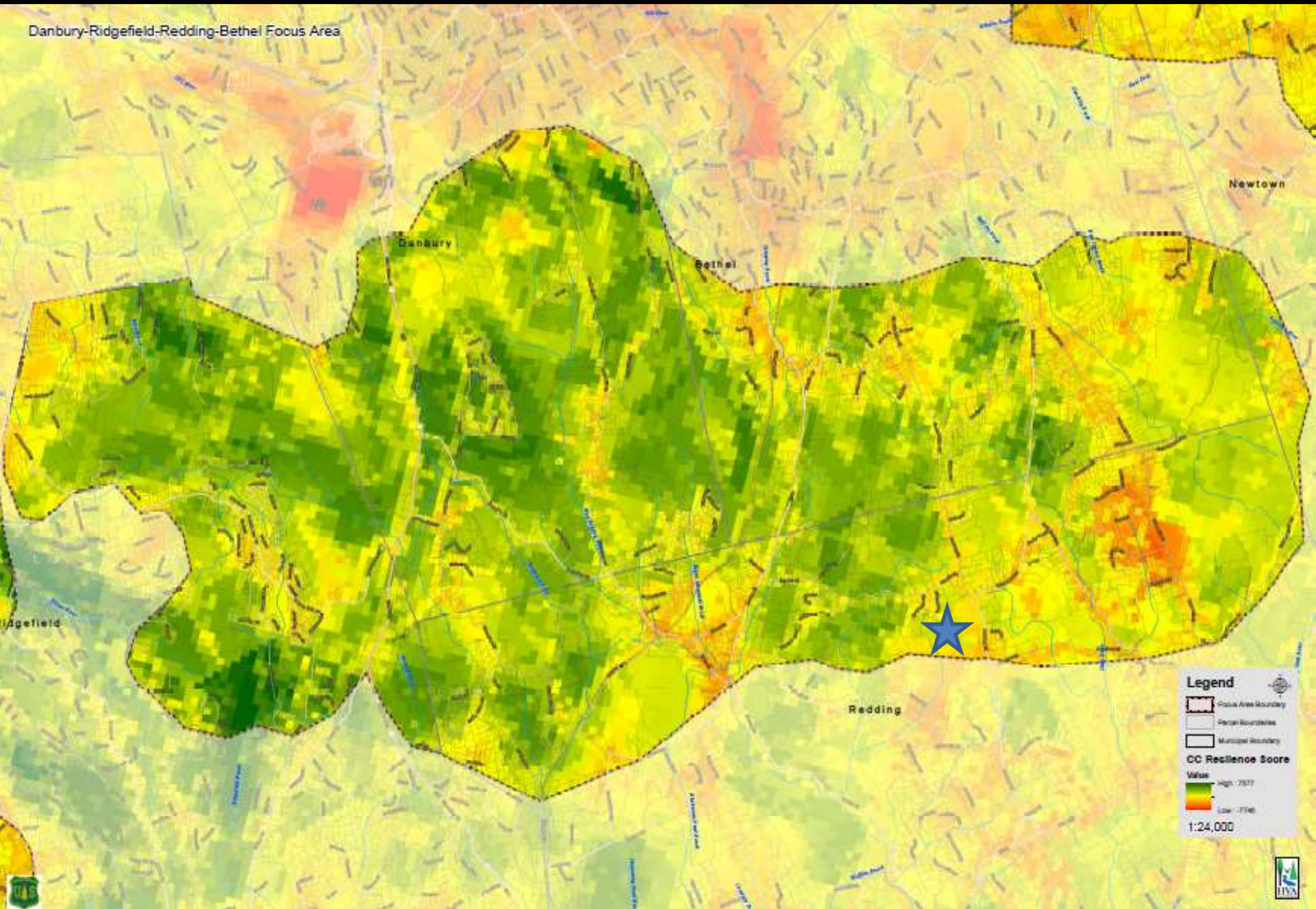


Your Land Your Legacy  
Estate Planning Event

Pūtham Valley-Yorktown-Somers Focus Area



Danbury-Ridgefield-Redding-Bethel Focus Area



Newtown

Danbury

Bethel

Redding

Ridgefield

**Legend**

- Focus Area Boundary
- Parcel Boundaries
- Municipal Boundary

**CC Resilience Score**

Value

- High: 7577
- Low: 7146

1:24,000



