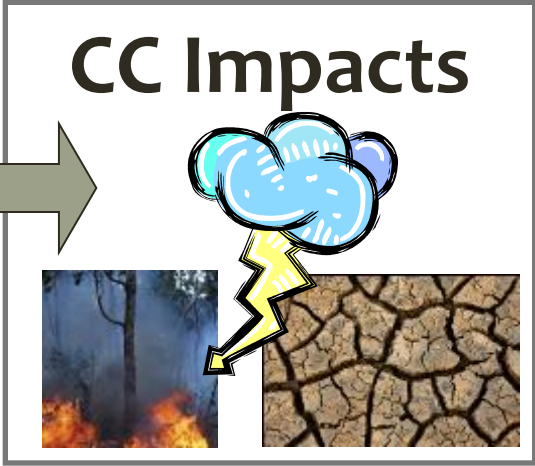
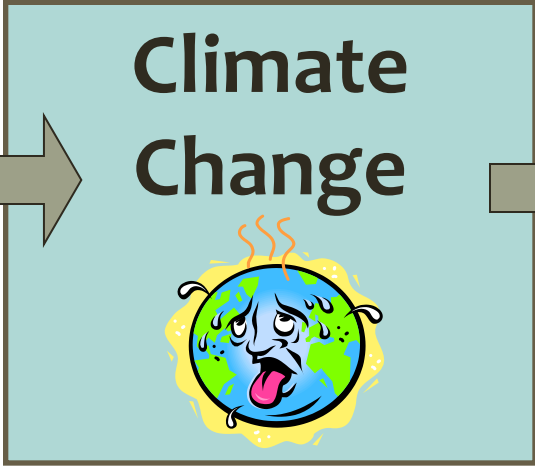
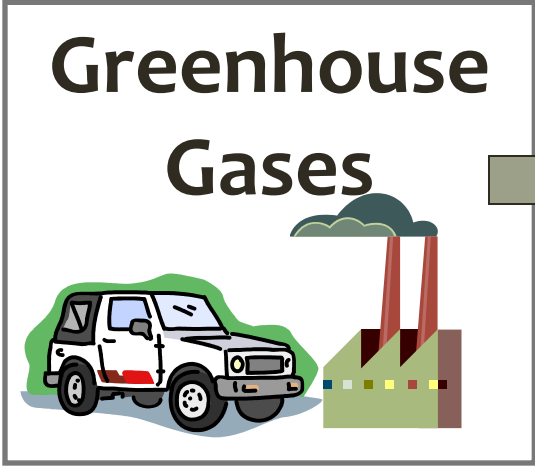


CREATING CLIMATE-INFORMED PRACTICES FOR LOCAL CONSERVATION EFFORTS



www.forestadaptation.org

ADAPTATION & MITIGATION



Mitigation

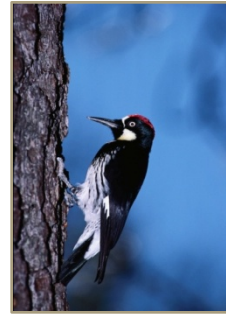
Human actions to reduce the effects of climate change by reducing sources and enhancing sinks of greenhouse gases

- 1) **Store** (sequester) carbon in live trees and in ecosystems
- 2) **Avoid** emissions of greenhouse gases to atmosphere
- 3) **Substitute** products that produce lower emissions



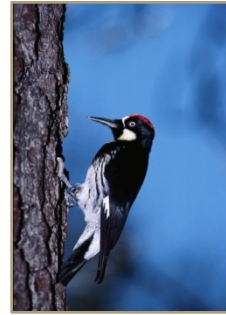
Adaptation

Adaptation is the adjustment of human or natural systems in response to climate change.



Adaptation

Adaptation is the adjustment of human or natural systems in response to climate change.



Adaptation complements mitigation by sustaining healthy, functioning ecosystems

What actions can be taken to
enhance the ability of an ecosystem
to cope with change

and

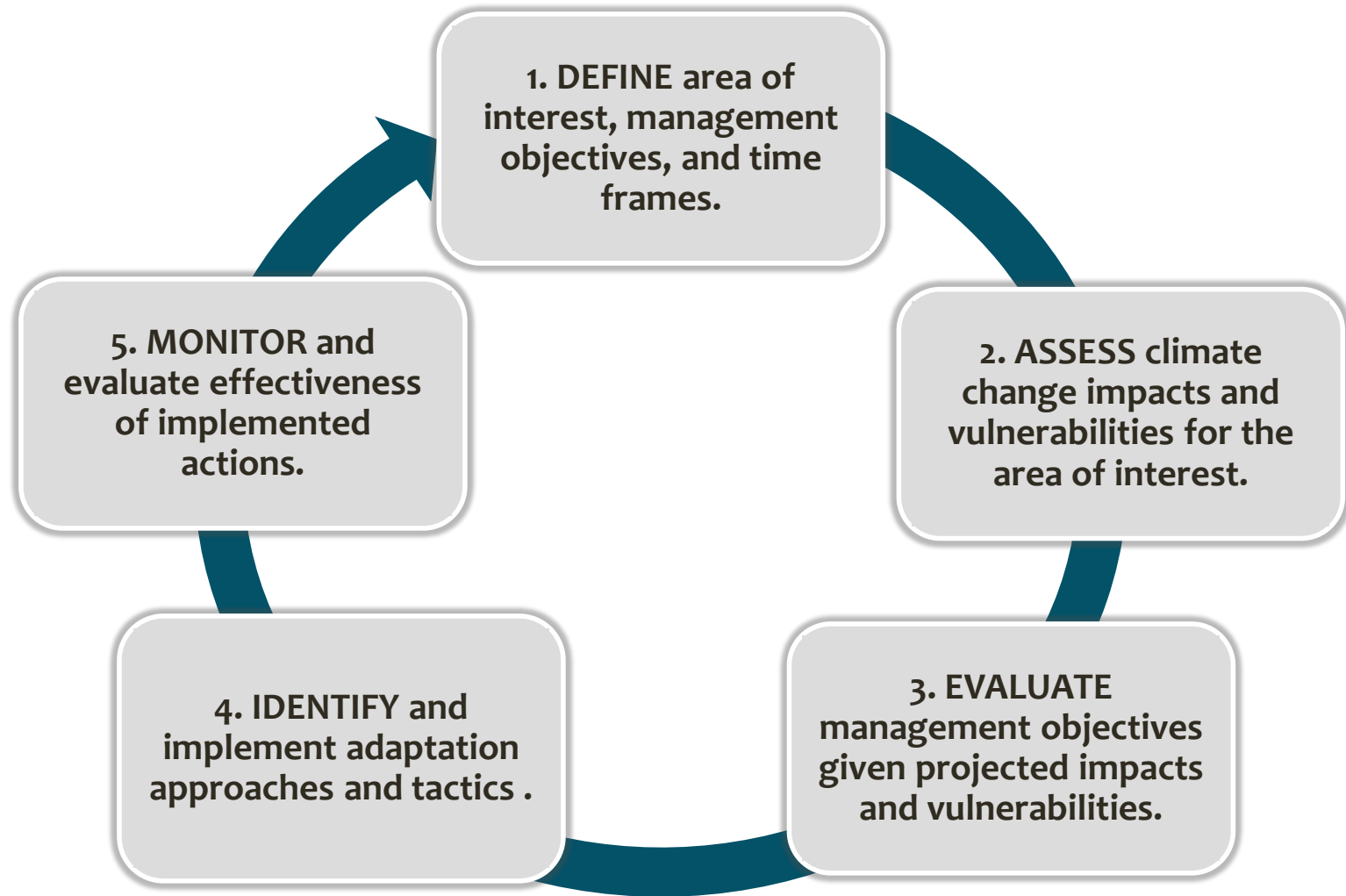
meet conservation goals and
objectives?

Adaptation Actions

Climate Change Filter = Intentionality

- Actions specifically address climate change impacts & vulnerabilities in order to meet climate-informed goals/objectives.
- Actions might be the same/similar to what you're already doing, but its necessary to explore potential modifications to address climate change.

Adaptation Process



Adaptation Process: Deciphered



Adaptation Actions



Manage for Change:

Ecosystems have fundamentally changed to something different

Manage for Persistence:

Ecosystems are still recognizable as being the same system (character)

When you might emphasize...

Persistence (Same/Similar)

- High ecological value or unique/rare condition
- High social value associated with current condition
- Inherent ability to buffer changes
- Highly vulnerable, but place represents best chance of success

Change (Future-adapted)

- High likelihood that current conditions will fail, making change is necessary
- Changes are already occurring, and can be enhanced
- Good opportunity to try something new

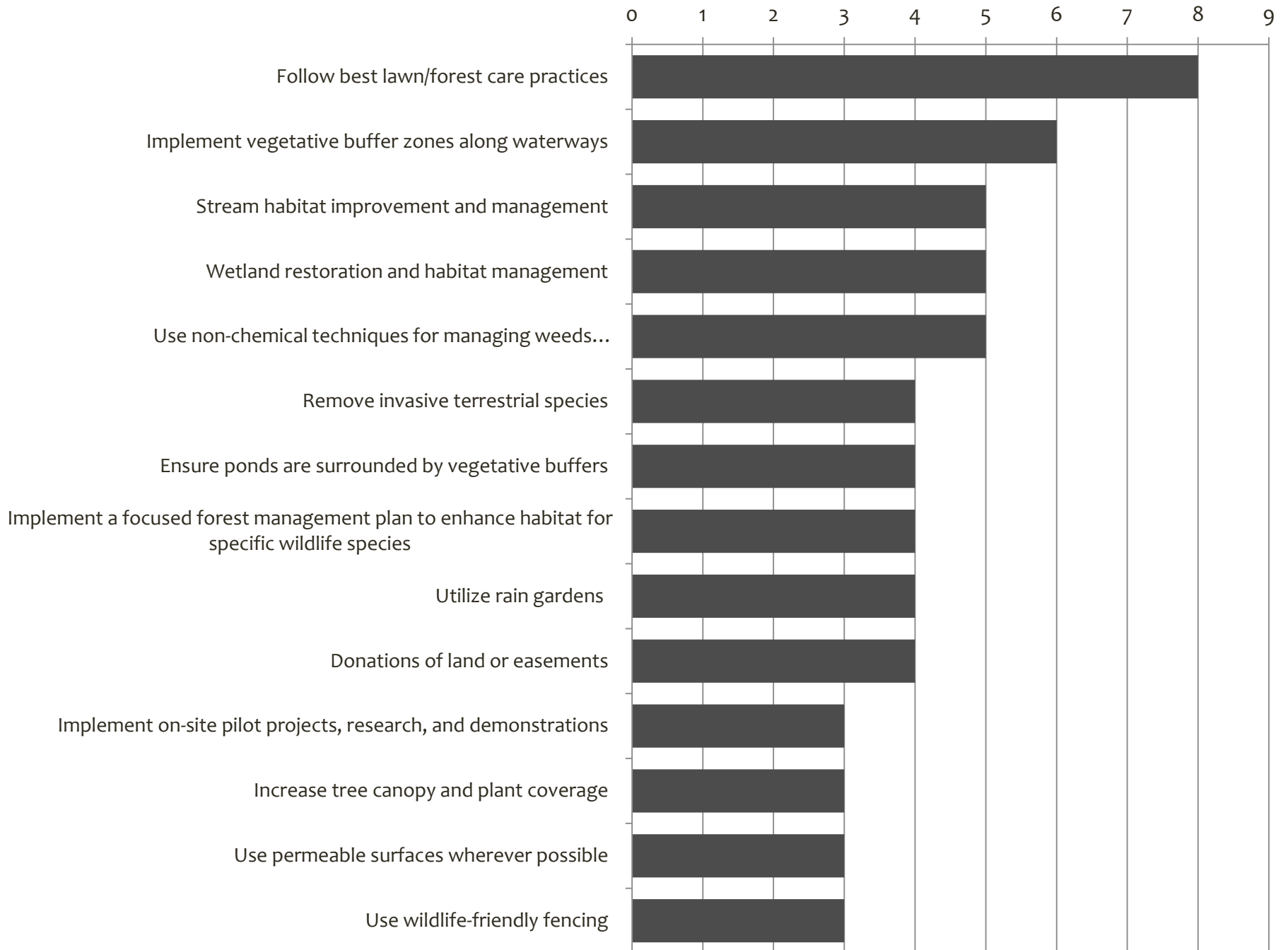
There isn't a single answer.

Each decision is unique and will vary based upon:

- **Place:** Location & Ecology
- **Purpose:** Conservation Goals & Objectives
- **People:** Values, Culture, & Resources





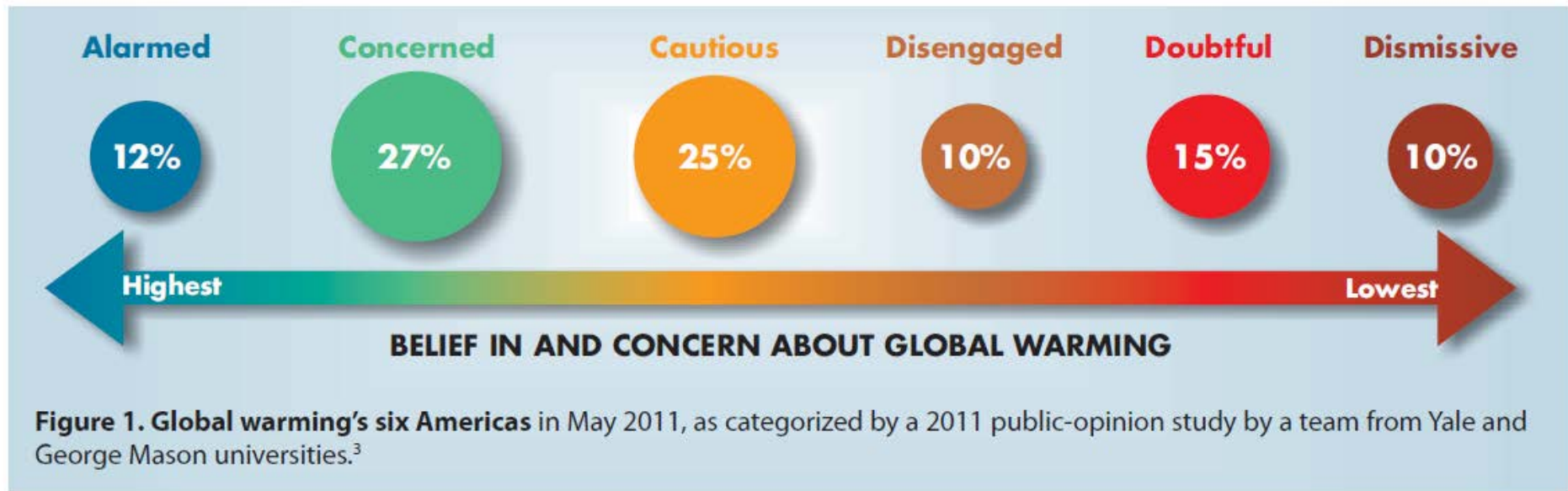


Evaluating Stewardship Practices for Local Conservation Efforts—Part 1

Focal Area _____

Stewardship Practice	What climate change impacts, challenges, or opportunities does this practice address?	What are benefits of using this practice?	What are potential drawbacks or barriers to using this practice?	Would you recommend it for additional consideration?

Climate Change Communication



Five Tips for Talking about Climate Change

- 1) Keep it Relevant to Place & Priorities
- 2) Listen to People & Their Needs
- 3) Provide Resources & Work on Solutions
- 4) Use Examples to Make it Real
- 5) Be Creative & Flexible

Let's practice...

- 1) Place
- 2) Value related to place
- 3) Stewardship practice
- 4) Environmental benefit
- 5) Environmental benefit
- 6) Benefit for climate change adaptation



1) Place

2) Value related to place

3) Stewardship practice

4) Environmental benefit

5) Environmental benefit

6) Benefit for climate change
adaptation

Here in/at 1 we care about
2. Implementing 3
helps, while also providing
4, 5, and 6.