



# Chicago Wilderness Climate Action

Co-Chairs:

Abigail Derby Lewis

Doug Stotz

Iza Redlinski



**Climate ACTION**

An Initiative of Chicago Wilderness



# Chicago Wilderness Climate Action



Chicago  
Wilderness



## **BIODIVERSITY RECOVERY PLAN**

**Climate Change Update**



# Urban Climate Action



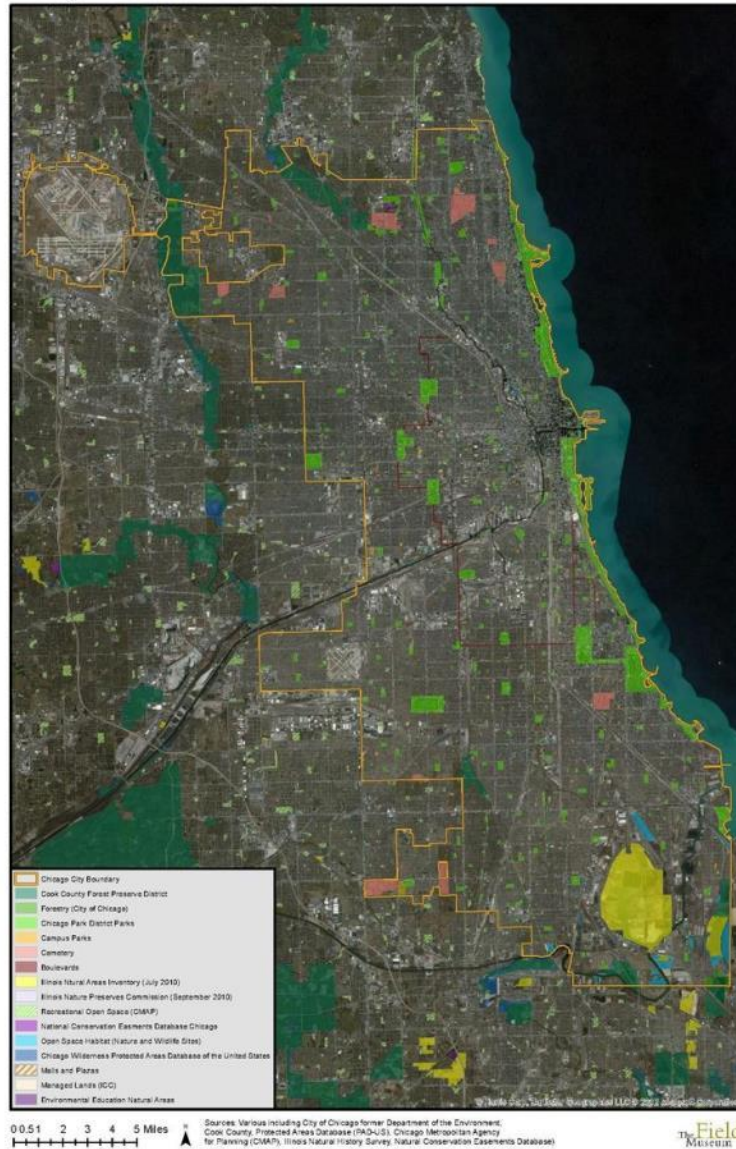
## Illinois and Wisconsin Ravines

- *identify climate impacts*
- *assess risks*
- *develop adaptation strategies*
- *implement strategies at 3 sites*



Photo by Rachel Goad, Chicago Botanic Garden

# Chicago Green Infrastructure





# Urban Climate Action



- Convened based on need expressed by resource managers
- 27 people, 15 organizations, 9 City Departments (AKA “Climate Fellows”)
- 3 Climate Clinics

The screenshot shows the homepage of the Adaptation Collaboratory. The header features the site's logo, a search bar, and user account options. A navigation menu includes links for Home, myCollab, Resources, Members, Explore, About, and Support. The main content area has a large banner image with the text "Welcome to the Collaboratory" and "Informing adaptation to climate change". Below the banner, there is a welcome message and a link to a "Collaboratory Tutorial". The footer section is divided into three columns: "RESOURCES" with a search bar and popular tags; "WHAT'S NEW IN RESOURCES" with a list of recent articles and webinars; and "GET INVOLVED" with options to upload content, form working groups, take a poll, give feedback, and contact the site.



# Urban Climate Action

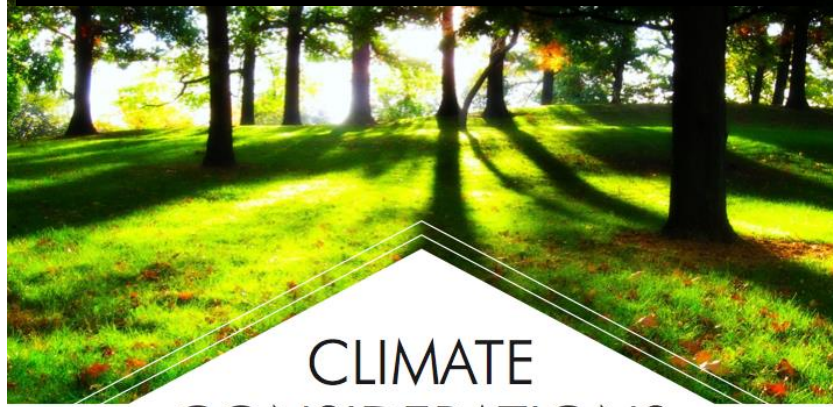


## Identifying climate-sensitive decisions

What planning and management actions could reduce a site's vulnerability to specific climate-related impacts?

- Drought and heat stress
- Extreme storms (e.g., precipitation flashiness and flooding)
- Loss of key functional system or species

<https://adapt.nd.edu/resources/1019>



# CLIMATE CONSIDERATIONS

*for* **MANAGEMENT of NATURAL  
AREAS and GREEN SPACES in the  
CITY of CHICAGO**





# Urban Climate Action



## **Summer 2013: 4 undergrad interns, 6 pilot sites**

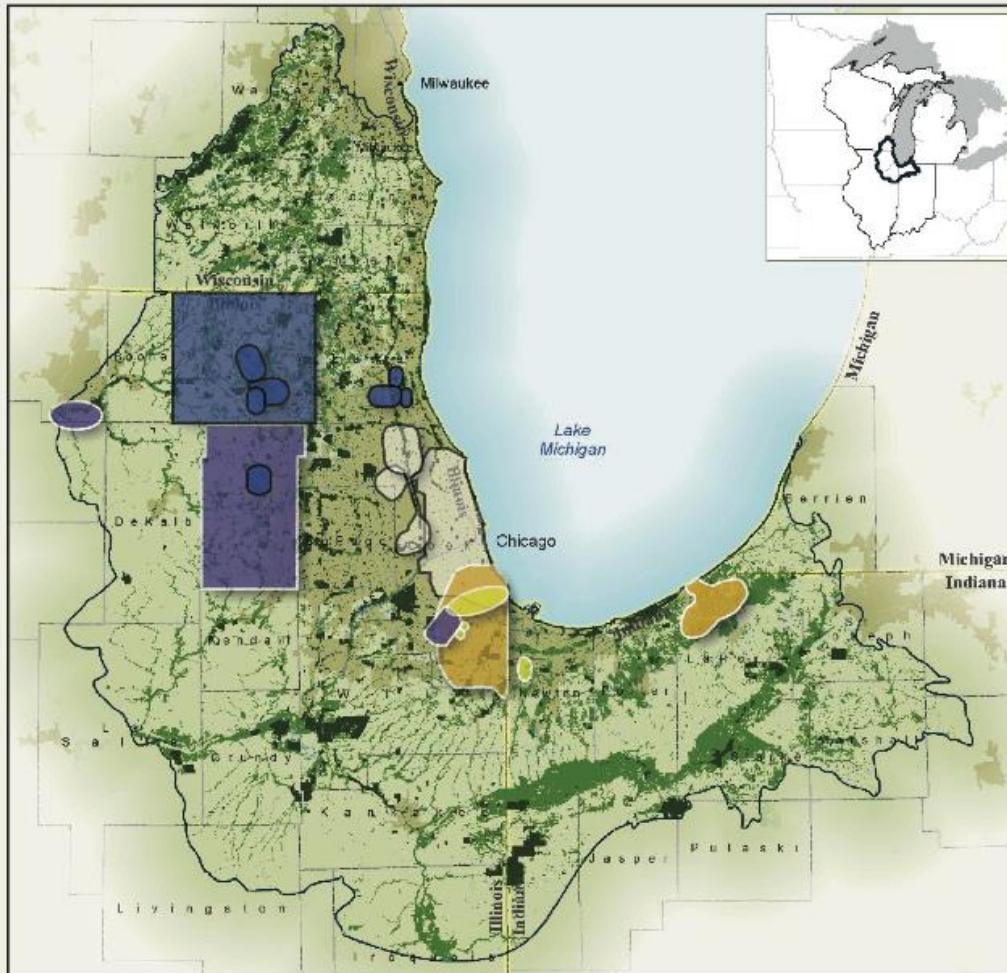
### Urban Developed Sites:

- The Field Museum (C. O'Brien, R. Collings)
- Chicago Park District, 31<sup>st</sup> Street Beach (B. Daley)
- Loyola University, Lakefront Campus (A. Durnbaugh)

### Urban Natural Areas:

- Loyola University, Retreat & Ecology Campus (A. Durnbaugh)
- Cook County Forest Preserve, Eggers Woods (C. O'Leary)
- The Nature Conservancy, Indian Boundary Prairies (J. Walk)

# Greening Infrastructure 2008 - 2013



## Completed Projects

- McHenry County GI Plan
  - Illinois American Planning Association's - 2012 "Best Strategic Plan"
  - County Planning staff working with communities on GI grant funding
- Village of Bannockburn, Lincolnshire, Mettawa GI Plan
- City of Crystal Lake GI Plan
  - City staff member designated as GI plan implementation lead
  - City comprehensive plan recognizes fen value and impact beyond boundaries
- Village of Campton Hills GI Plan
  - Comprehensive plan finalized with GI mapping/planning as organizing principle
- City of Woodstock GI Plan
  - Complements and expands on Woodstock Environmental Plan
- Village of Lakewood GI Plan
  - Mapping will be used for grant applications

## Completing end of June 2013

- Kane County GI Plan
  - Interest for GI mapping expressed by Aurora
  - Oak remnant mapping shows target communities
- Kishwaukee Corridor GI Planning
  - Prompted discussion of improved county stormwater ordinances
  - Meetings with Economic Development community/business interests
- Midlothian Creek GI Plan
  - Blue Island, Midlothian submit IEPA grants with GI mapping
  - "Opportunity Areas" projects will be submitted for Millennium Reserve projects

## In Progress

- Millennium Reserve 36 Community GI Planning
- Michigan City/Trail Creek GI Planning

## Additional Collaborations

- South Suburban Mayors and Managers site-based GI Projects
- IDNR/SSMMA Calumet Corridor GI Planning
- Northwestern Indiana Regional Planning Commission Cedar Lake GI Planning

## Pending

- Des Plaines River Community GI Planning
- City of Chicago GI Planning

Chicago  
Wilderness



GREENING Infrastructure

- A metro region spanning 38 counties, over 500 municipalities and more than 10 million people across parts of four states
- More than 580,000 acres of protected areas
- A potential network of 1.4 million acres of protected, restored or connected lands and waters
- More than 300 organizations protecting the lands and waters on which we depend
- More than \$14 million in federal conservation funds, leveraged to \$280 million over 17 years
- Over 500 conservation, sustainable development and environmental education projects created and funded



**Community-led Climate Action Projects**

Explore how climate action is improving residents' quality of life in four Chicago communities.



**SOUTH CHICAGO**

Youth organizations are creating a community-wide exhibit highlighting the Southeast Side's vision for a green future.



**FOREST GLEN**

Boy Scout and Girl Scout troops are engaging homeowners in water conservation and promoting climate- and nature-friendly outdoor practices.



**BRONZEVILLE**

Community organizations are promoting neighborhood growth through community gardens, healthy vegan



**PILSEN**

Community partners are transforming a vacant lot into a native garden where children can play and families



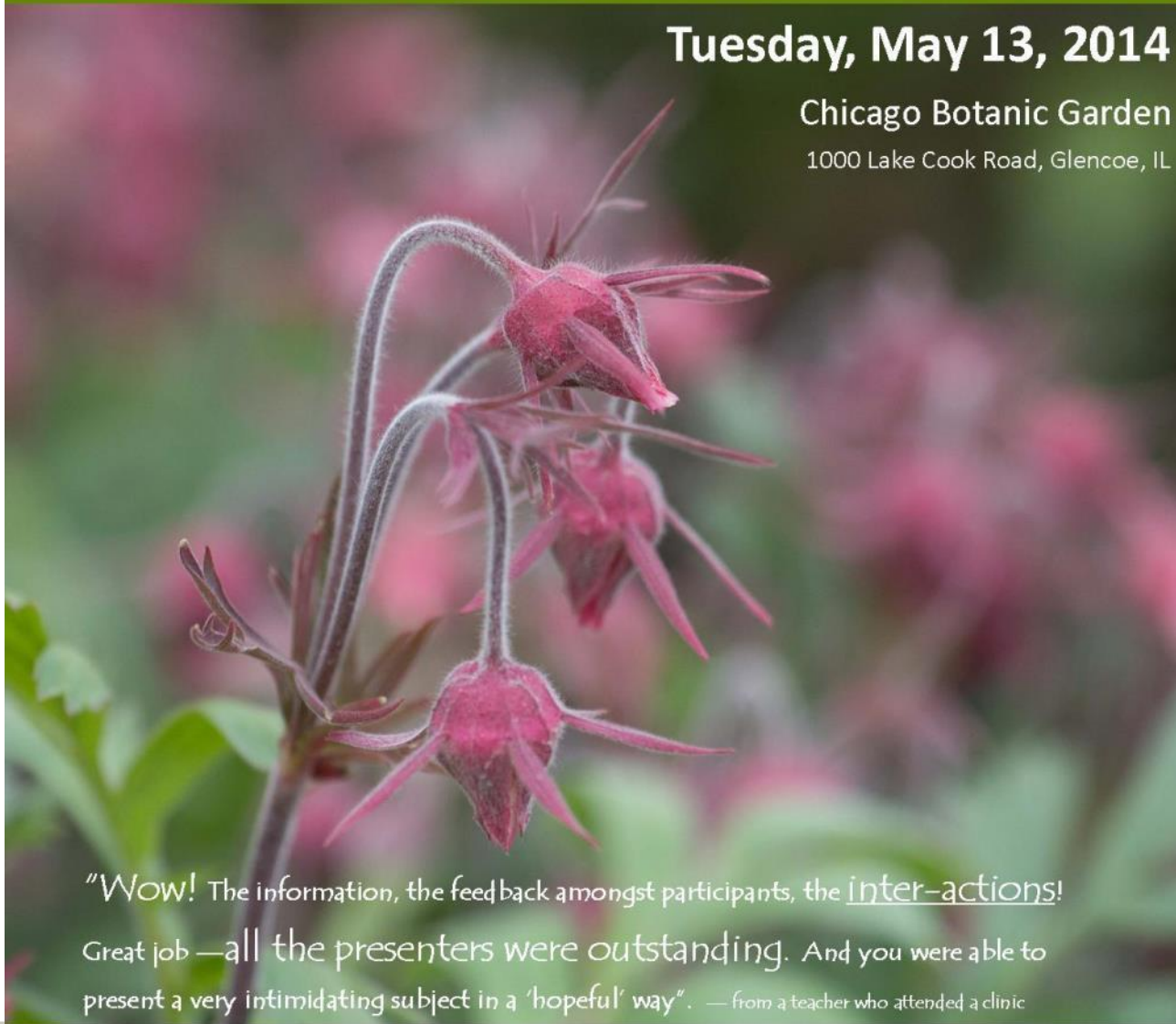
# CW climate clinic for educators

(whether you teach in a nature center, classroom or community)

**Tuesday, May 13, 2014**

Chicago Botanic Garden

1000 Lake Cook Road, Glencoe, IL



*"Wow! The information, the feedback amongst participants, the inter-actions!  
Great job—all the presenters were outstanding. And you were able to  
present a very intimidating subject in a 'hopeful' way". — from a teacher who attended a clinic*

# Chicago Wilderness

Climate Change Task Force Newsletter



 Friend on Facebook

 Follow on Twitter

 Forward to a Friend

The intention of this newsletter is to keep CW members informed about current climate change related stories, research and local events. Please send submission ideas and comments to Abigail Derby Lewis, newsletter editor, at [aderby@fieldmuseum.org](mailto:aderby@fieldmuseum.org).

## Highlighted Species

### Snowy Owl (*Bubo scandiacus*)



This winter Snowy Owls were seen in large numbers along the Atlantic Coast, from New England to Jacksonville, FL and west to the Great Lakes region.

Many in the Chicago Region were lucky enough to catch glimpses of the white giants at places such as Montrose Beach. These irruptions from Canada to the United States, which have happened at irregular intervals for centuries, are caused by adult snowy owls chasing the young owls from their territory when they reach maturity. The young owls fan



# Urban Climate Action



## Climate Change Response Framework

Home Our Approach **Projects** Demos Products Partners Resources Contact

### Projects

Use the map below to learn more about Framework projects in the region or state you are interested in. Additionally, three new Framework Projects are under development in 2014: Mid-Atlantic, New England, and Urban Forest Ecosystems. More information on these projects will be available in coming months.

	Central Appalachians
	Central Hardwoods
	Mid-Atlantic
	New England
	Northwoods
	Urban