

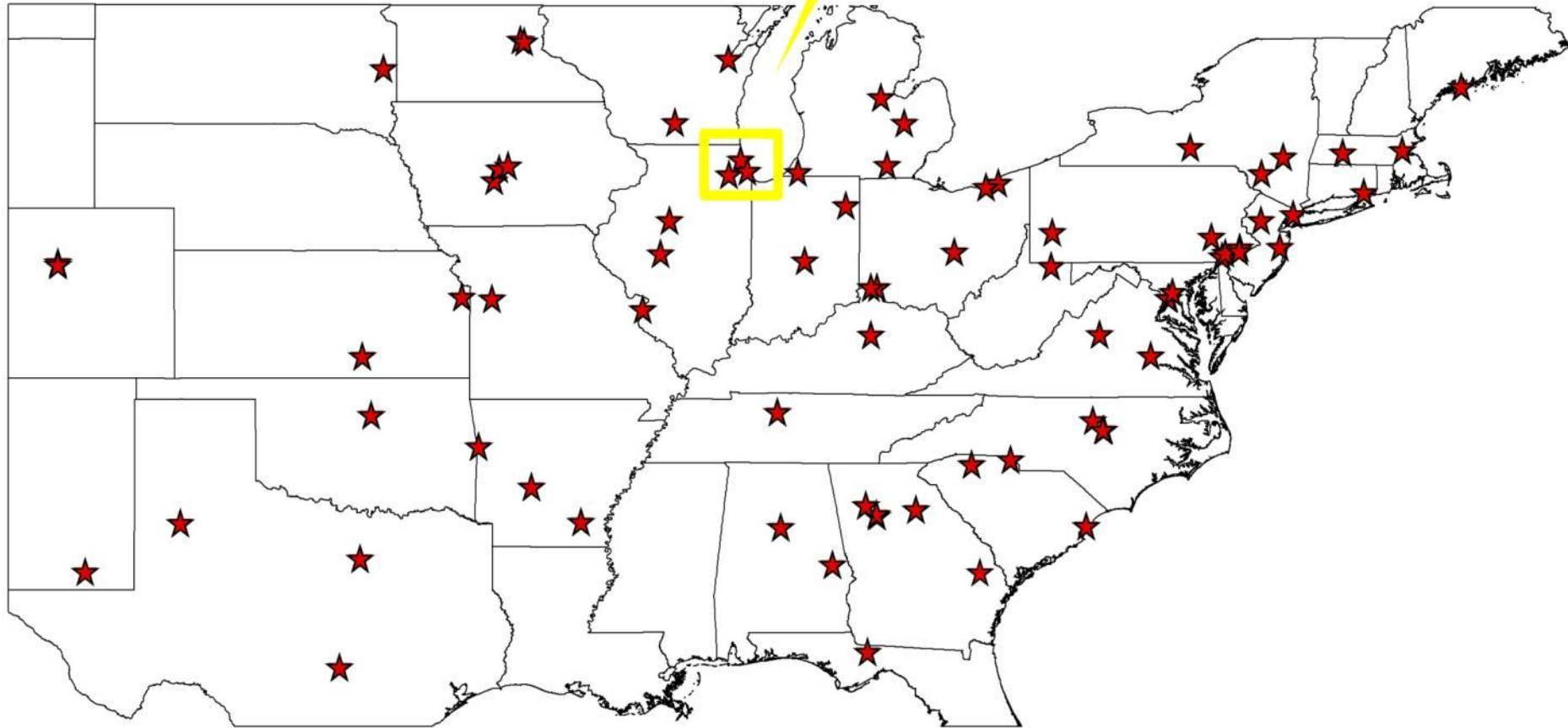
Trees 2050:
Adaptive Urban Tree List for the
Chicago Region

Andrew Bell and Shannon Still
Chicago Botanic Garden

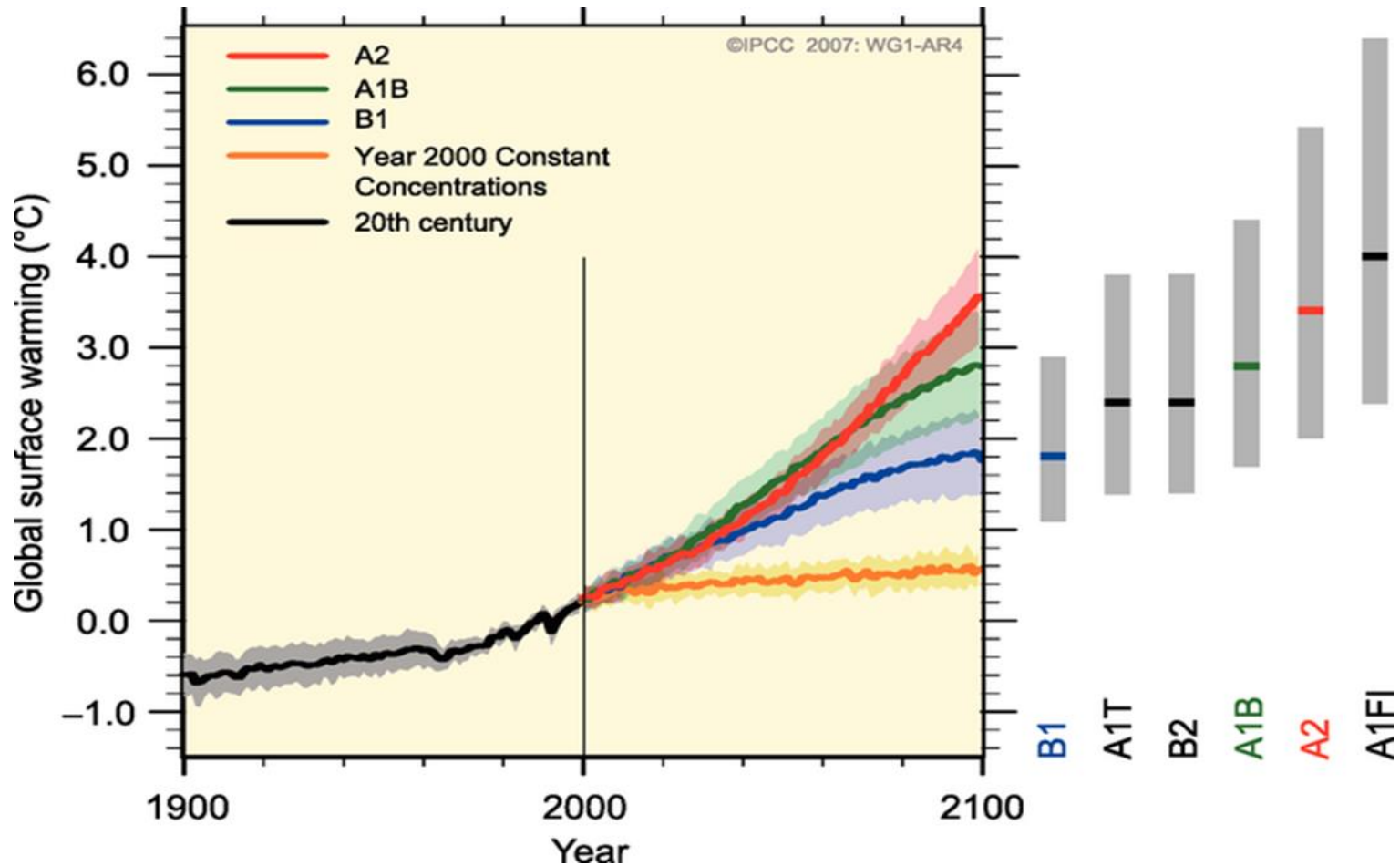
Developing an Adaptive Planting List

City of Chicago Urban Tree Planting List				Planting Site					Other					
Common Name	Scientific Name			City parkway	Sidewalk cut out	Median	Private property	Under wires	Salt tolerant	Spring planting best	Promotes Diversity	Availability	Hardiness	Ease of transplant
	Genus	Species	Cultivar											
White Fir	<i>Abies</i>	<i>concolor</i>												
Hedge Maple	<i>Acer</i>	<i>campestre</i>										AV	GD	GD
Amur maple	<i>Acer</i>	<i>ginnala</i>	'Flame'									AV	AV	AV
Miyabe Maple	<i>Acer</i>	<i>miyabei</i>										GD	GD	GD
State Street® Miyabe Maple	<i>Acer</i>	<i>miyabei</i>	'Morton'									GD	GD	GD
Black Maple	<i>Acer</i>	<i>nigrum</i>										LTD	AV	AV
Crimson king maple	<i>Acer</i>	<i>platanoides</i>	'Crimson King'									GD	GD	GD
Deborah Norway maple	<i>Acer</i>	<i>platanoides</i>	'Deborah'									GD	GD	GD
Emerald Luster maple	<i>Acer</i>	<i>platanoides</i>	'Emerald Lustre™'									GD	GD	GD
Satisfaction maple	<i>Acer</i>	<i>platanoides x truncatum</i>	'Satisfaction'									GD	GD	GD
Sycamore Maple	<i>Acer</i>	<i>pseudoplatanus</i>										NA	AV	AV
Fall Fiesta Sugar Maple	<i>Acer</i>	<i>saccharum</i>	Fall Fiesta									AV	GD	AV
Green Mountain® Sugar Maple	<i>Acer</i>	<i>saccharum</i>	'PNI 0285'									AV	AV	AV
Skinner's Cut-leaved Silver Maple	<i>Acer</i>	<i>saccharinum</i>	'Skinner'									NA	GD	GD
Silver Queen Silver Maple	<i>Acer</i>	<i>saccharinum</i>	Silver Queen									NA	GD	GD
Norwegian Sunset® Maple	<i>Acer</i>	<i>truncatum x A. platanoides</i>	'Keithsform'									LTD	GD	GD
Pacific Sunset® Maple	<i>Acer</i>	<i>truncatum x A. platanoides</i>	'Warrenred'									AV	GD	GD
Autumn Fantasy Maple	<i>Acer</i>	<i>x freemanii</i>	'Autumn Fantasy'									GD	GD	GD
Marmo Maple	<i>Acer</i>	<i>x freemanii</i>	'Marmo'									GD	GD	GD
Sienna Glen® Maple	<i>Acer</i>	<i>x freemanii</i>	'Sienna'									LTD	GD	GD
Ohio Buckeye	<i>Aesculus</i>	<i>glabra</i>										AV	GD	AV
Baumann Horsechestnut	<i>Aesculus</i>	<i>hippocastanum</i>	'Baumannii'									LTD	GD	AV
Yellow Buckeye	<i>Aesculus</i>	<i>octandra</i>										LTD	GD	AV
European Black Alder **	<i>Alnus</i>	<i>glutinosa</i>										GD	GD	GD
White Alder **	<i>Alnus</i>	<i>incana</i>										LTD	GD	GD
Apple Serviceberry	<i>Amelanchier</i>	<i>x grandiflora</i>										LTD	GD	GD
Allegheny Serviceberry	<i>Amelanchier</i>	<i>laevis</i>										LTD	GD	GD
River Birch	<i>Betula</i>	<i>nigra</i>										GD	GD	AV
Heritage River Birch	<i>Betula</i>	<i>nigra</i>	'Heritage'									GD	GD	AV
European Hornbeam	<i>Carpinus</i>	<i>betulus</i>										AV	GD	DIF
American Hornbeam	<i>Carpinus</i>	<i>caroliniana</i>										AV	GD	DIF
Bitternut Hickory	<i>Carya</i>	<i>cordiformis</i>										NA	AV-PR	DIF
Shellbark Hickory	<i>Carya</i>	<i>laciniosa</i>										NA	AV-PR	DIF
Pignut Hickory	<i>Carya</i>	<i>glabra</i>										NA	AV-PR	DIF
Mockernut Hickory	<i>Carya</i>	<i>tomentosa</i>										NA	AV-PR	DIF
Shagbark Hickory	<i>Carya</i>	<i>ovata</i>										LTD	AV	DIF
Chinese Catalpa	<i>Catalpa</i>	<i>ovata</i>										VLTD	AV	GD
Northern Catalpa	<i>Catalpa</i>	<i>speciosa</i>										GD	GD	GD
Sugarberry	<i>Celtis</i>	<i>laevigata</i>										AV	AV	GD
Chicagoland Hackberry	<i>Celtis</i>	<i>occidentalis</i>	'Chicagoland'									LTD	GD	GD
Hackberry	<i>Celtis</i>	<i>occidentalis</i>										GD	GD	GD
Windy City Hackberry	<i>Celtis</i>	<i>occidentalis</i>	'Windy City'									LTD	GD	GD
Katsuratre	<i>Cercidiphyllum</i>	<i>japonicum</i>										GD	GD	DIF
Eastern Redbud	<i>Cercis</i>	<i>canadensis</i>										GD	AV	AV

Study Area: Cook County, IL
and 6 Adjacent Counties

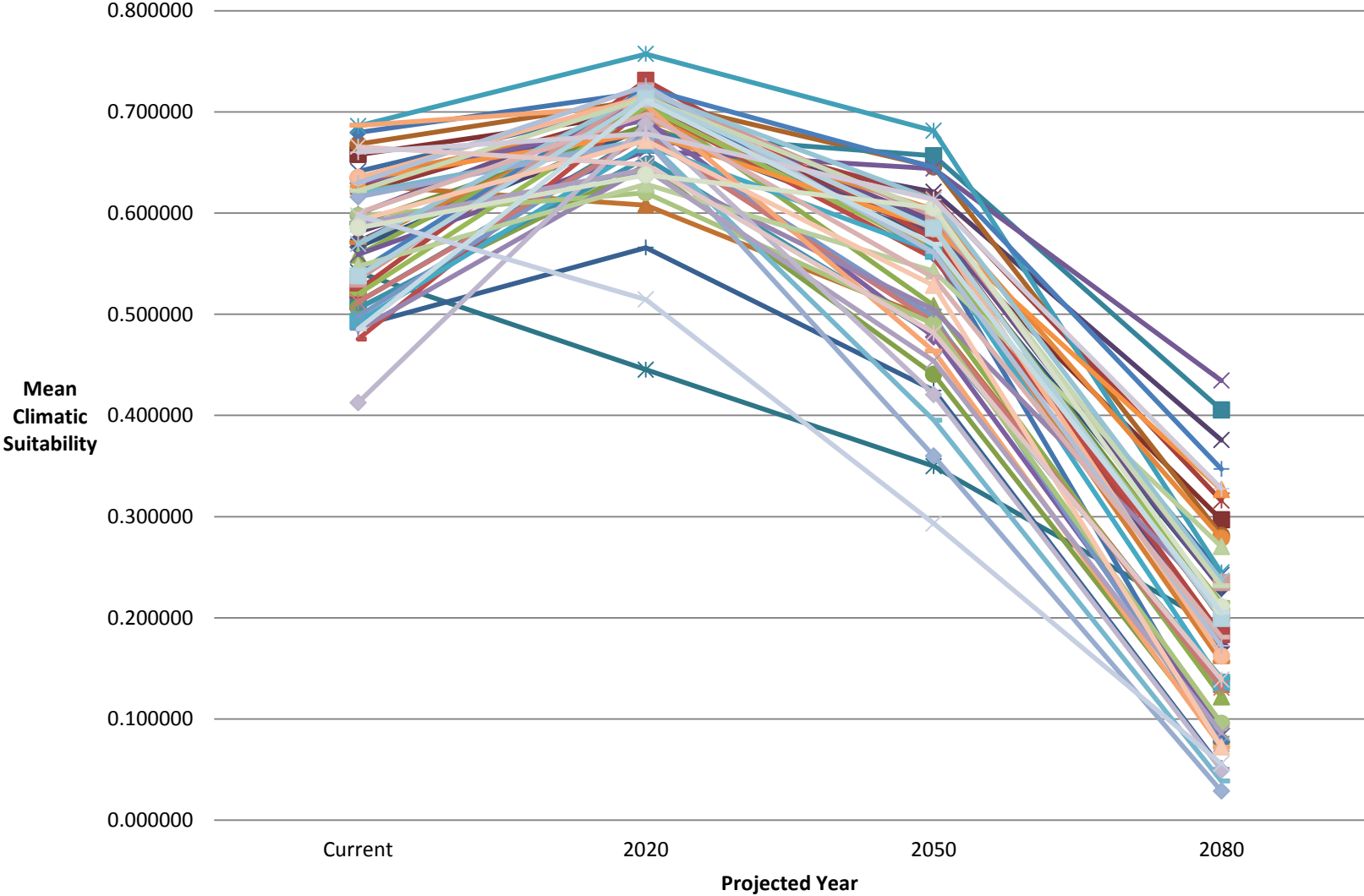


★ Data Points Collected from Public Gardens



Multi-model averages and assessed ranges for Surface Warming under A2 High Emissions Climate Scenario (IPCC Fourth Assessment Report: Climate Change 2007).

Projected Habitat Suitability for 50 Taxa Across 7 Counties Surrounding Chicago, IL



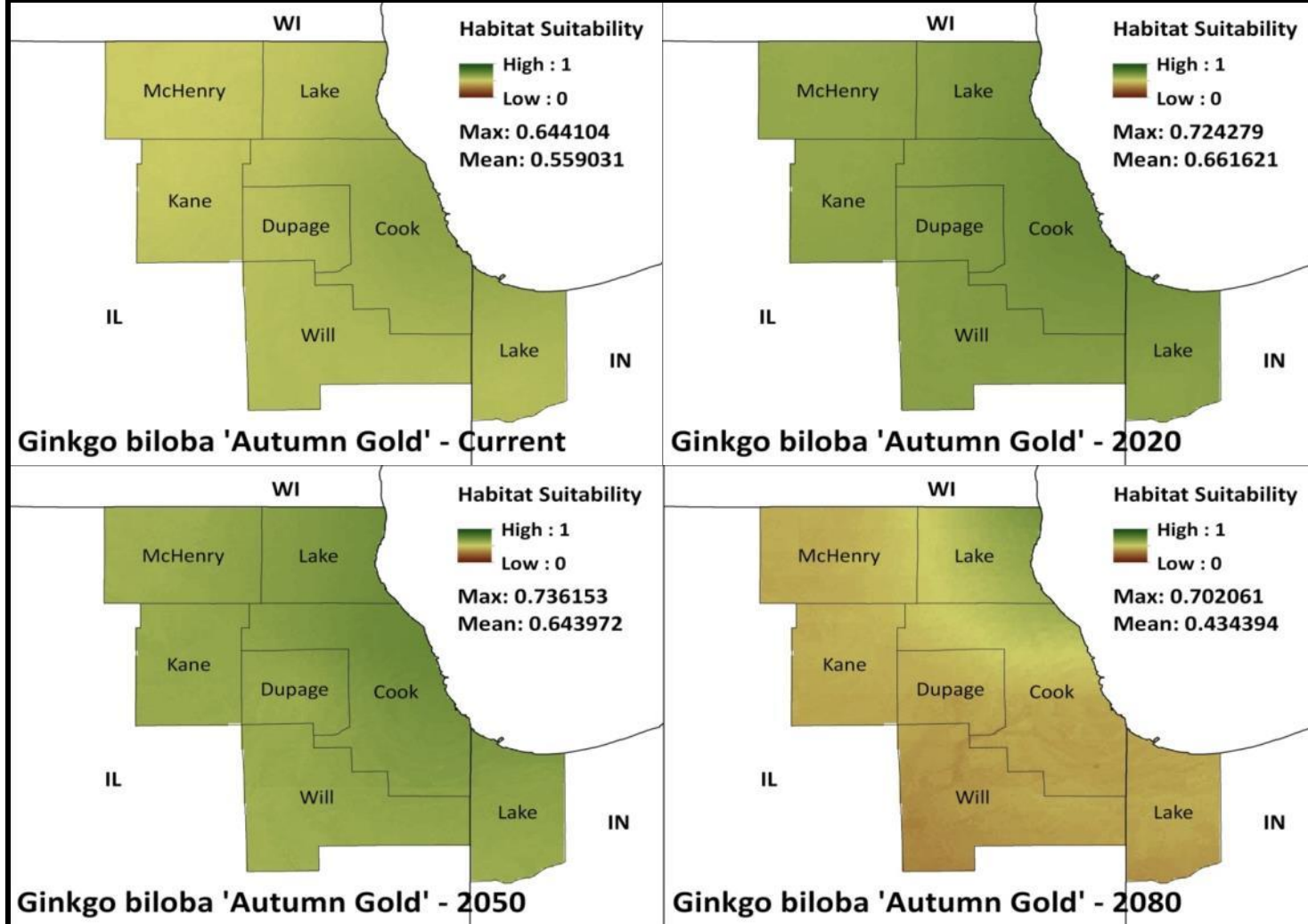


Fig. 5: *Ginkgo biloba* 'Autumn Gold' projections made with MaxEnt Species Distribution Modeling under A2 High Emissions Climate Scenario.

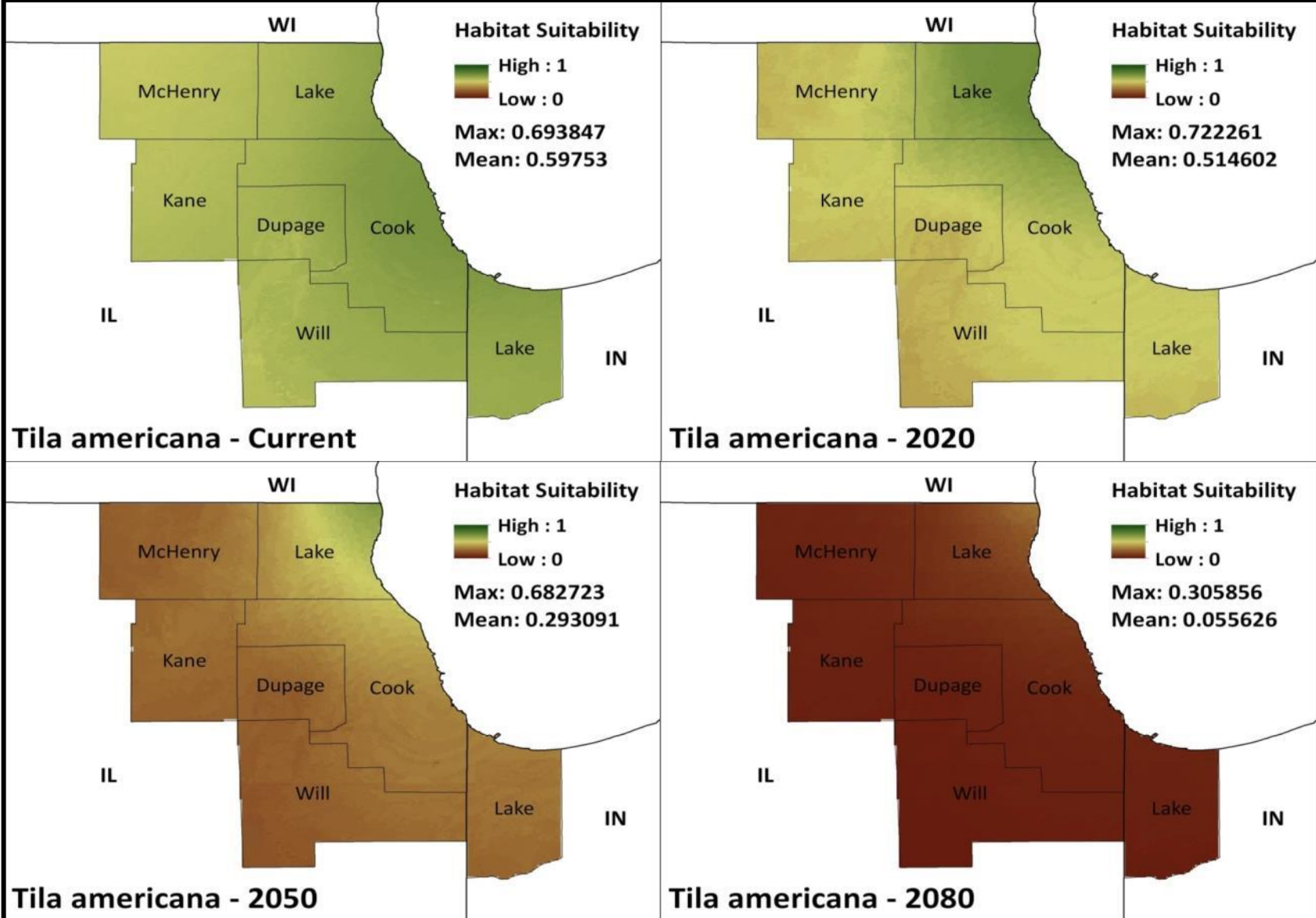


Fig. 4: *Tilia americana* projections made with MaxEnt Species Distribution Modeling under A2 High Emissions Climate Scenario.



CHICAGO BOTANIC GARDEN

 Search

- Enjoy Your Visit
- At the Garden
- Your Garden
- Education
- Conservation
- Support Us
- Our Vision



Plant Information

- Frequently Asked Questions
- Gardening Tips & Techniques
- Fact Sheets
- Conservation Topics
- Gardening Publications
- Plant Finder
- Invasive Plants
- Monthly Gardening Checklists
- Pests and Problems
- Plant Evaluation Notes
- Plant Profiles
- Plant Introductions from Chicagoland Grows
- Plant Information Links
- Plant Trials Articles
- Urban Forest Adaptive Planting
- Smart Gardener

Trees for 2050

Many of the trees common to Chicago's urban forests will adapt to a steadily warming climate through 2050, according to a recent study led by Dr. Andrew Bell, curator of woody plants.

Bell and his team analyzed 50 trees in the Garden collection and found that 40 would continue to thrive under worst-case warming scenarios through mid-century.

The trees were evaluated for their performance in three types of urban uses, sidewalk plantings, parks and residential settings, and public gardens and other "legacy" sites. Planting recommendations are presented in this interactive database. Our GPS-enabled [GardenGuide App](#) can direct visitors to trees on the Adaptive Planting List.

Note: The inclusion of trademarked plants in this study does not imply endorsement by the Chicago Botanic Garden, nor criticism of others not included.

For more information:
[Trees for 2050 \(Blog post\)](#)
[Tree Climate Maps](#)

