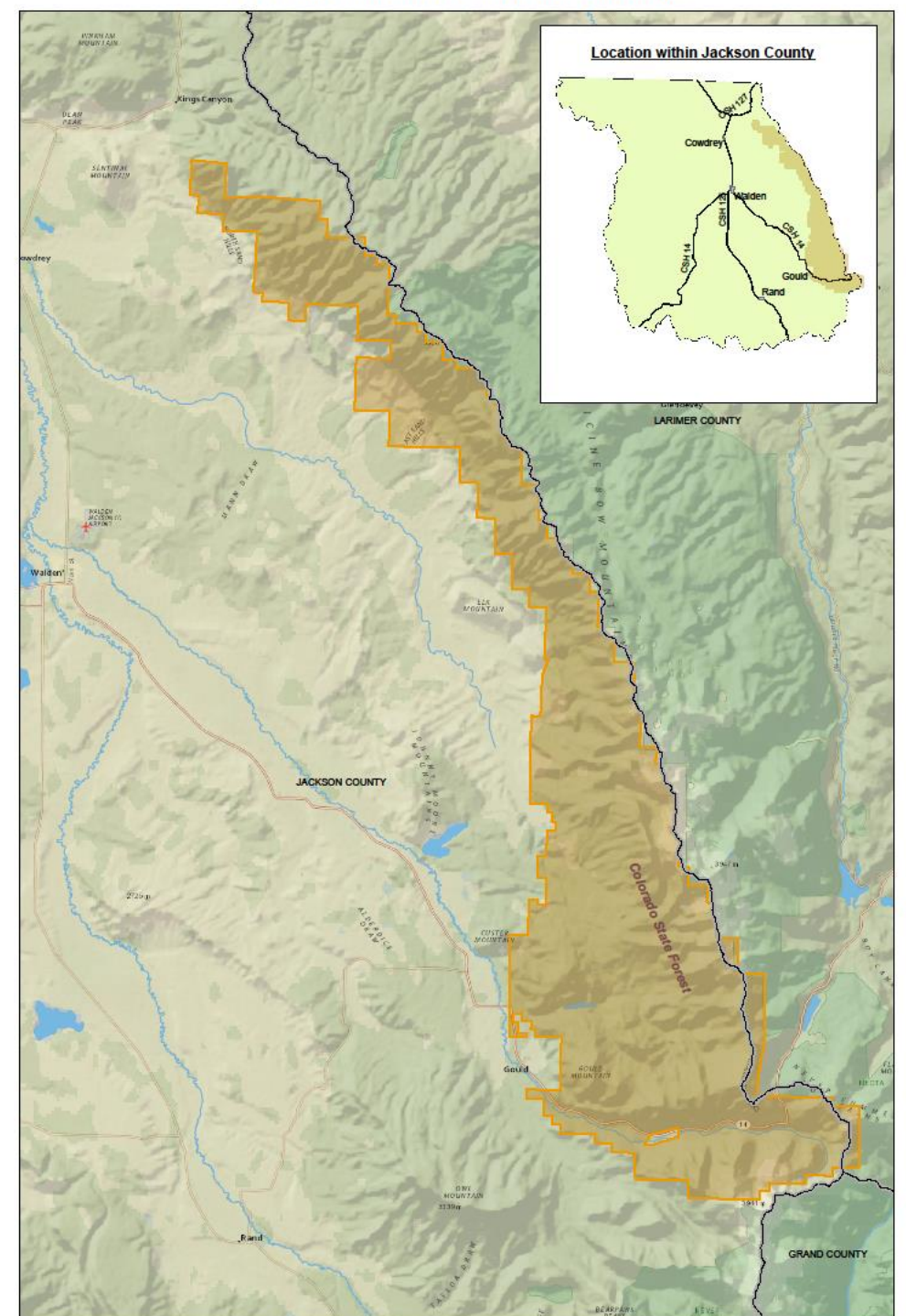


Colorado State Forest



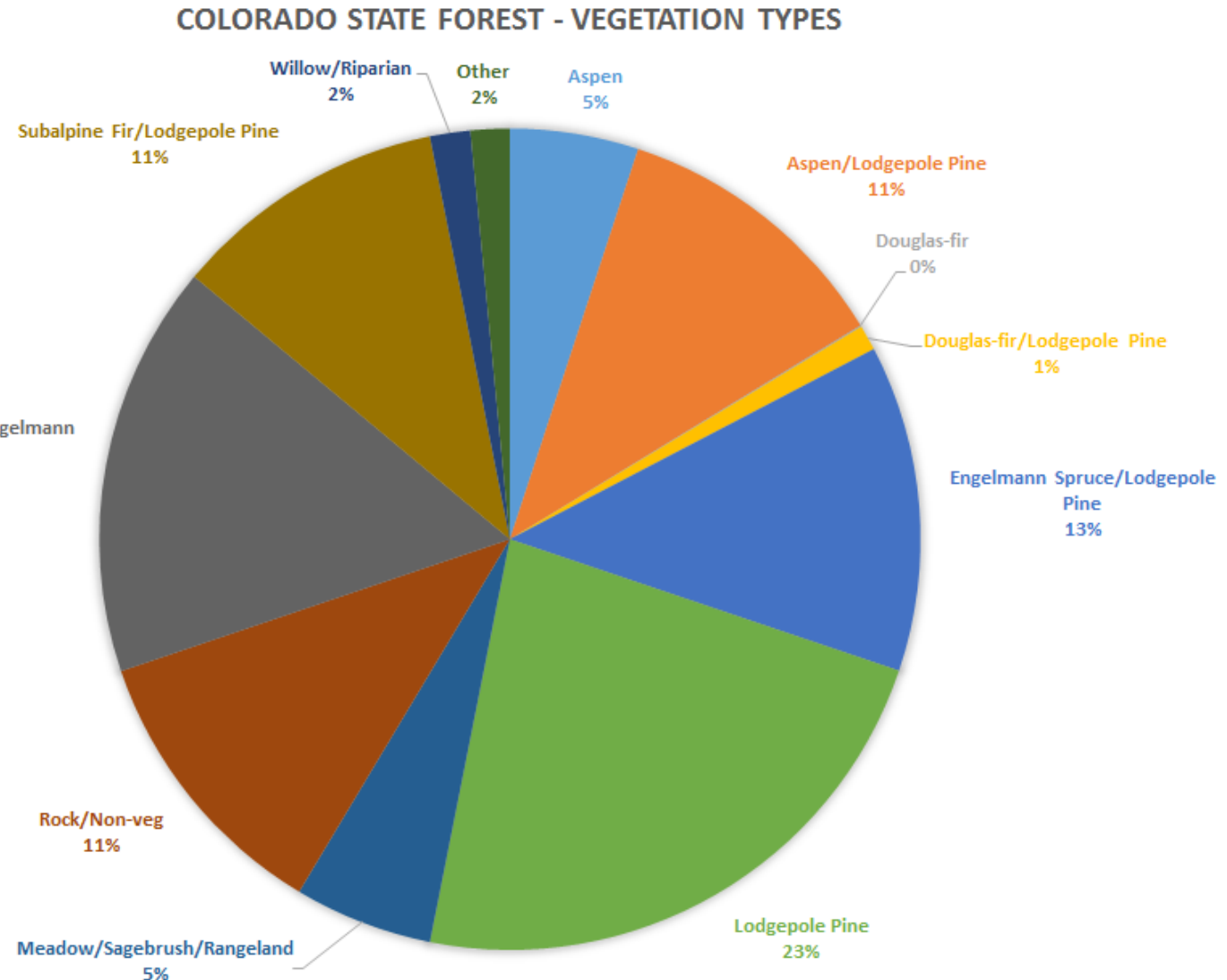
Location Overview

- Almost entirely within Jackson County
- CSF does not exist in a bubble – shares borders with the USFS, BLM, State and Private Lands



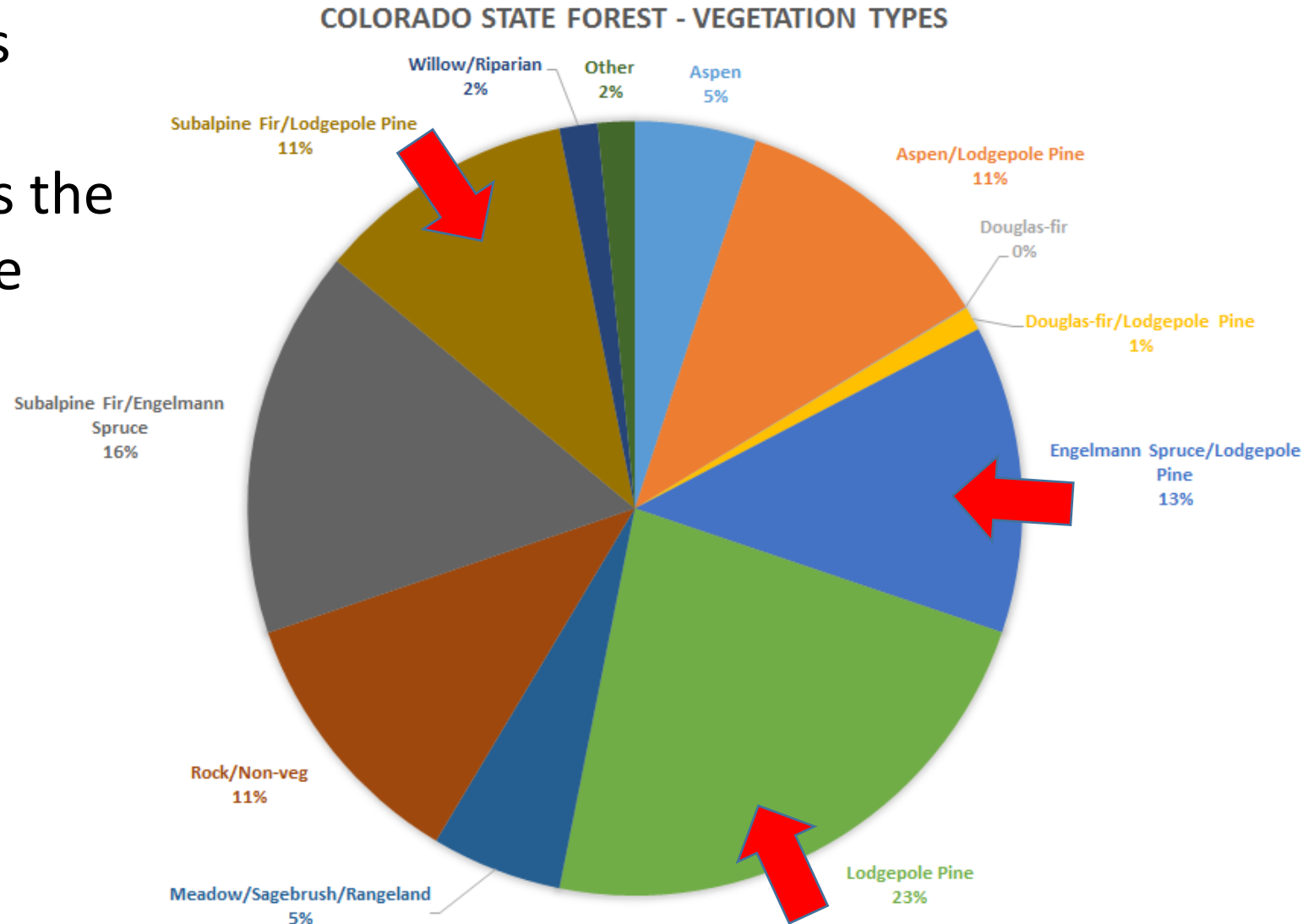
CSF = 71,348 acres

- Roughly 58,000 forested acres
- Lodgepole dominated forest is the most common vegetation type
- Both aspen and spruce-fir cover may increase following MPB



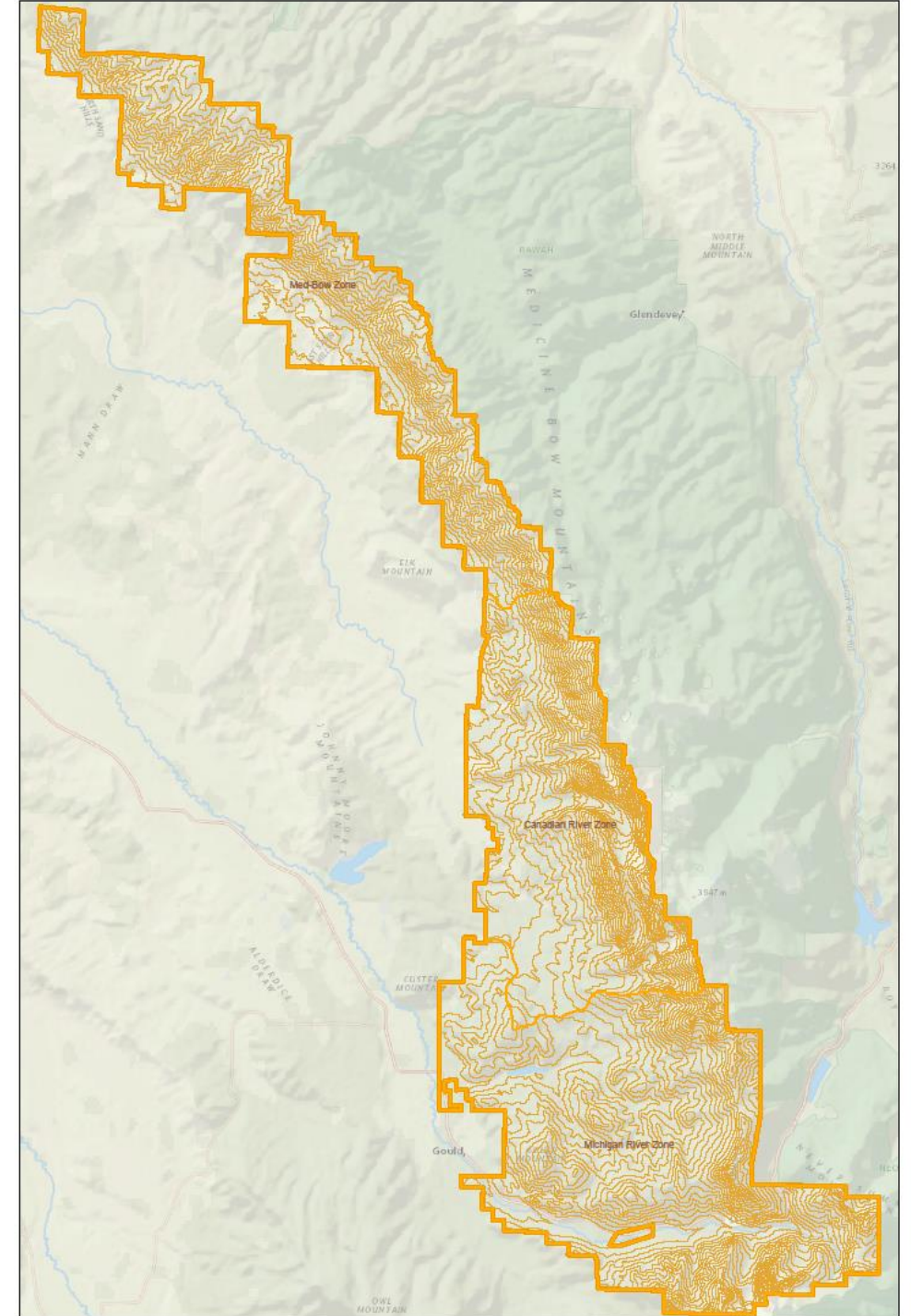
CSF = 71,348 acres

- Roughly 58,000 forested acres
- Lodgepole dominated forest is the most common vegetation type
- Aspen and Fir may increase following MPB



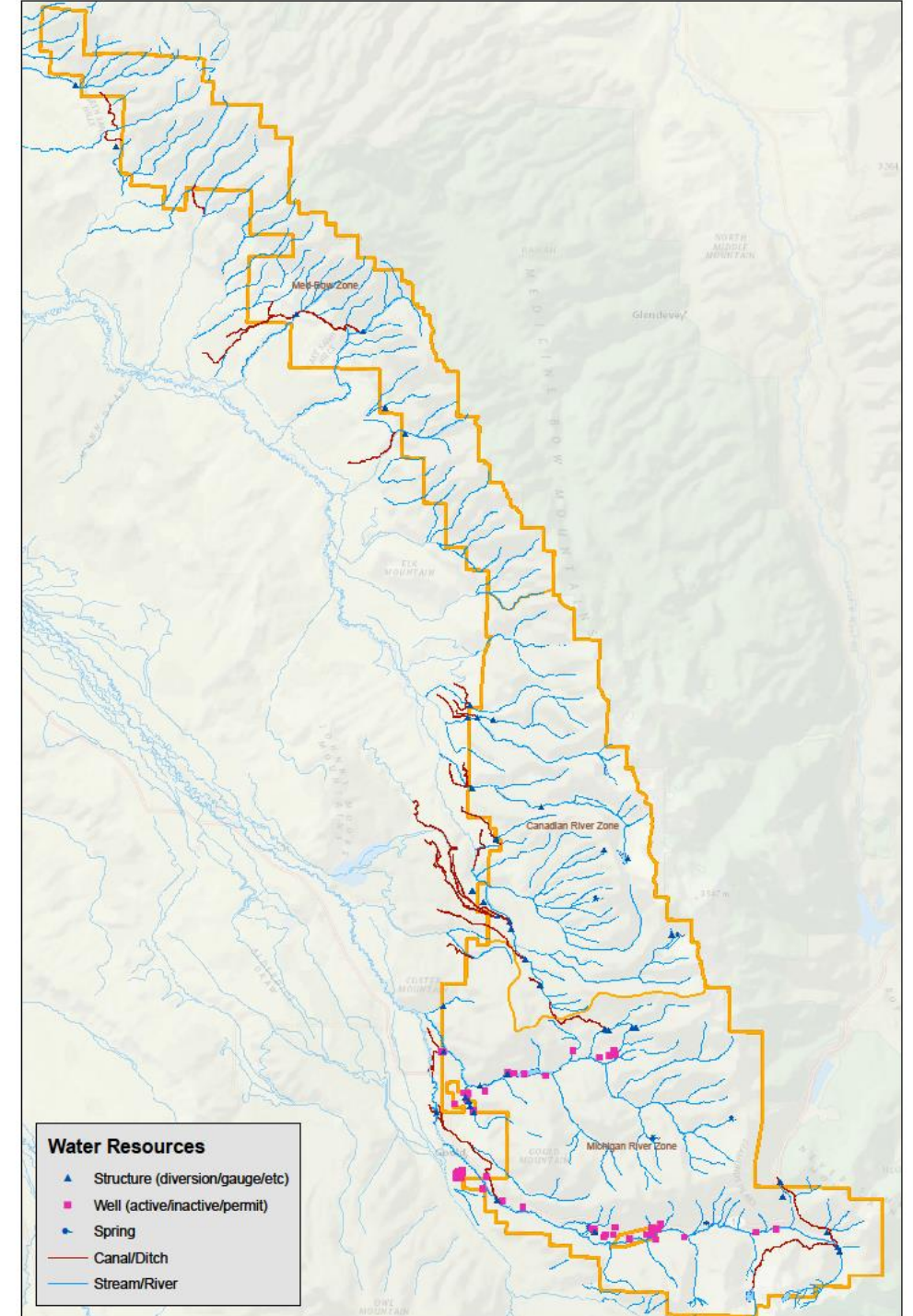
Topography and Context

- Elevation ranges from 8152 ft to 12,703ft
- Roughly 45,000 acres are classified as operable for timber management

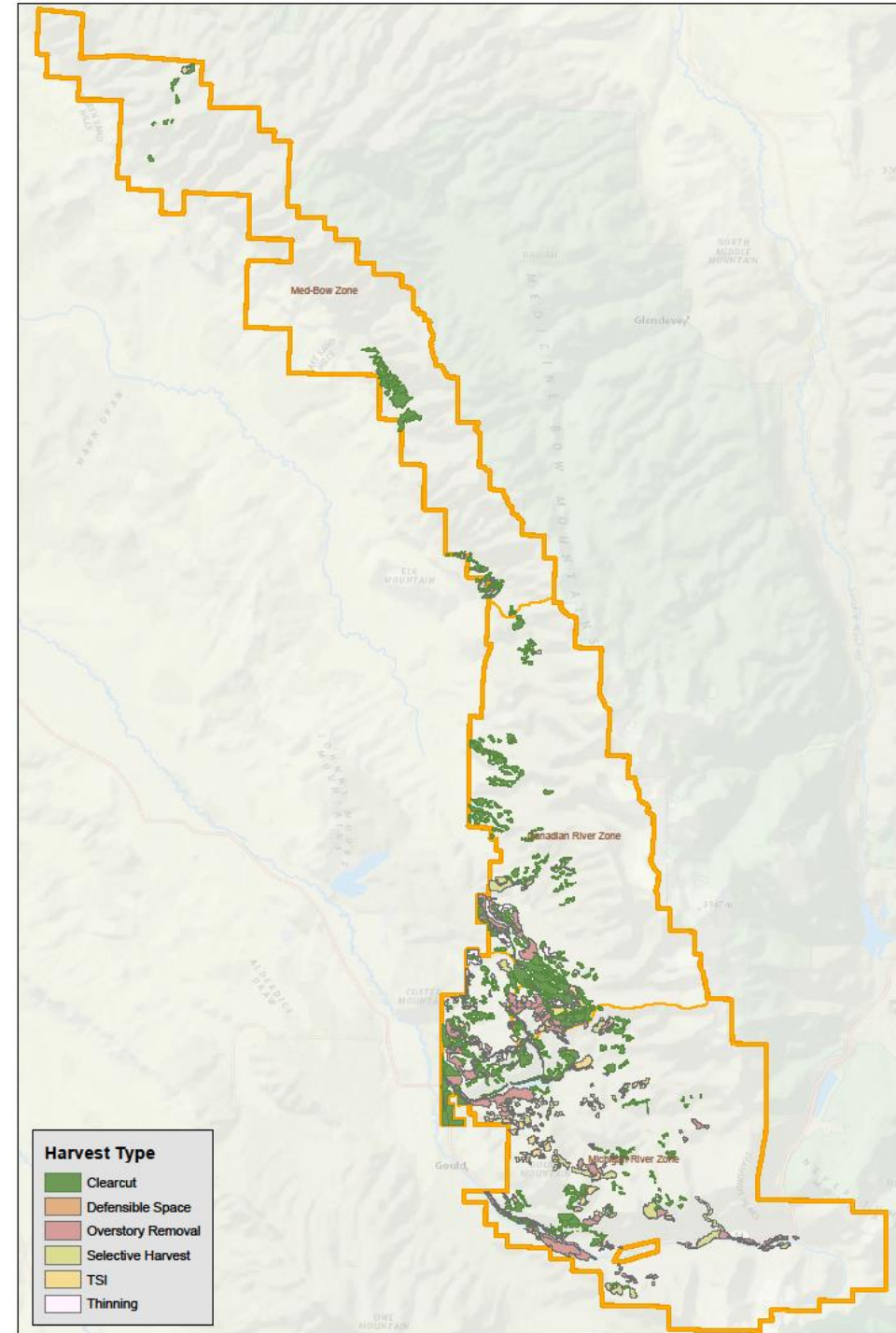


North Platte Headwaters

- 75% of Colorado water supply originates at high elevation
- Forested landscapes act as a “natural sponge” and help regulate water flow
- Downstream users include the City of Walden, ranchers and communities throughout Wyoming and Nebraska
- Michigan Ditch – City of Fort Collins



Managed Landscape



Multiple Use Management

- Forest products and ecosystem services
- Recreation
- Watershed protection
- Wildlife
- Hunting
- Grazing
- **Primary Stakeholders:** State Land Board, Colorado Parks and Wildlife, Jackson County, Downstream Users, Ranchers and the Public



COLORADO

State Land Board

Department of Natural Resources



Goals of Colorado State Forest Management

- Forest management for Colorado State Trust Land beneficiaries
- Healthy and resilient forests
- Wildlife
- Manage for a fire adapted landscape
- Protect cultural resources
- Conserve watershed health
- Education, outreach and research
- Access

Management Challenges

- MPB and spruce bark beetle mortality
- Current timber market limits our ability to meet management objectives
- Public perception of forest management
- Major increase in large scale wildfires on public lands surrounding the CSF



ASCC Site



ASCC Site Selection Criteria

- **Representative** – *Common on the State Forest and regionally*
- **Management Priority** – *Focus of forest management for next 30 to 50 years, stands advancing into size class susceptible to beetle attack*
- **Operability and Accessibility** – *Important for feasibility of harvest, and access for the public*
- **Climate Change Considerations** – *vulnerable to predicted changes in temperature and soil moisture*

Sampling

- Variable radius plots (20 BAF) with a 3.6" cutoff between saplings and overstory trees
- Fixed radius plots of 1/100th acre (11.8' radius) for seedlings and saplings
- Ten-year growth on first live tree to the North in every plot
- Total age on dominant, or co-dominant green trees within plots numbered 0 and 5