

ASCC Site Summary – Colorado State Forest



Sampling Methodology

- Variable radius plots (20 BAF) with a 3.6” cutoff between saplings and overstory trees
- Fixed radius plots of 1/100th acre (11.8’ radius) for seedlings and saplings
- Ten-year growth on first live tree to the North in every plot
- Total age on dominant, or co-dominant green trees within plots numbered 0 and 5
- 25 plots were surveyed in total across units 1 & 2

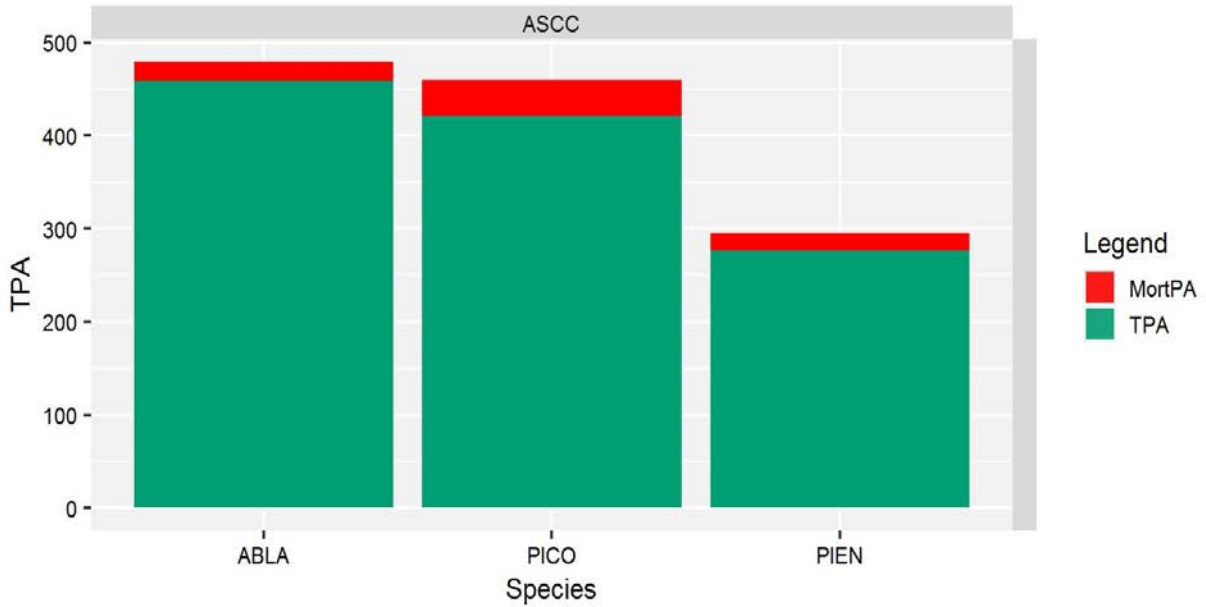
Unit 1 – Stand Data

Unit 1	11 plots	
Forest Cover Type	Lodgepole Pine (PICO), Subalpine Fir (ABLA), & Engelmann Spruce (PIEN)	
Unit Size	28 Acres	
Slope	5 - 30%	
Aspect	E, NE, NW	
Average Height	41 ft.	
Total Basal Area	148 sq. ft.	
Species	Total BA	
ABLA	43	
PICO	48	
PIEN	57	
Total overstory (>dbh) Trees per Acre	1,238	
Species	Total TPA	
ABLA	484	
PICO	460	
PIEN	295	
Total Seedlings per Acre	2,207	
Species	Total Seedlings/ Ac.	
ABLA	1143	
PICO	107	
PIEN	957	
Estimated Stand Age	100 Years	
Site index (average across both stands)	PICO: 45-61 ; PIEN: 50-64	

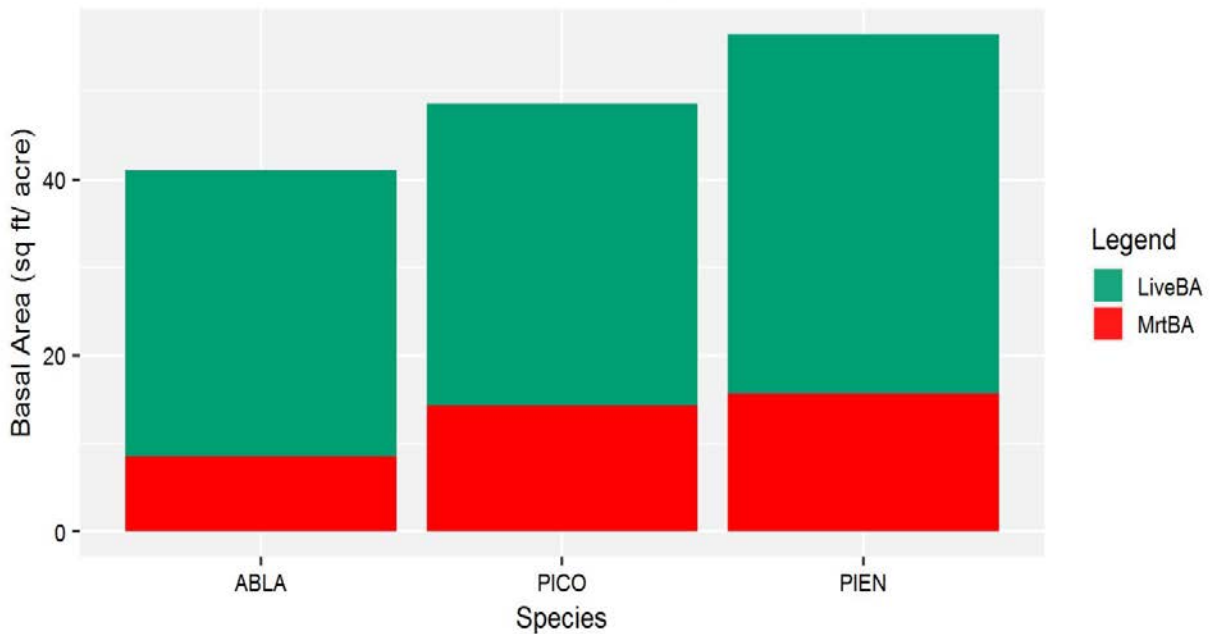
Confidence level	68%
Standard Error	14-15% depending on characteristic (trees per acre; basal area per acre)

Unit 1 Overstory:

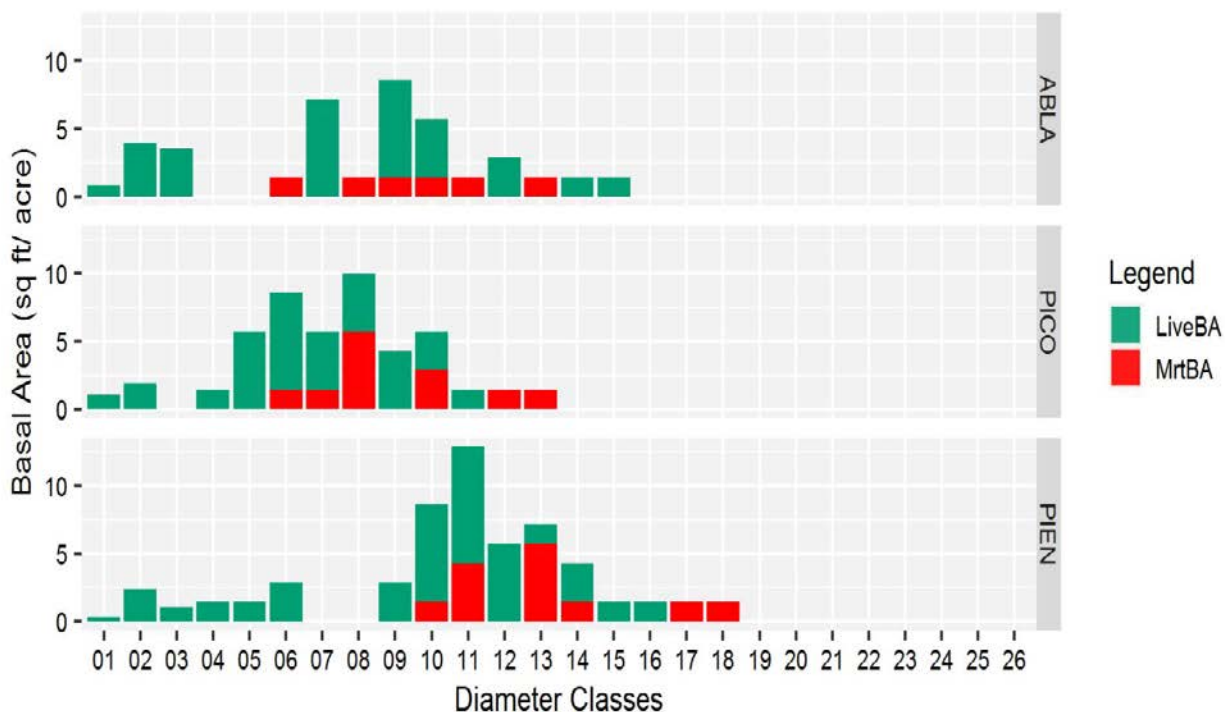
Unit 1: Species distribution



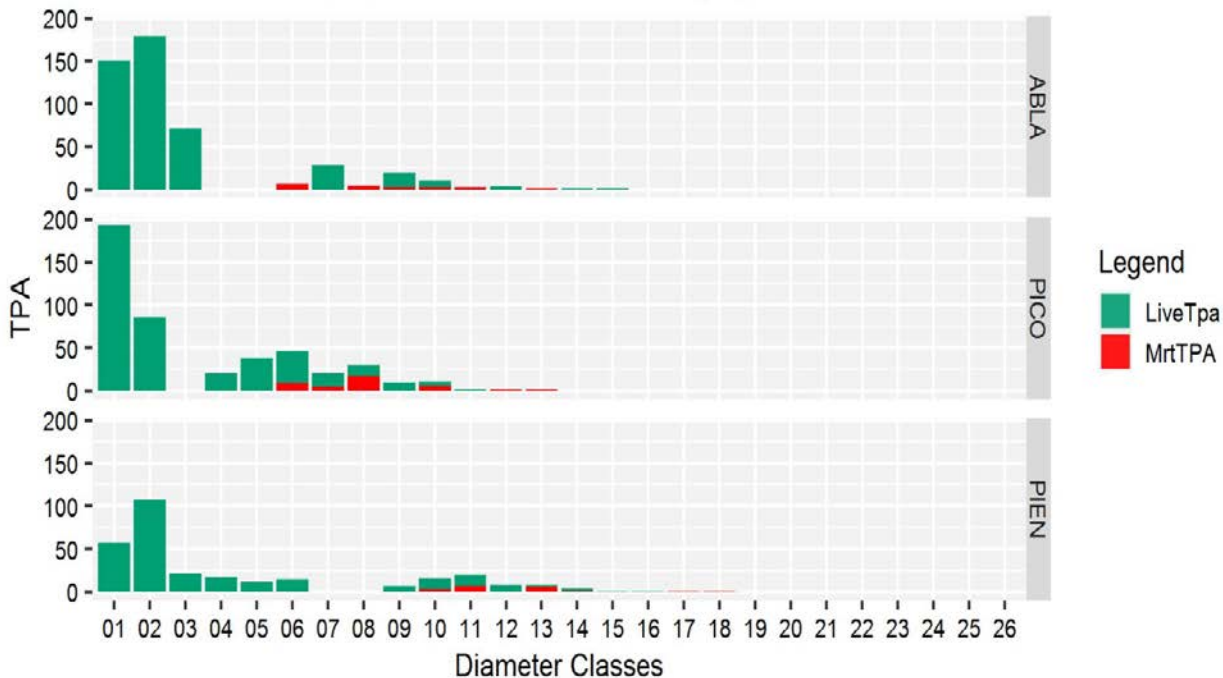
Unit 1: Basal Area by species



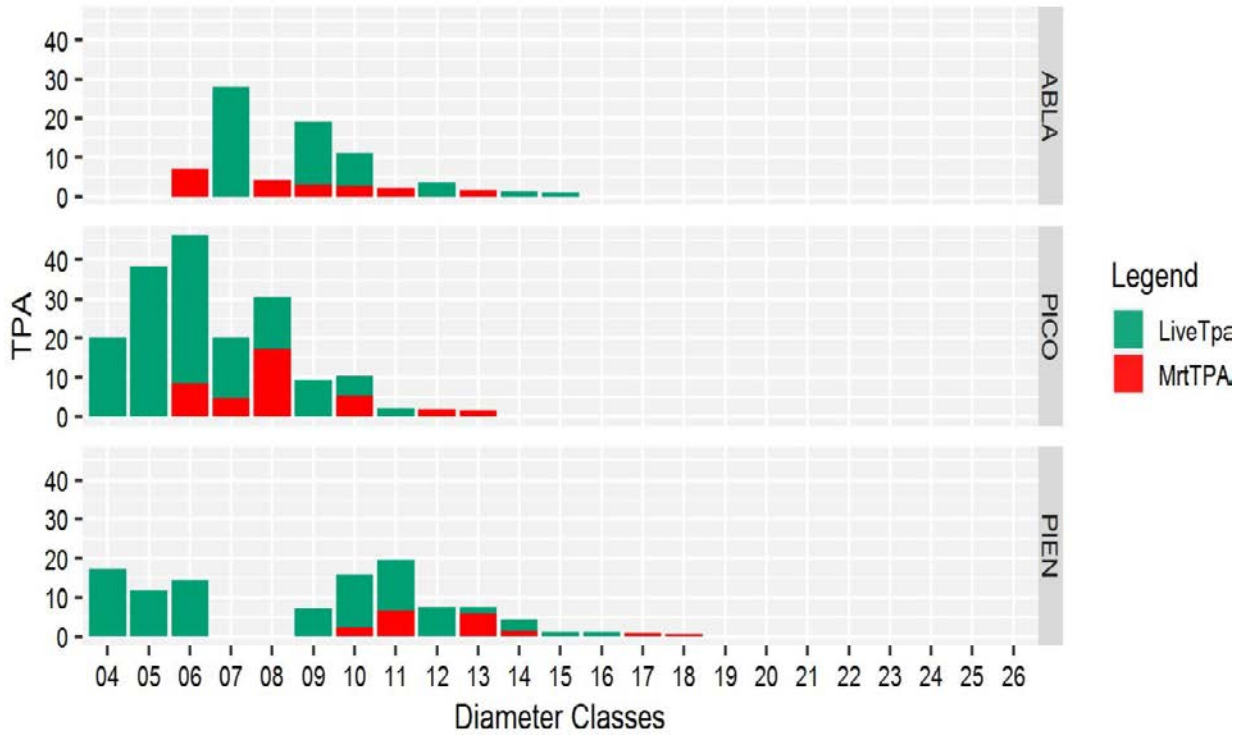
Unit 1: Basal Area by diameter and species



Unit 1: diameter distribution by species

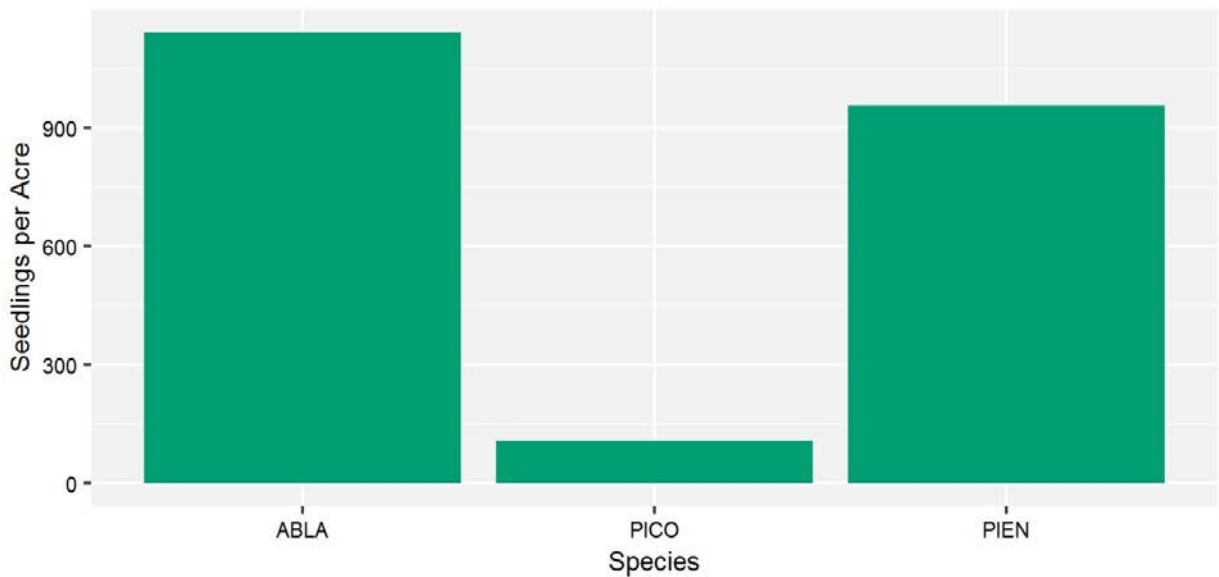


Unit 1: large tree diameter distribution by species



Unit 1 Seedlings:

Unit 1: Regeneration

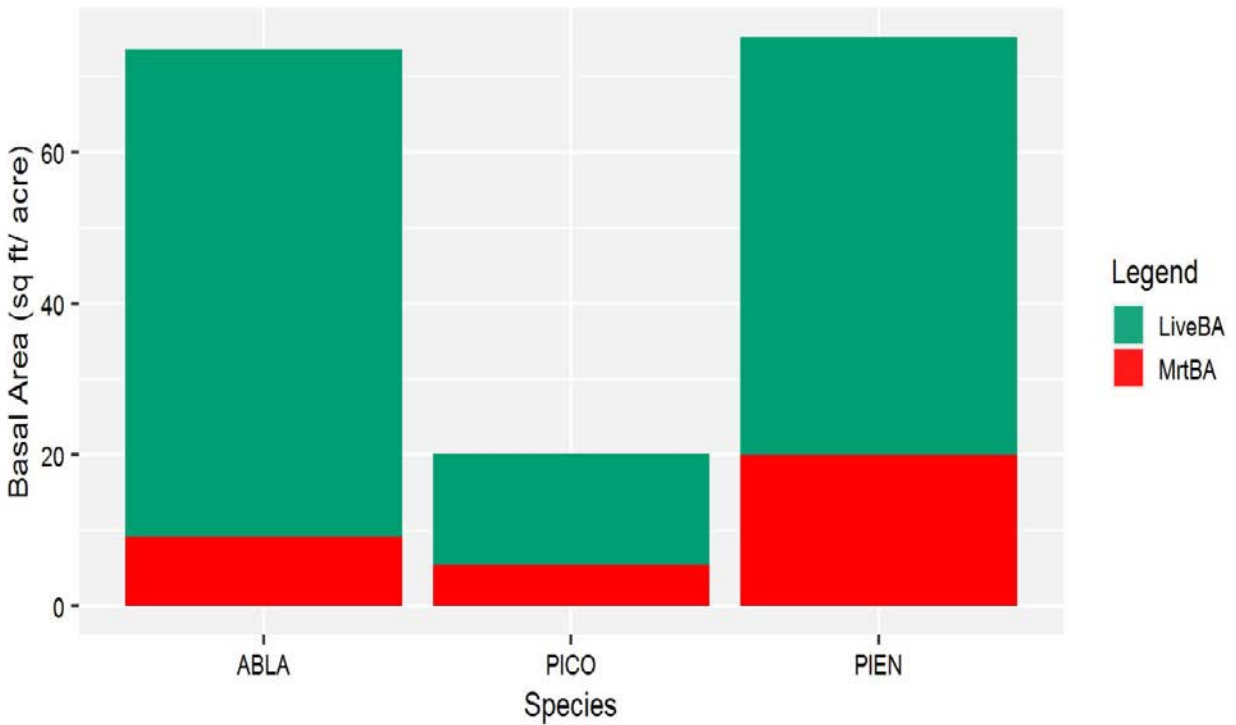


Unit 2 – Stand Data

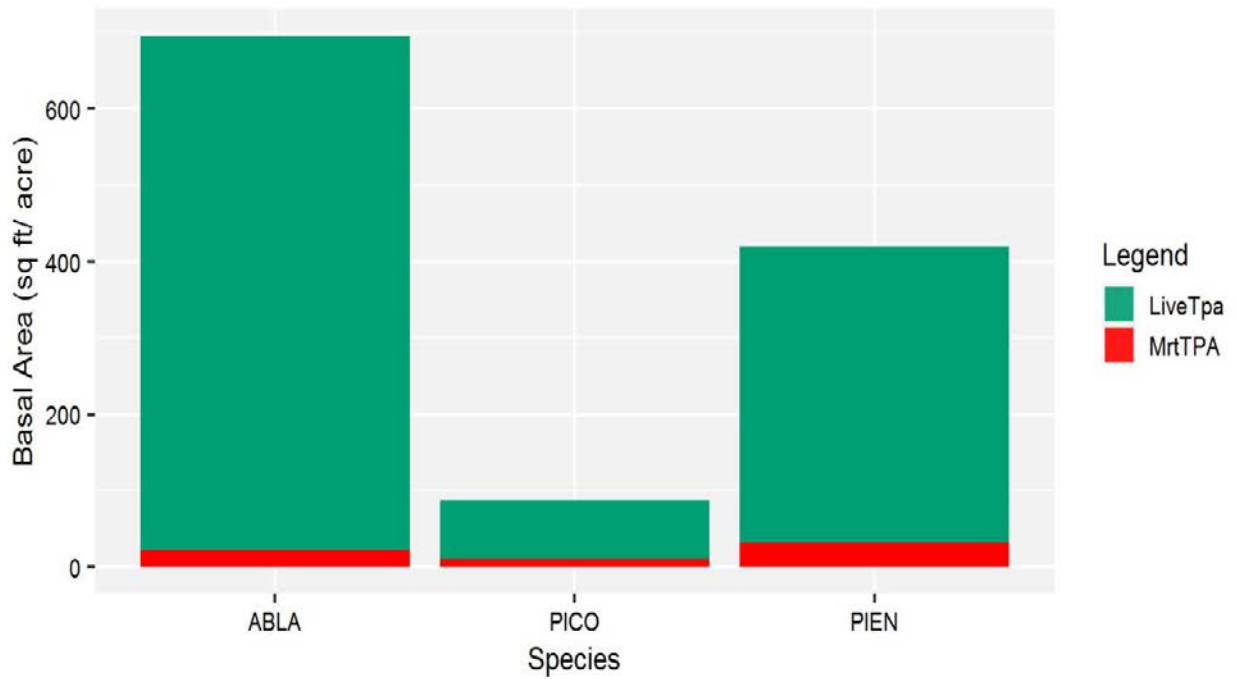
Unit 2		14 plots
Forest Cover Type		Subalpine Fir; Engelmann Spruce; Lodgepole Pine
Unit Size		29 Acres
Slope		5 - 30%
Aspect		NE, E, S
Average Height		50 ft.
Basal Area		169 ft ²
Species	Total BA	
ABLA	74	
PICO	20	
PIEN	75	
Overstory Trees per Acre		1,204
Species	Total TPA	
ABLA	696	
PICO	87	
PIEN	419	
Seedlings per Acre		5,400
Species	Total Seedlings /Ac.	
ABLA	4273	
PICO	54	
PIEN	1073	
Estimated Stand Age		105 years
Site Index (average across both stands)		PICO: 45-61 ; PIEN: 50-64
Confidence level		68%
Standard Error		8-12% depending on characteristic

Unit 2 Overstory:

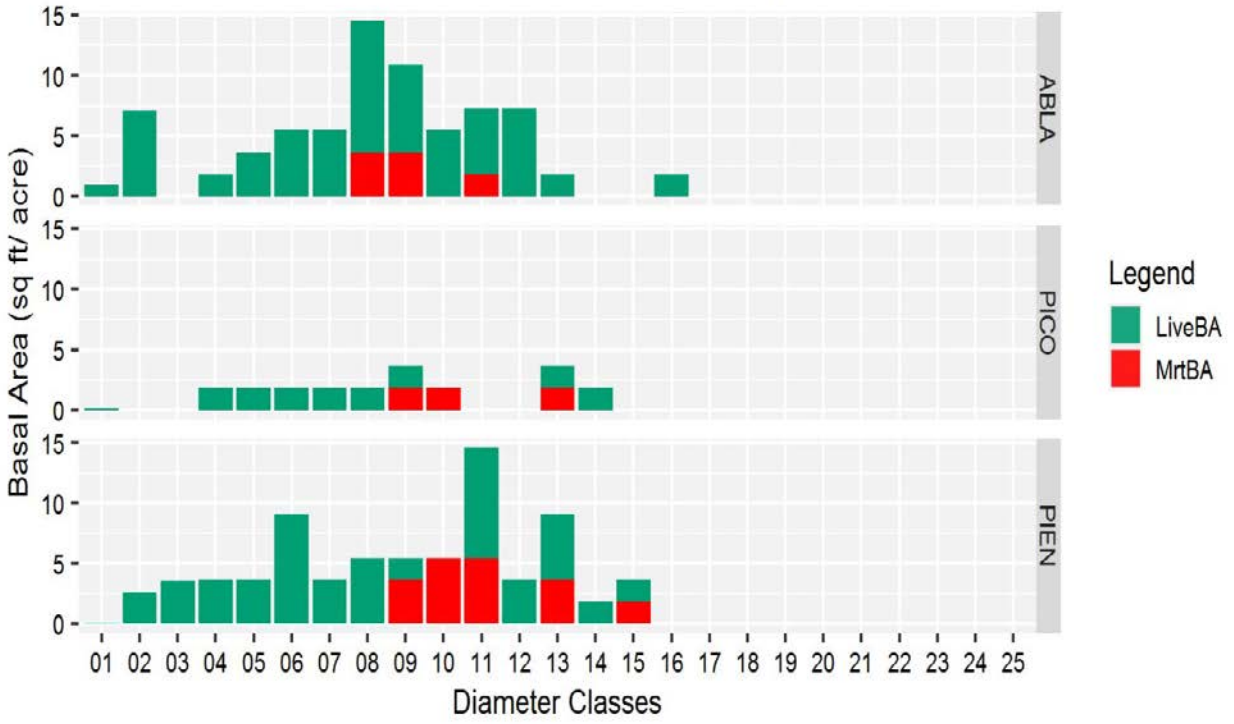
Unit 2: Basal Area by species



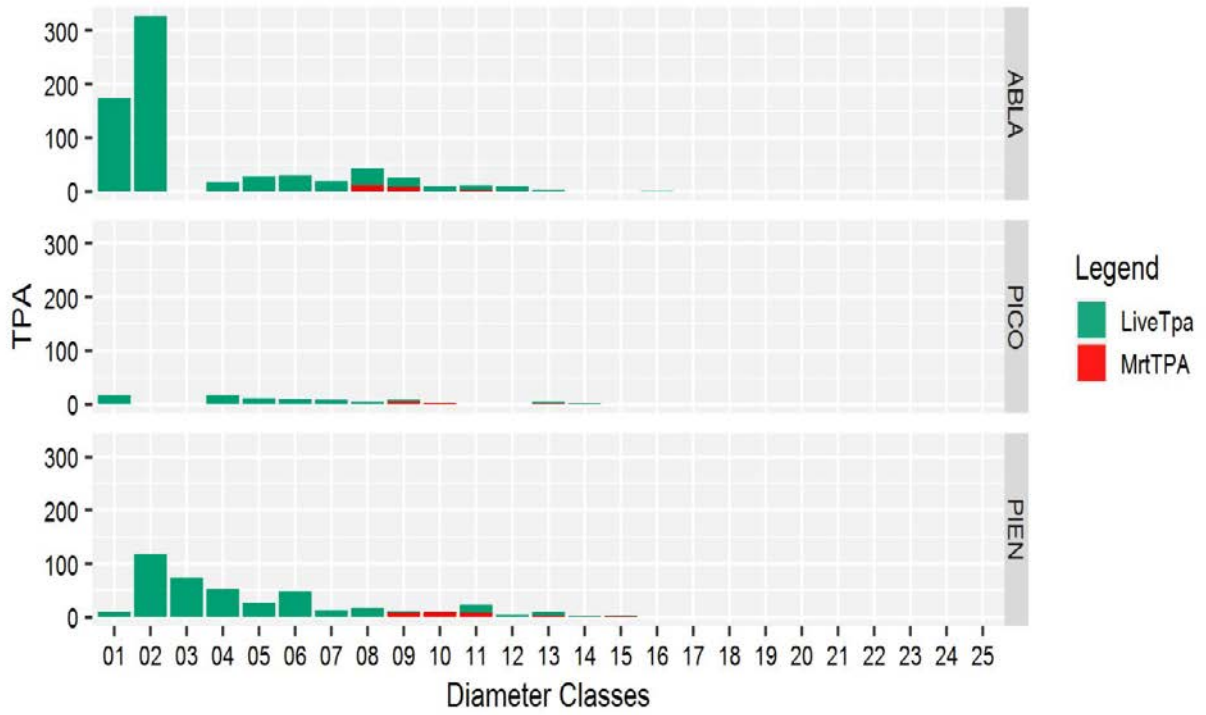
Unit 2: Species Distribution



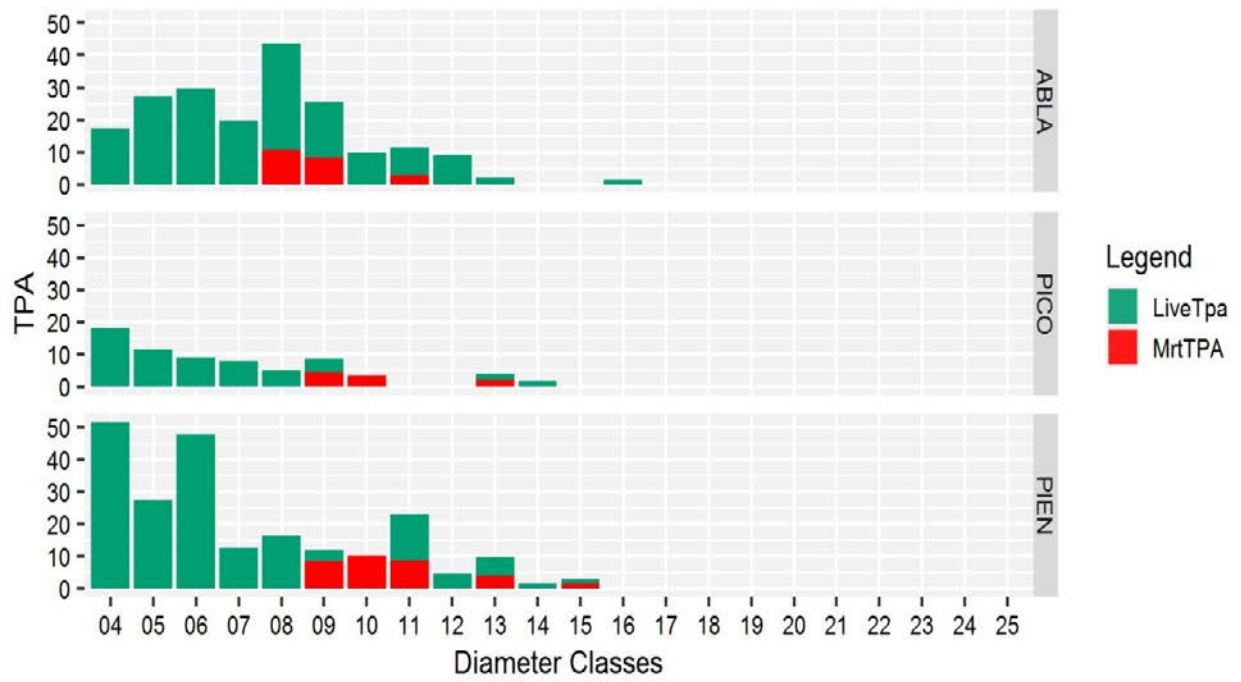
Unit 2: Basal Area by diameter and species



Unit 2: diameter distribution by species



Unit 2: large tree diameter distribution by species



Unit 2 Seedlings:

Unit 2: Regeneration

