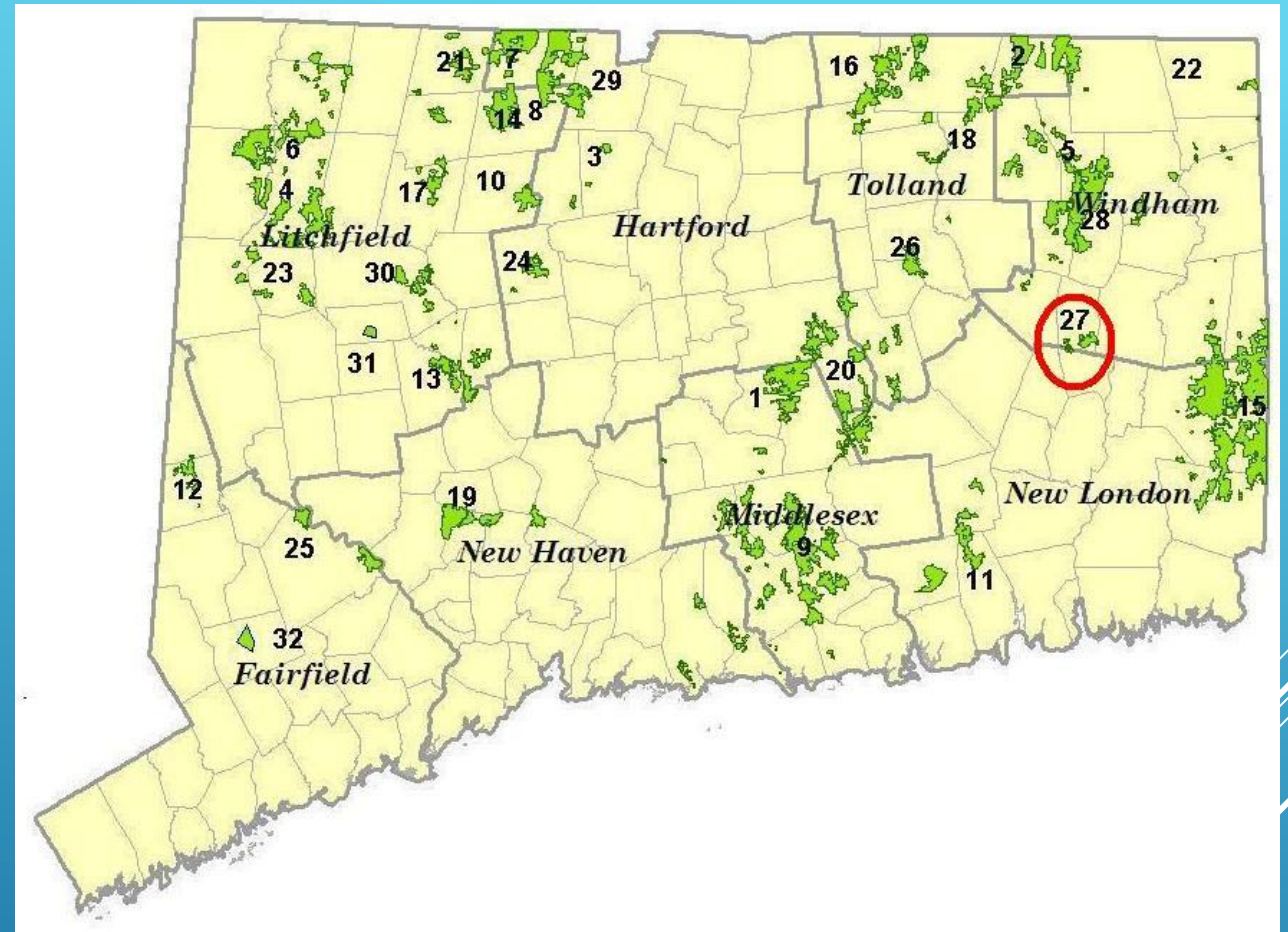


MOHEGAN STATE FOREST OVERVIEW

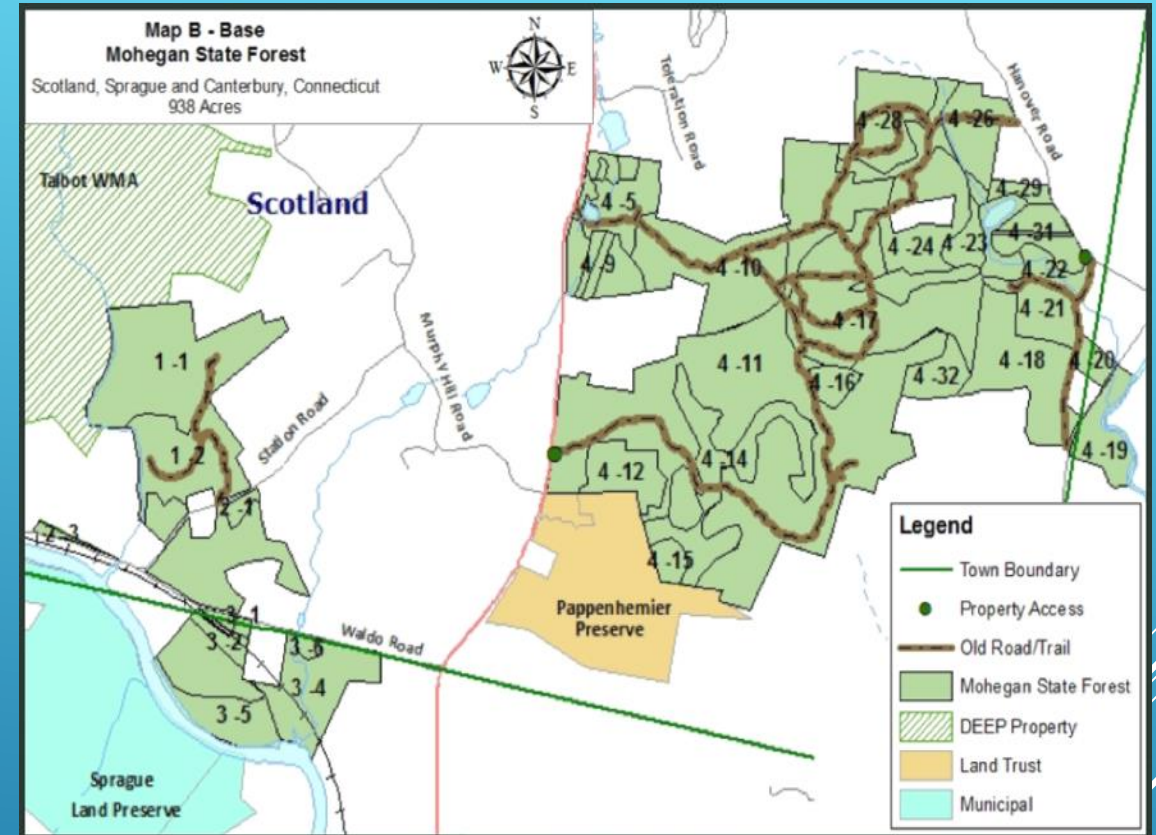
Adaptive Silviculture for Climate Change
Workshop – October 19-21, 2020

- ▶ Background information
 - ▶ Mohegan SF
 - ▶ Town / Landscape
 - ▶ Users
 - ▶ Markets & Mills
- ▶ Goals & Objectives
 - ▶ Property
 - ▶ Stand 4-11
- ▶ Desired Future Conditions
 - ▶ 15-years
 - ▶ 100-years
- ▶ Planned Management Activities (E-1076)
- ▶ Stand-level inventory data – Amanda



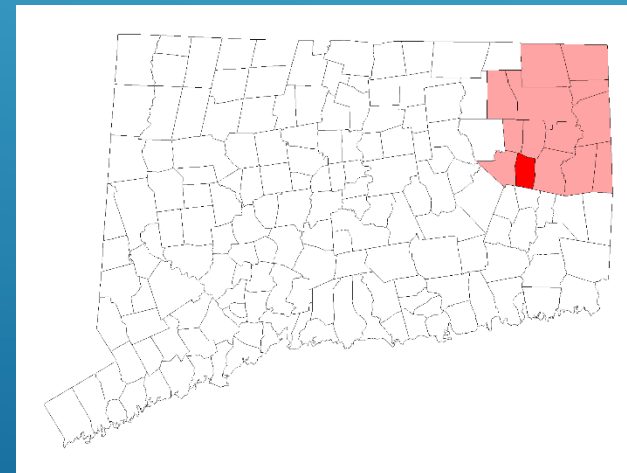
OVERVIEW

- ▶ 1960 – 300 acres from M. Bowers
 - ▶ “Demonstrating good forest mgmt.”
- ▶ Late 1960’s – 89 acres – Edward Waldo Tract
- ▶ Currently 938-acres
- ▶ Forest mgmt. initiated in 1944
- ▶ DEEP Mgmt.
 - ▶ Seed orchards – mid-1970’s
 - ▶ Mgmt. Plan – 1985
 - ▶ 88-acres thinning – early 1990’s
 - ▶ 69-acres shelterwood’s – early 1990’s



MOHEGAN SF BACKGROUND

- ▶ Scotland, CT – 1,700 residents
 - ▶ Rural/rural-residential
 - ▶ Agricultural and forested
 - ▶ Bisected by State Highways; 97, 14
 - ▶ Accessible to; Norwich & Willimantic
 - ▶ Political interest in MSF
- ▶ Recreation at MSF
 - ▶ Local foot-traffic
 - ▶ Horses & horse trailers
 - ▶ Hunting / Fishing
 - ▶ Unauthorized motorized



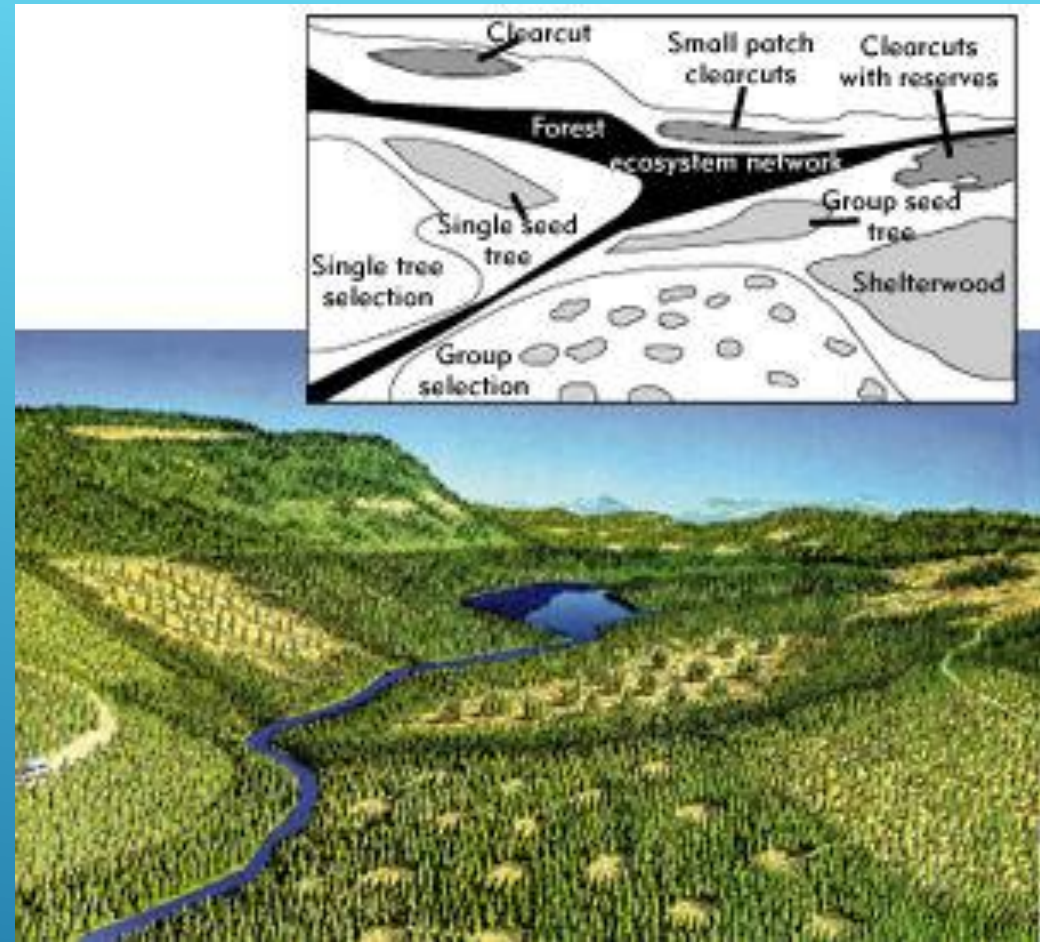
LOCAL COMMUNITY

- ▶ Strong community of independent loggers buying stumpage
- ▶ Hardwood dominated
- ▶ RR Tie & Grade Mills
- ▶ Mulch market for low-quality trees to produce clean chips
- ▶ Recent impacts from; global trade, oak mortality, market saturation, COVID-19 (1 mill closure in 2020)



MARKETS & MILLS

- ▶ Enhance forest health, productivity, & diversity
- ▶ Increase forest resilience and facilitate adaptation to climate change
- ▶ Improve wildlife habitat diversity
- ▶ Facilitate interior forest access through road improvements
- ▶ Control the spread of invasive plants
- ▶ Increase public use of MSF
- ▶ Protect the forest from encroachment



GOALS & OBJECTIVES - MSF

▶ DEEP

- ▶ Promote the persistence of oaks following mortality event
- ▶ Improve stand-level vigor
- ▶ Promote opportunities for structural retention
- ▶ Allocate growing space to young-forest regeneration

▶ UCONN

- ▶ Facilitate forest adaptation to climate change
- ▶ Demonstrate silvicultural concepts to achieve adaptation
- ▶ Improve forest structure



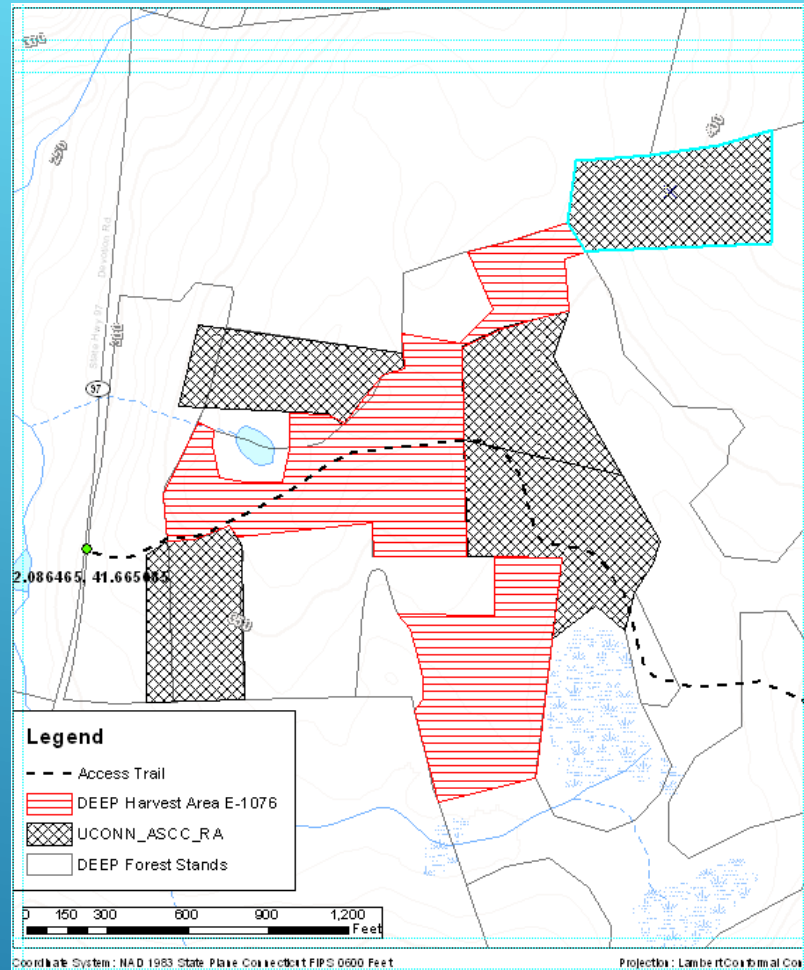
GOALS & OBJECTIVES – STAND 4-11

- ▶ 15-years
 - ▶ More balanced size-class distribution
 - ▶ Diversified forest structure
 - ▶ Young-forest habitat benefits
 - ▶ Research & Demonstration
 - ▶ Broader community use
- ▶ 100-years
 - ▶ Potential for increased % oak-hickory – summer droughts
 - ▶ Representation from all current spp.
 - ▶ Diversity of successional stages
 - ▶ Invasive spp. control
 - ▶ Carbon benefits; on-site, wood products

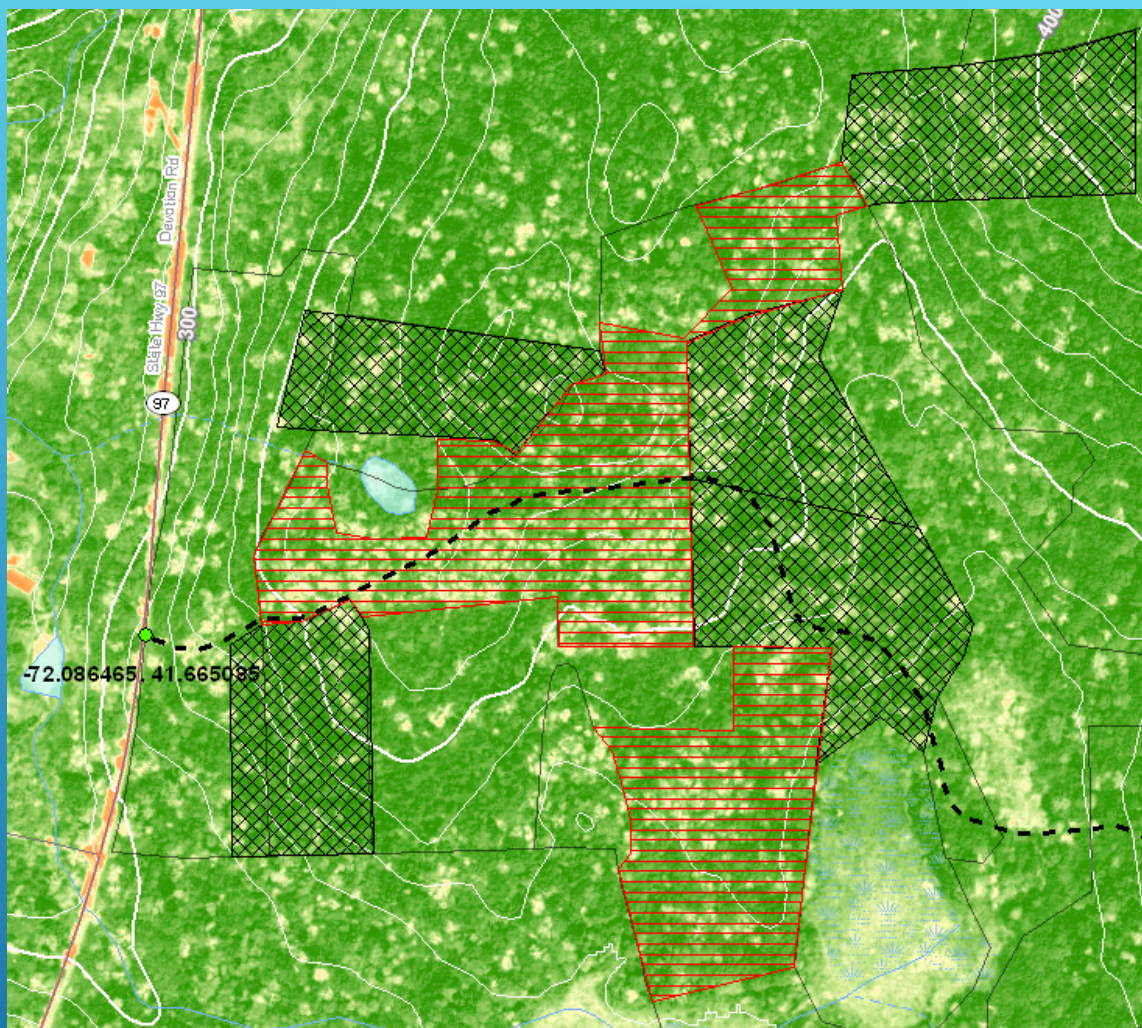


DESIRED FUTURE CONDITIONS

- ▶ Forest Operation Plan E-1076 (M. Gallagher)
- ▶ 22-acres of 'irregular shelterwood'
 - ▶ Release established regeneration
 - ▶ Retains avg. 30 square-feet of BA
 - ▶ BA Range – 0-50 sq. ft.
 - ▶ Advanced regen, residual AGS
 - ▶ Focus on highest densities of oak mortality in stand 4-11 (west)

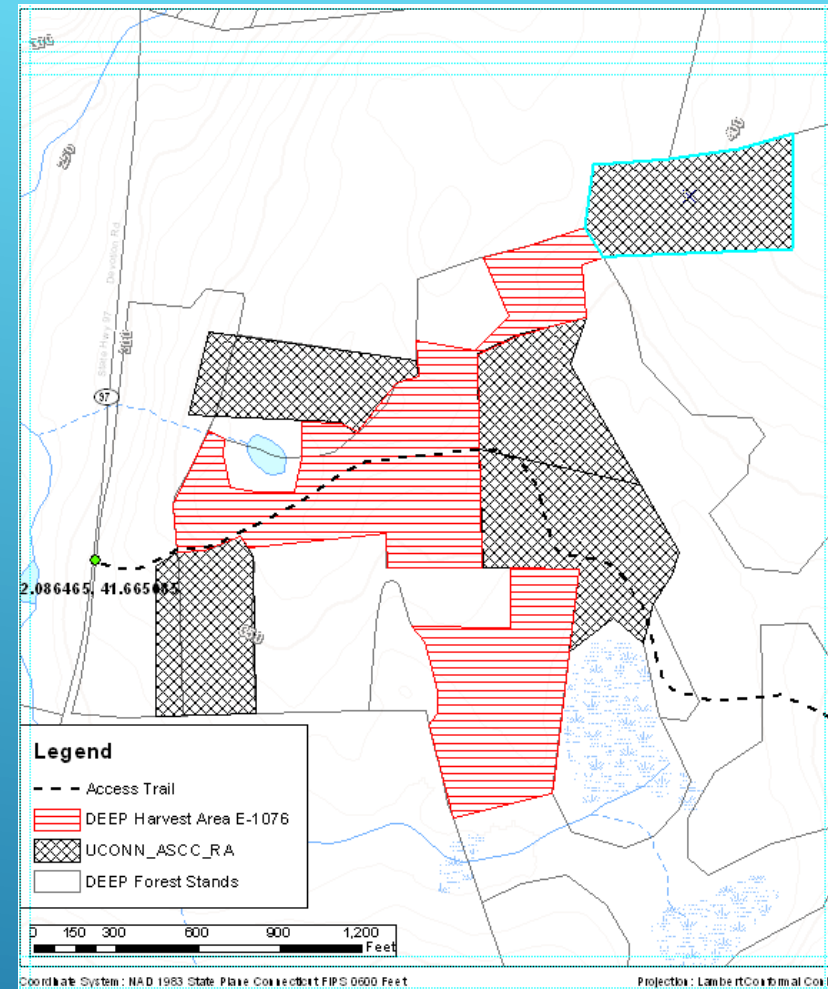


PLANNED MGMT. ACTIVITIES – DEEP



PLANNED MGMT. ACTIVITIES

- ▶ 25-acres for ASCC – 4 potential “treatment areas” around the periphery of the DEEP treatment site
- ▶ Incorporate the recommendations from the workshop into the mgmt. of the UCONN ASCC sites
- ▶ Revise E-1076 to incorporate ASCC treatments
- ▶ Prepare, bid, and execute a harvest



PLANNED MGMT. ACTIVITIES – UCONN / DEEP