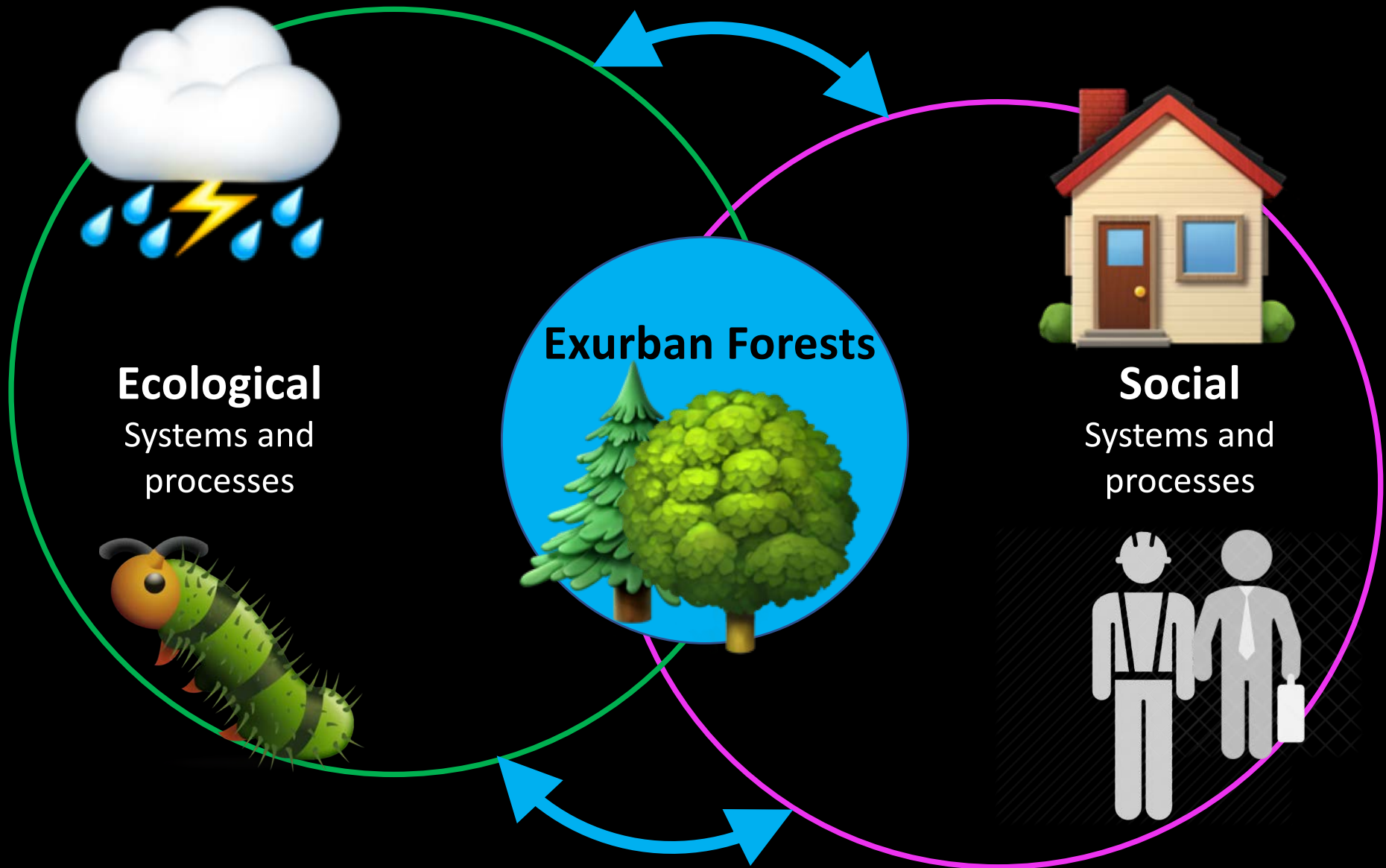


The social-ecological system

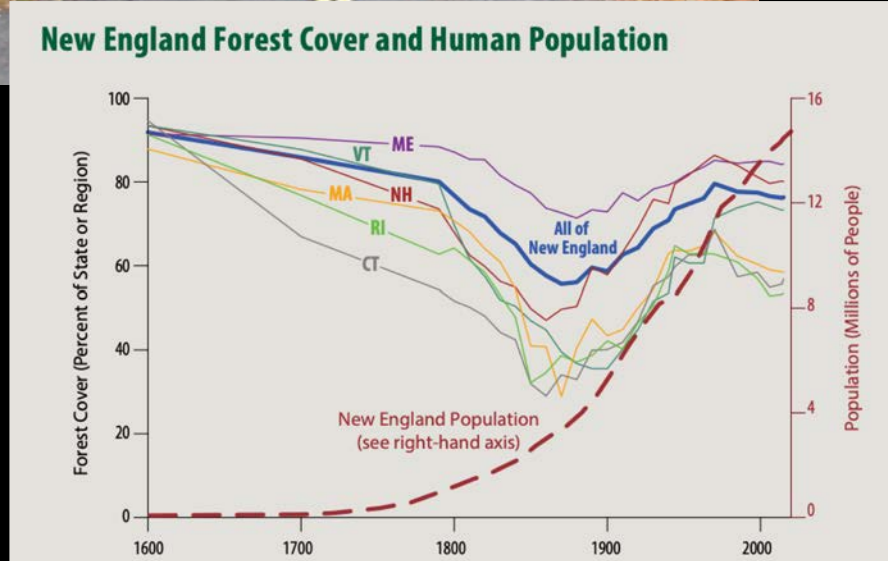
Where the forest ecosystem is influenced by the social and ecological conditions around it, and influences them in turn.



Ecological Systems and processes

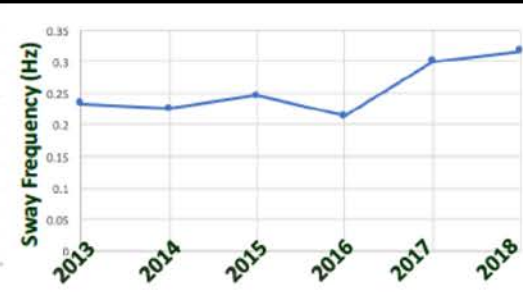
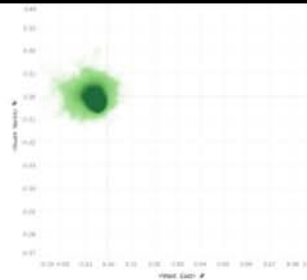
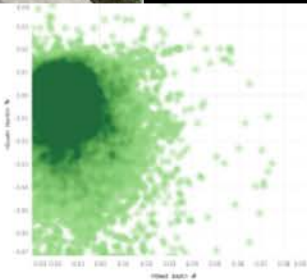
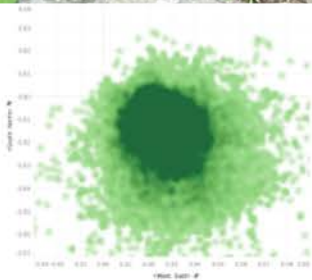


Social Systems and processes

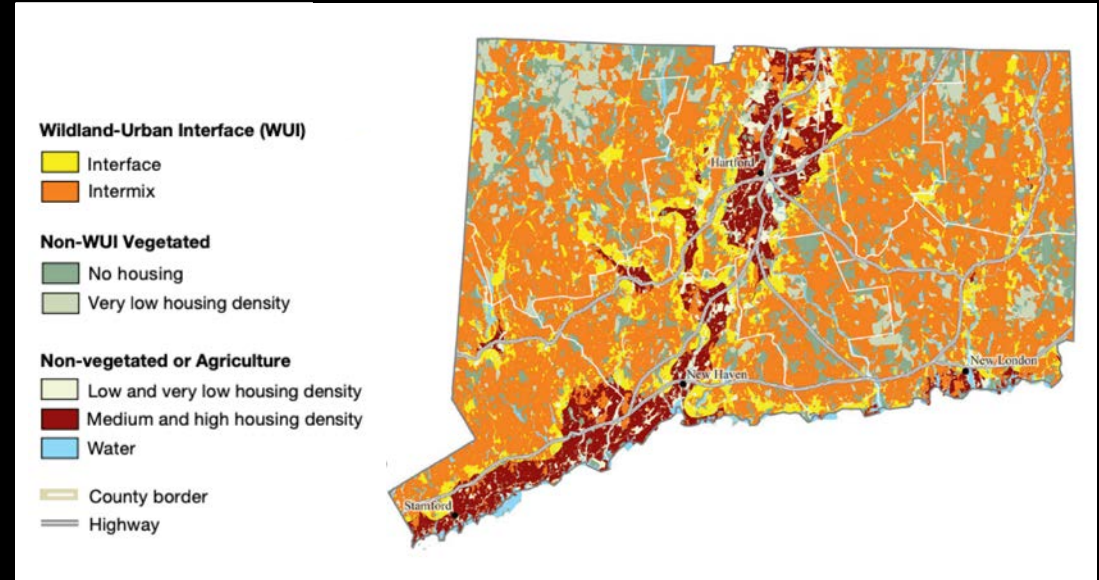
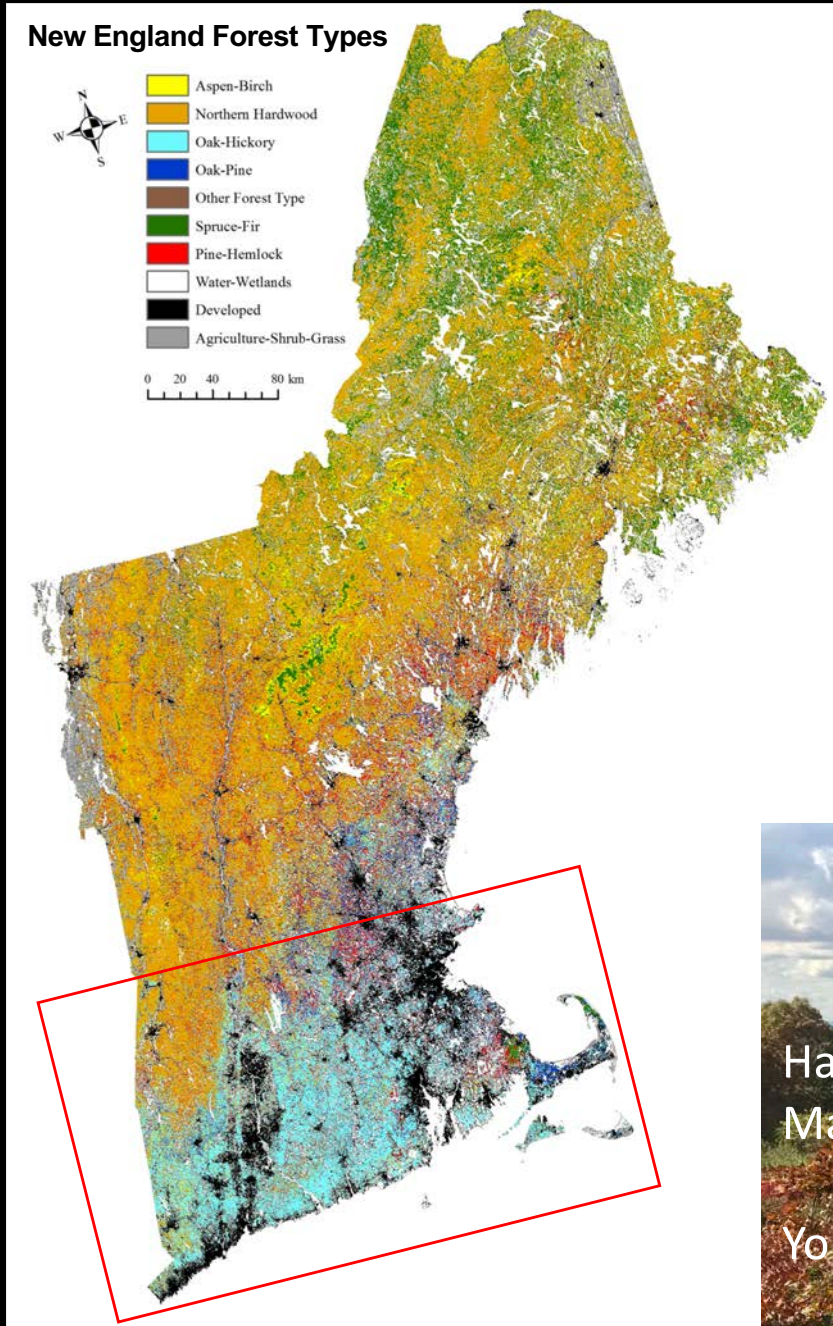


Tree# 4390

Red oak
Diameter: 68cm
Height: 31m
Crown radius: 5m
Dominant in canopy
Edge of stand

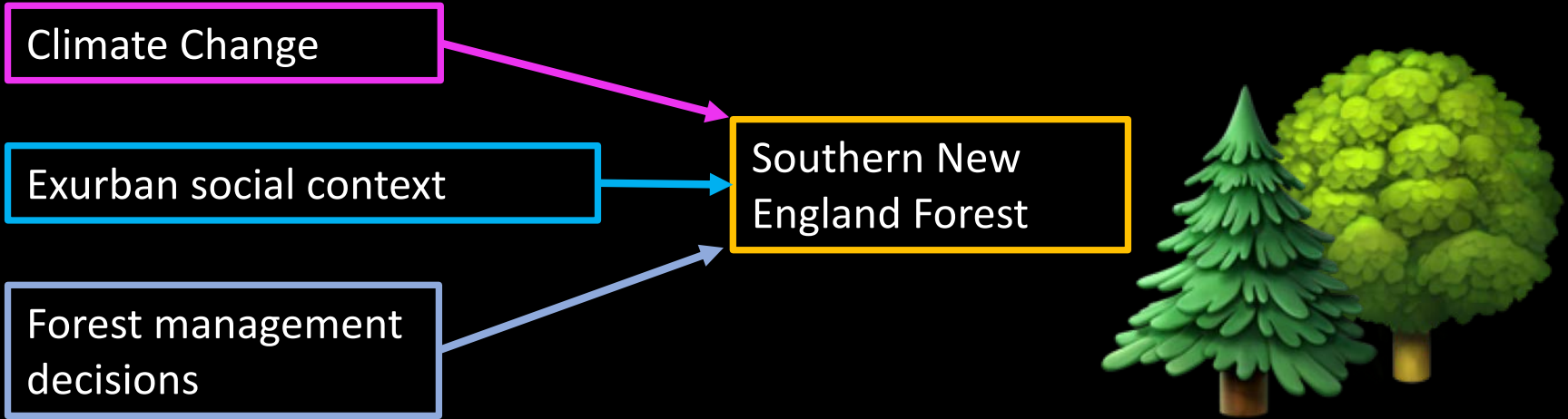


Southern New England (SNE) is made of the 4th, 5th and 6th most densely populated states. SNE is also 50% “forested” and over 70% tree-covered. CT is 65% “Wildland-urban-interface.”



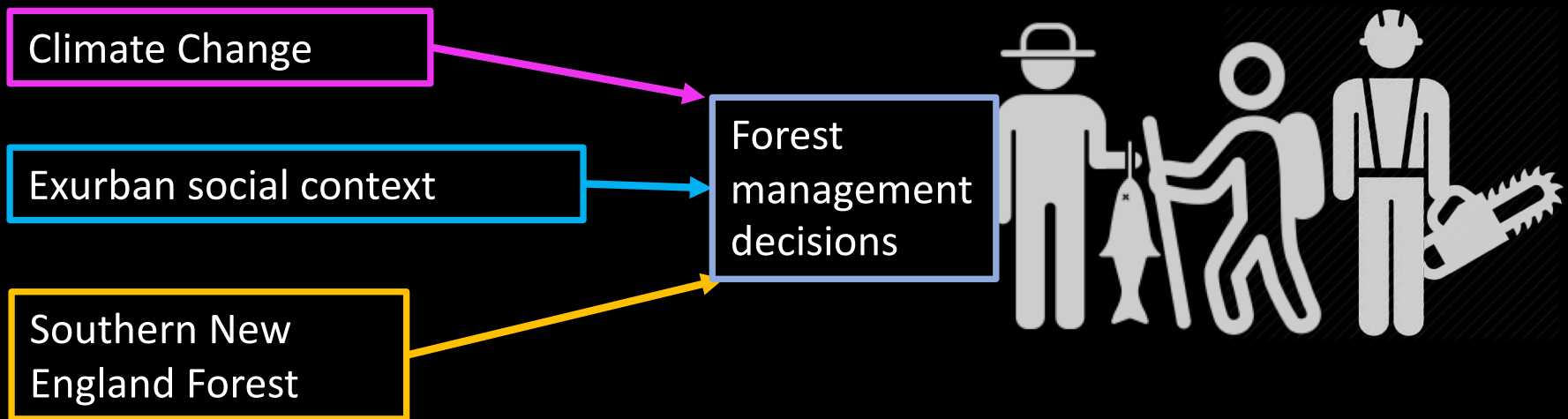
An important principle of adaptive management is to give the system the tools to self-organize after a disturbance, and with integrated ecological and social systems, BOTH systems need those tools.





The workshop

The social science study



On this complex landscape we see both **opportunities** (such as openness of forestry professionals, engagement of landowners) and **challenges** (such as misunderstanding by engaged public) for adaptive management practices.



Connecticut Coverts Project

September 17, 2018 · 🌐



Kevin Witkos is at Massacoe State Forest.

June 19 · Simsbury · 🌐

