

Should shortleaf pine be on the Hoosier National Forest?

A story of a silviculturist who took a stand

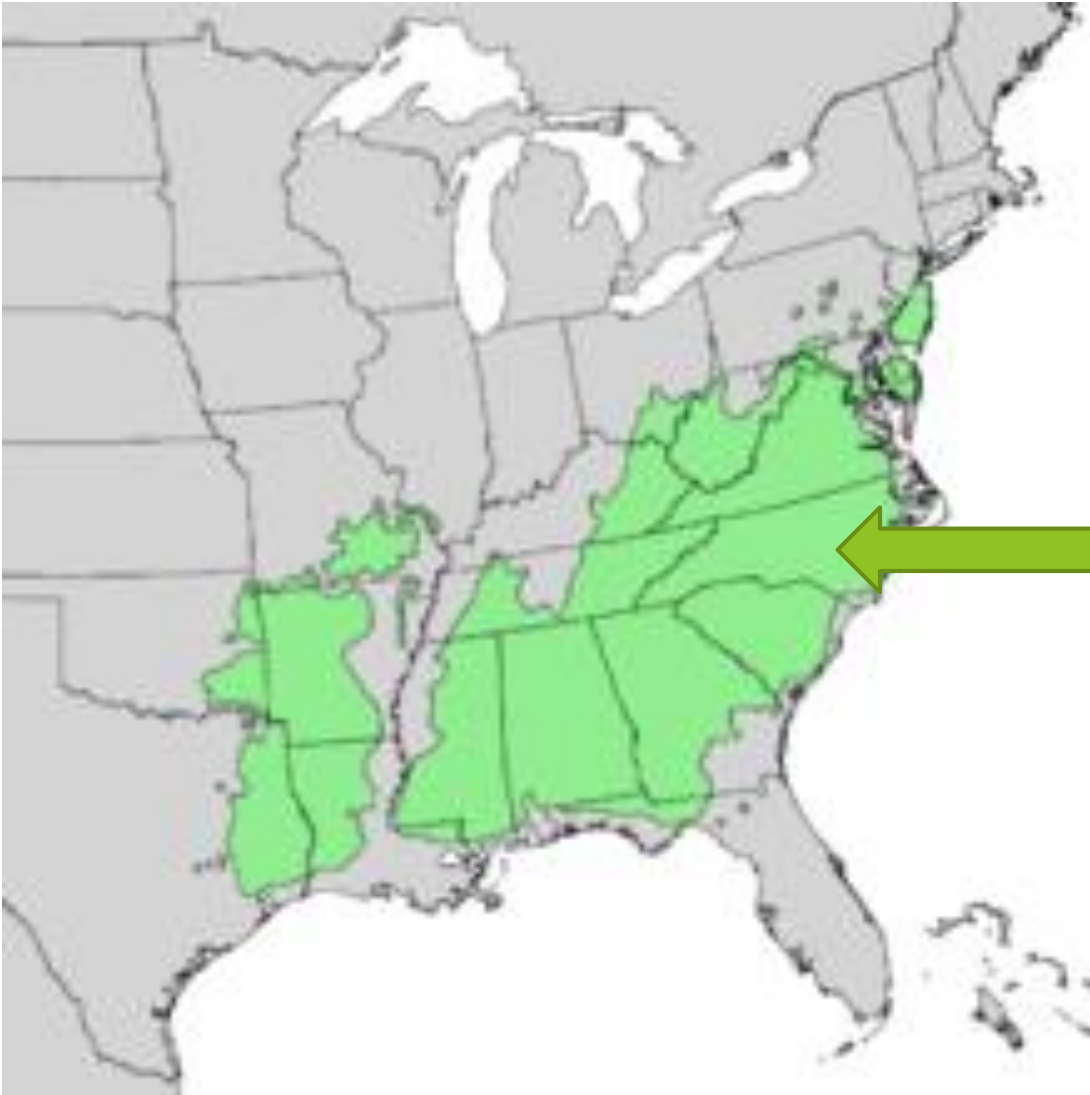
The Lands Nobody Wanted



Typical pine stand today

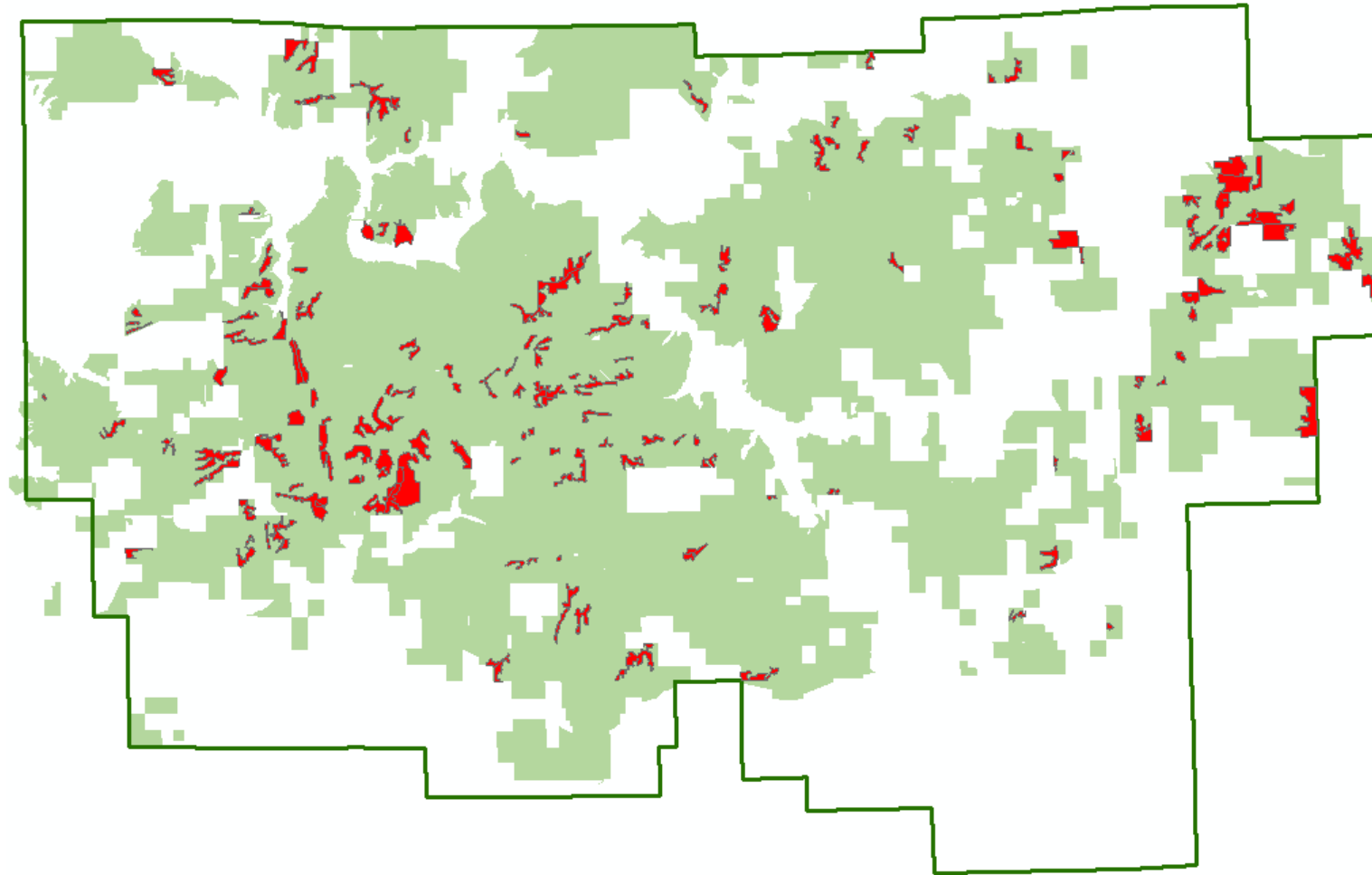


Pine that isn't native was planted



Shortleaf pine

Shortleaf pine on one unit of the Hoosier



Winner under all climate scenarios,

- ▶ Shortleaf pine is projected to have a large increase in Indiana under either scenario in the Central Hardwoods Ecosystem Vulnerability Assessment and Synthesis
- ▶ Approximately 5% of the Hoosier is shortleaf pine
- ▶ Established pine plantations are healthy and regenerate naturally
- ▶ Hardwood quality and species diversity are difficult to obtain because of the history and poor sites on the old agricultural fields
- ▶ Will foresters and Indiana landowners buy into it?

Indiana SAF Field Tour circa 2016ish

