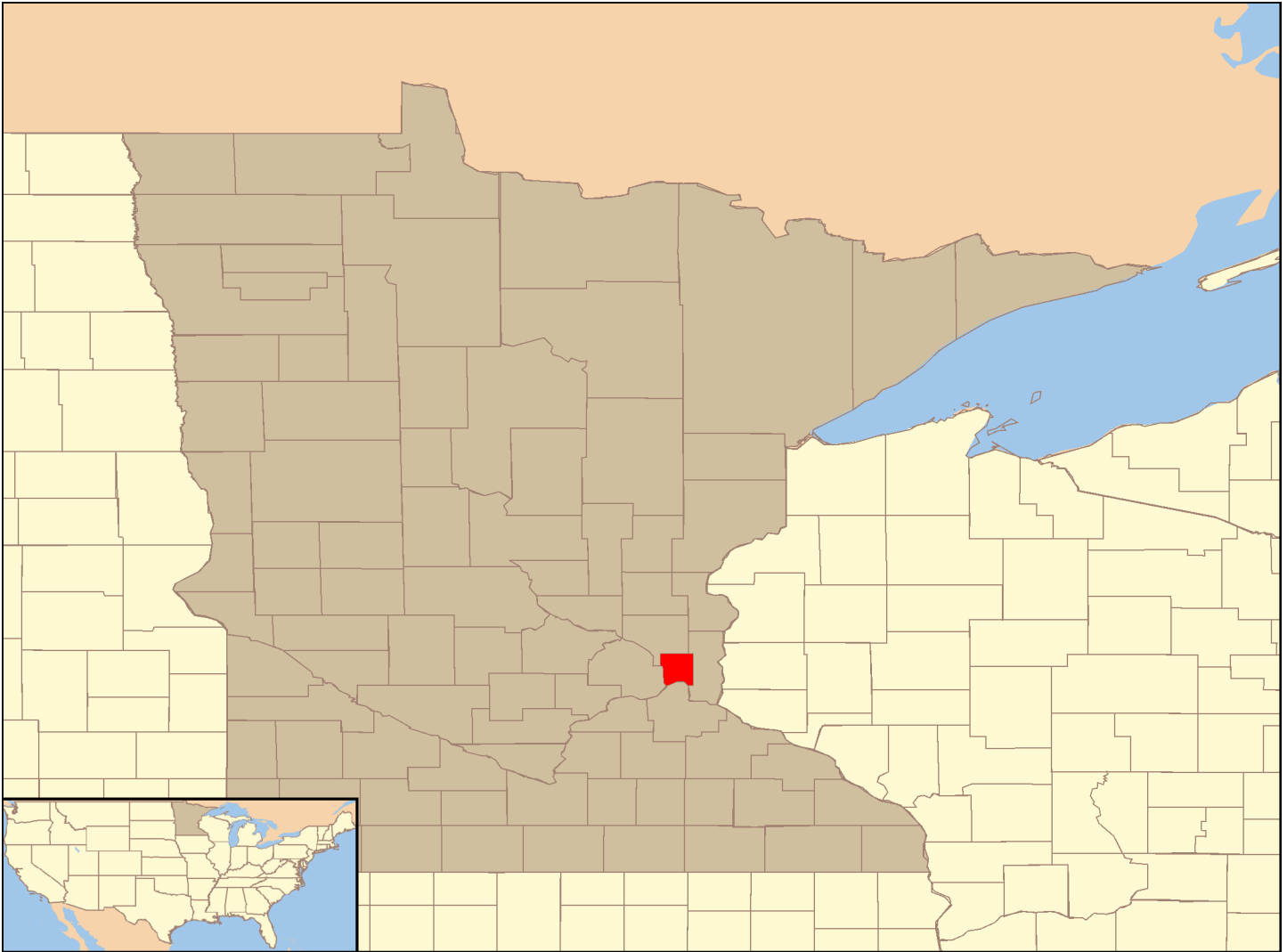




U.S. Geological Survey - National Climate Change Viewer

Summary of Ramsey County, Minnesota



December 1, 2016

1 Maximum 2-m Air Temperature

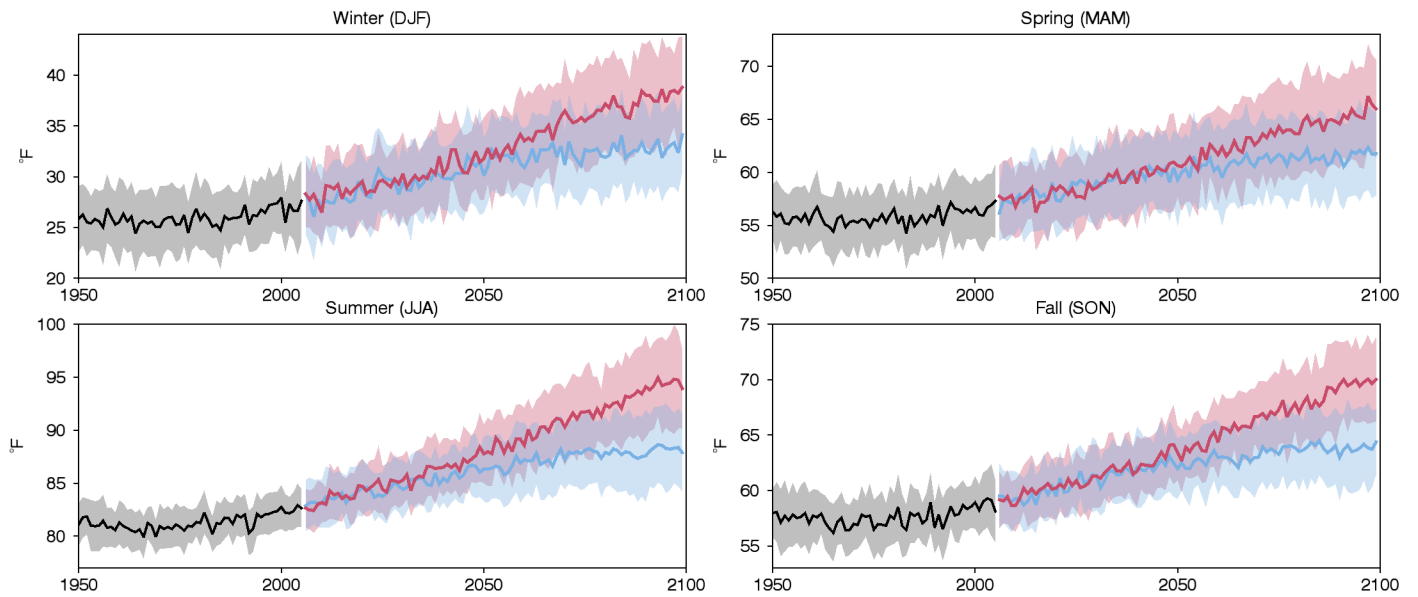


Figure 1: Seasonal average time series of maximum 2-m air temperature for historical (black), RCP4.5 (blue) and RCP8.5 (red). The historical period ends in 2005 and the future periods begin in 2006. The average of 30 CMIP5 models is indicated by the solid lines and their standard deviations are indicated by the respective shaded envelopes.

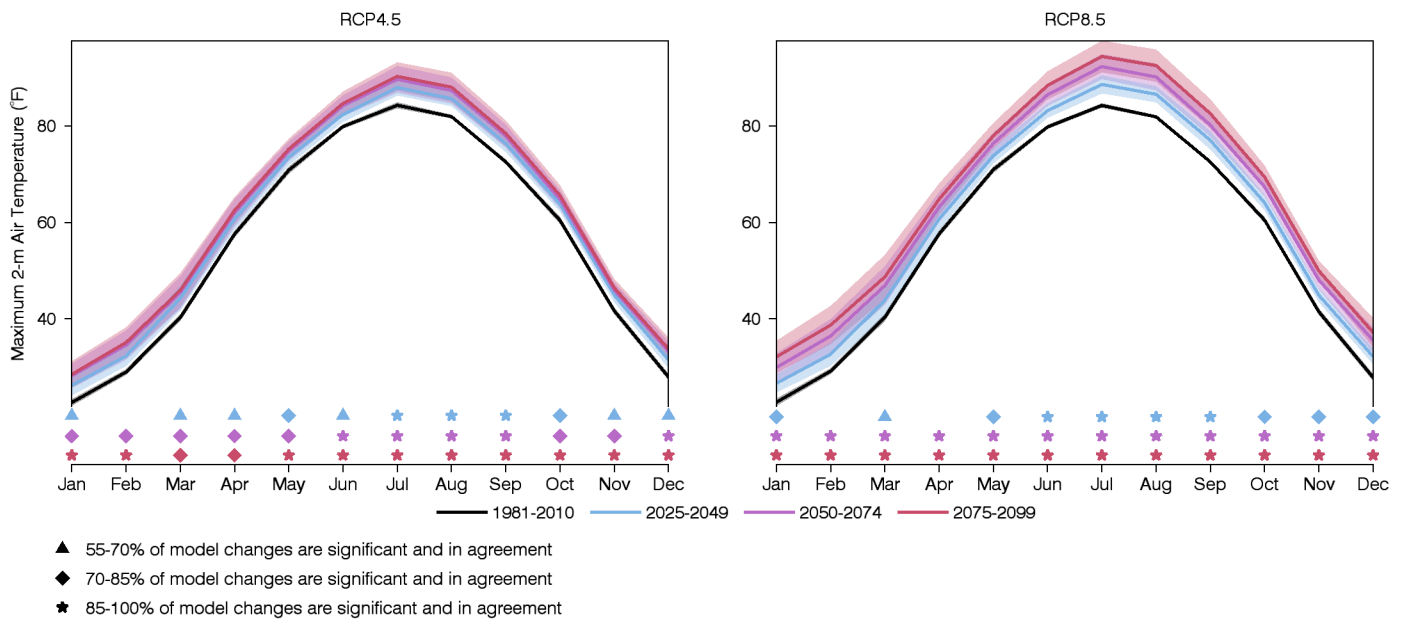


Figure 2: Monthly averages of maximum 2-m air temperature for four time periods for the RCP4.5 (left) and RCP8.5 (right) simulations. The average of 30 CMIP5 models is indicated by the solid lines and their standard deviations are indicated by the respective shaded envelopes. Triangle, diamond and square symbols indicate the percent of models that simulate future minus present changes that are of the same sign and significant. A two-sided Students t-test is used to establish significance ($\rho \leq 0.05$).

2 Minimum 2-m Air Temperature

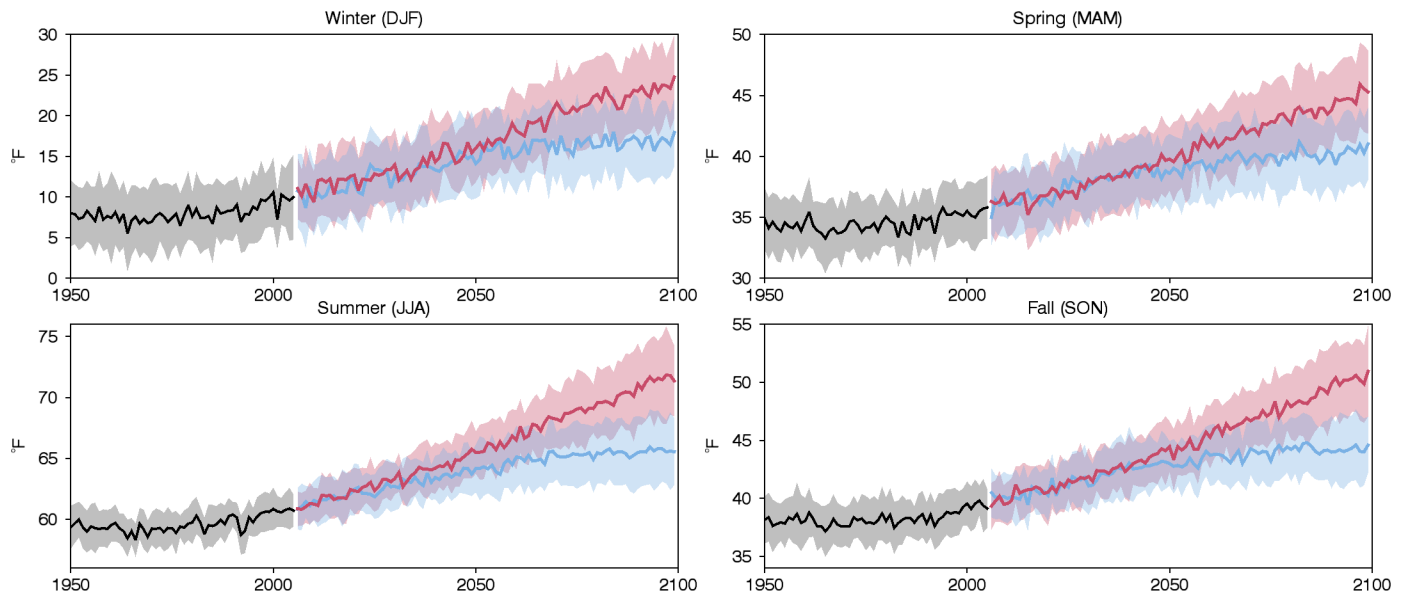


Figure 3: Seasonal average time series of minimum 2-m air temperature for historical (black), RCP4.5 (blue) and RCP8.5 (red). The historical period ends in 2005 and the future periods begin in 2006. The average of 30 CMIP5 models is indicated by the solid lines and their standard deviations are indicated by the respective shaded envelopes.

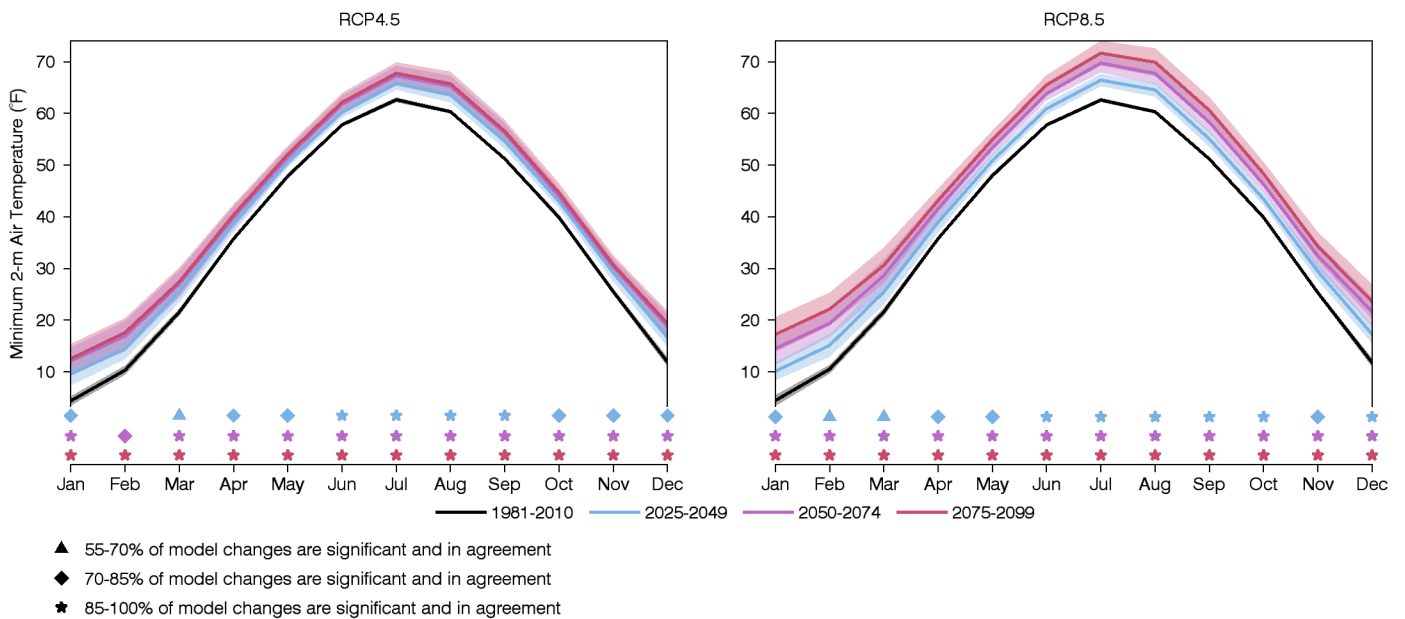


Figure 4: Monthly averages of minimum 2-m air temperature for four time periods for the RCP4.5 (left) and RCP8.5 (right) simulations. The average of 30 CMIP5 models is indicated by the solid lines and their standard deviations are indicated by the respective shaded envelopes. Triangle, diamond and square symbols indicate the percent of models that simulate future minus present changes that are of the same sign and significant. A two-sided Students t-test is used to establish significance ($\rho \leq 0.05$).

3 Precipitation

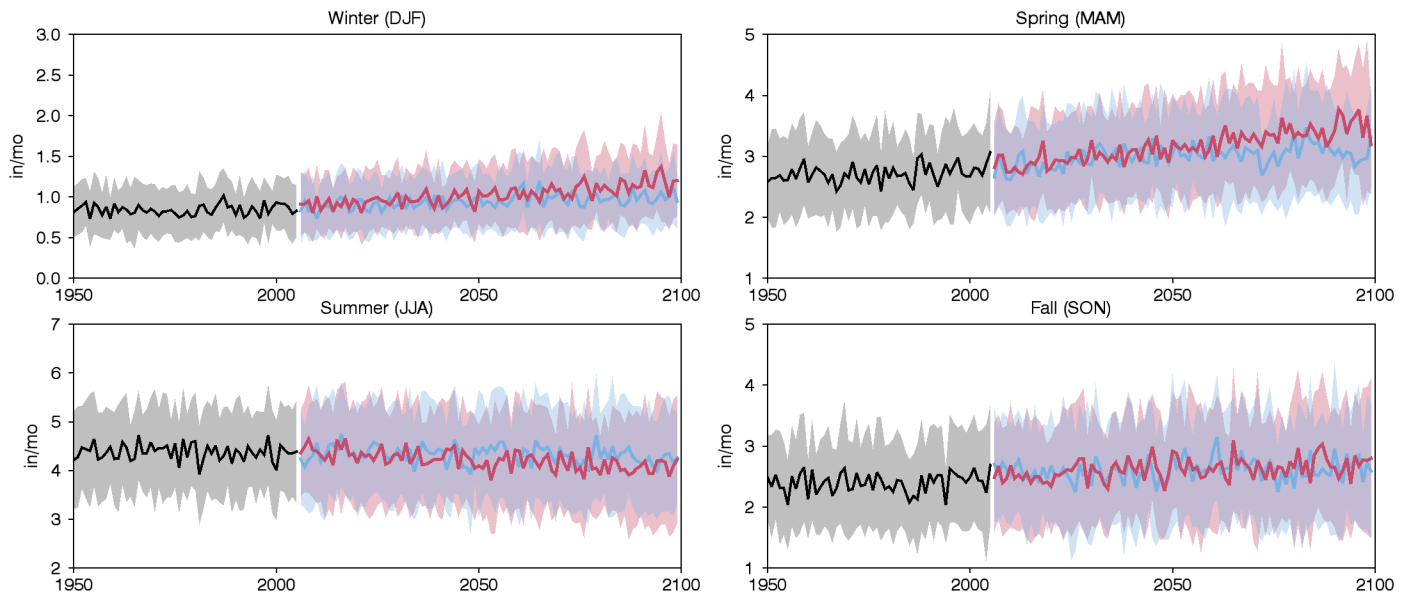


Figure 5: Seasonal average time series of precipitation for historical (black), RCP4.5 (blue) and RCP8.5 (red). The historical period ends in 2005 and the future periods begin in 2006. The average of 30 CMIP5 models is indicated by the solid lines and their standard deviations are indicated by the respective shaded envelopes.

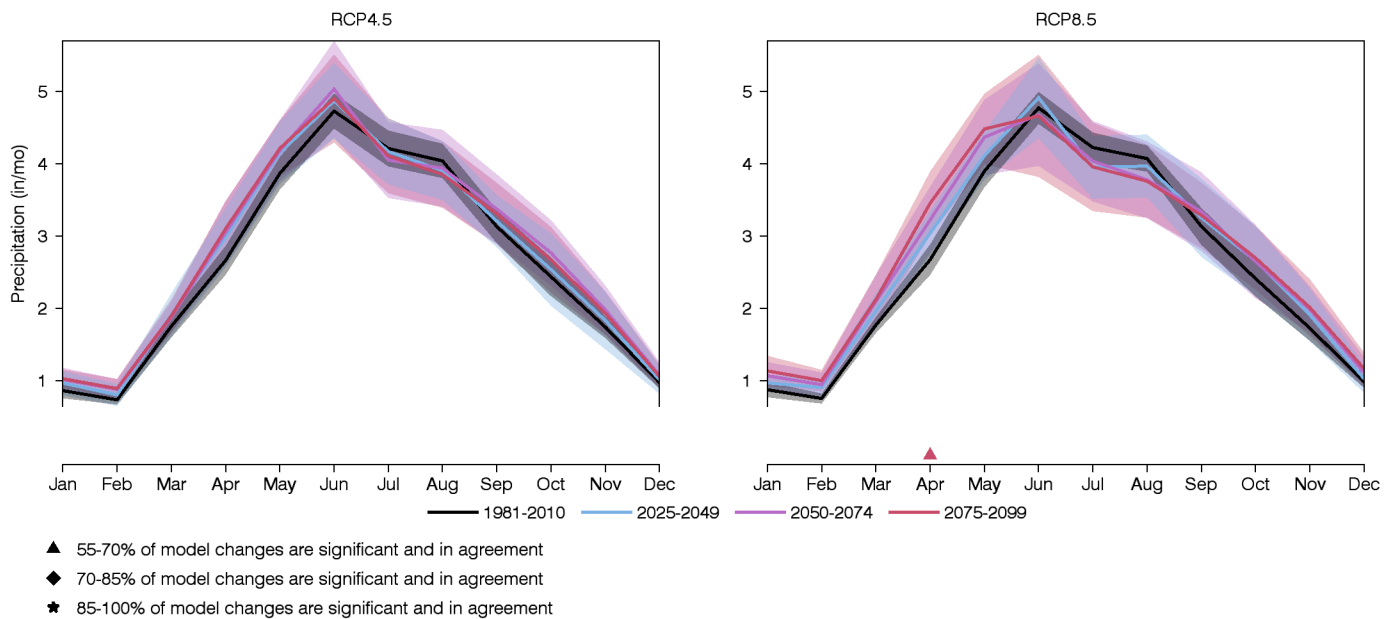


Figure 6: Monthly averages of precipitation for four time periods for the RCP4.5 (left) and RCP8.5 (right) simulations. The average of 30 CMIP5 models is indicated by the solid lines and their standard deviations are indicated by the respective shaded envelopes. Triangle, diamond and square symbols indicate the percent of models that simulate future minus present changes that are of the same sign and significant. A two-sided Students t-test is used to establish significance ($\rho \leq 0.05$).

4 Snow Water Equivalent

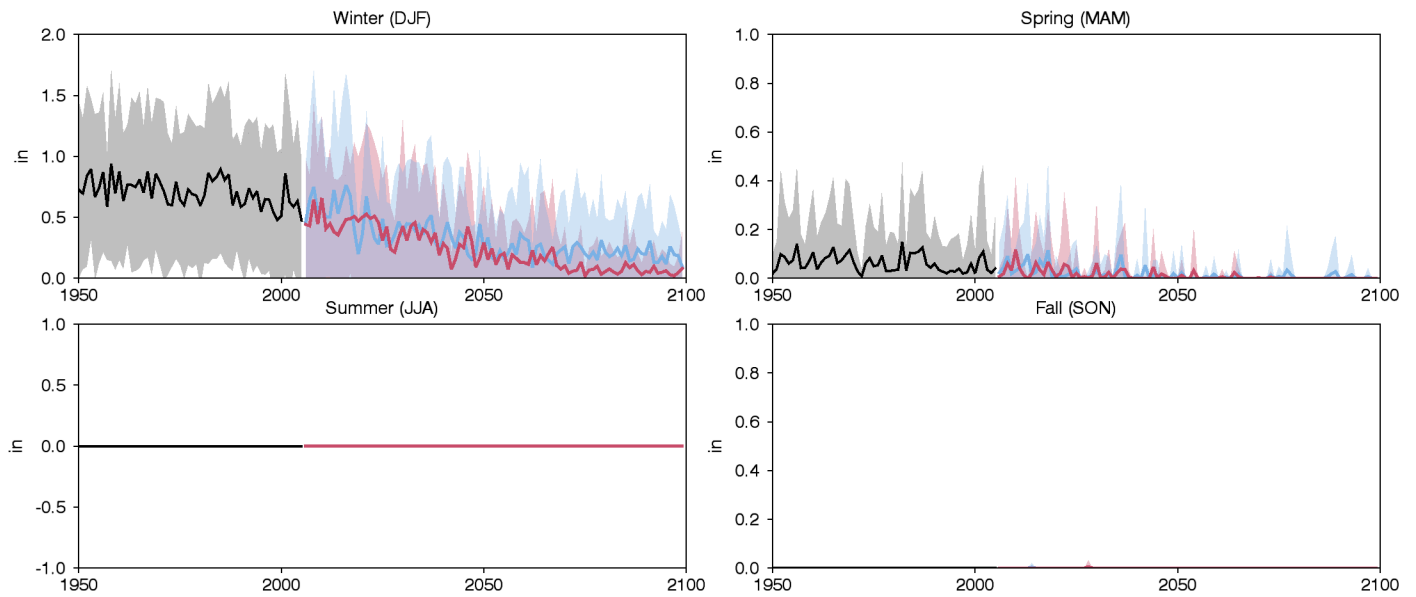


Figure 7: Seasonal average time series of snow water equivalent for historical (black), RCP4.5 (blue) and RCP8.5 (red). The historical period ends in 2005 and the future periods begin in 2006. The average of 30 CMIP5 models is indicated by the solid lines and their standard deviations are indicated by the respective shaded envelopes.

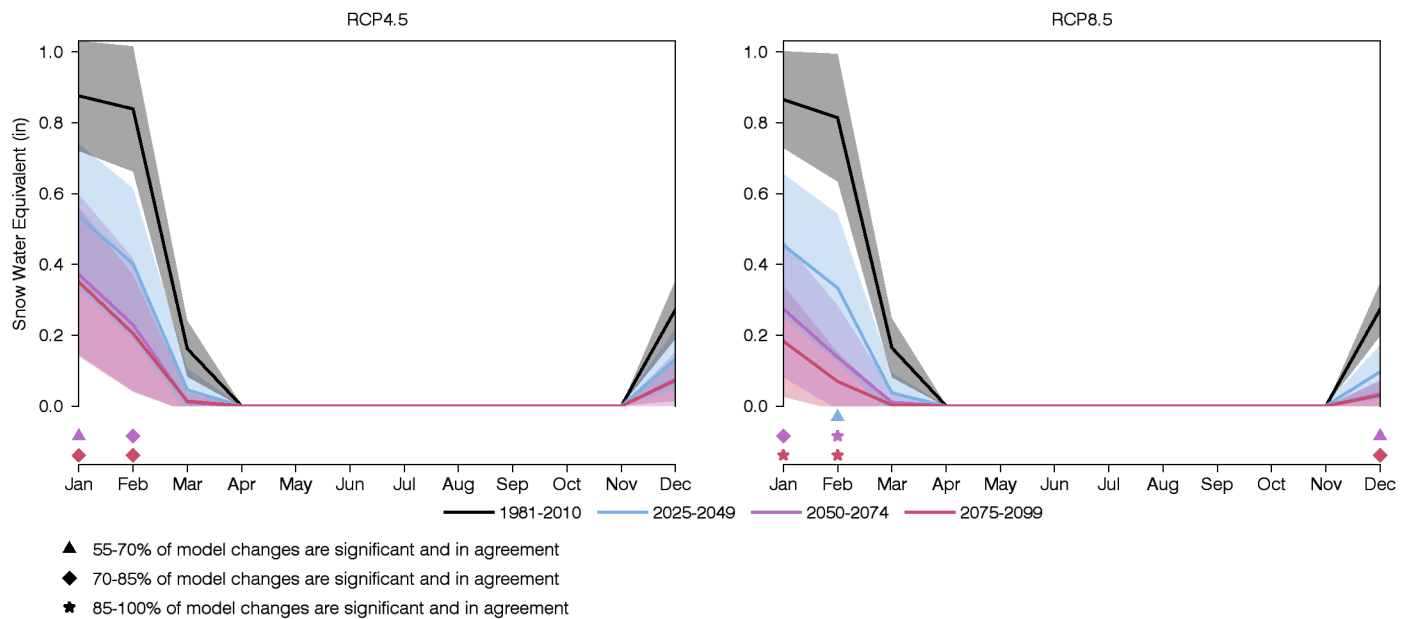


Figure 8: Monthly averages of snow water equivalent for four time periods for the RCP4.5 (left) and RCP8.5 (right) simulations. The average of 30 CMIP5 models is indicated by the solid lines and their standard deviations are indicated by the respective shaded envelopes. Triangle, diamond and square symbols indicate the percent of models that simulate future present changes that are of the same sign and significant. A two-sided Students t-test is used to establish significance ($\rho \leq 0.05$).

5 Runoff

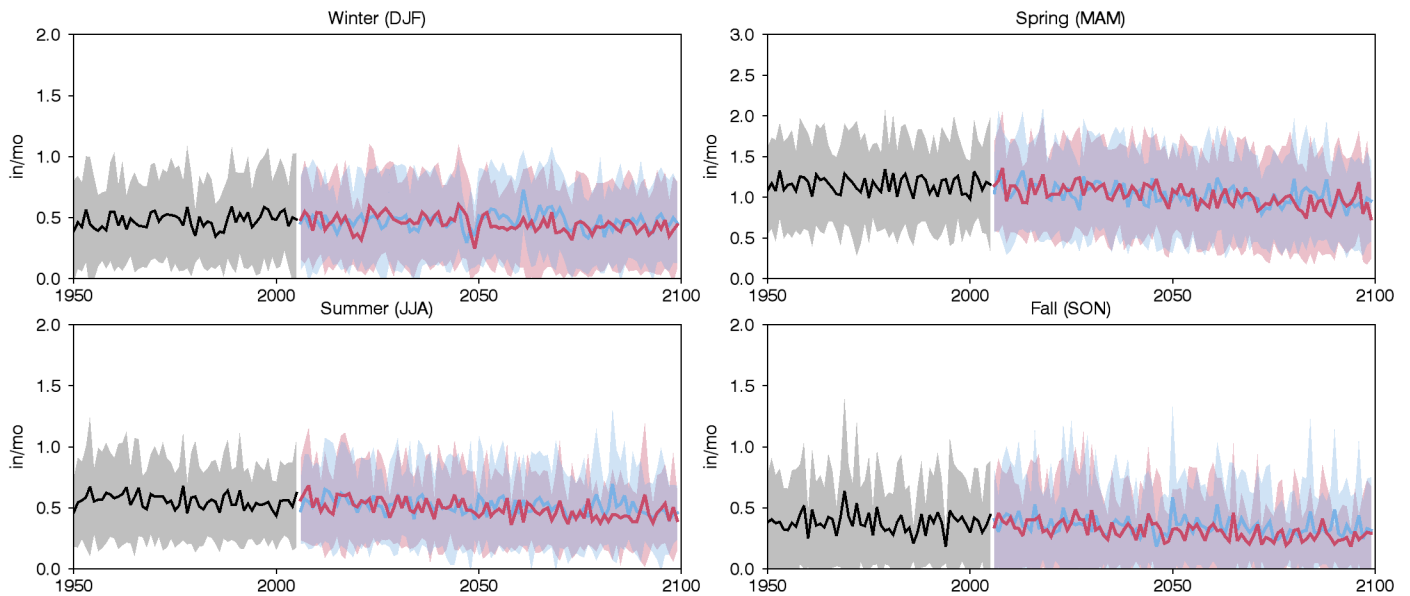


Figure 9: Seasonal average time series of runoff for historical (black), RCP4.5 (blue) and RCP8.5 (red). The historical period ends in 2005 and the future periods begin in 2006. The average of 30 CMIP5 models is indicated by the solid lines and their standard deviations are indicated by the respective shaded envelopes.

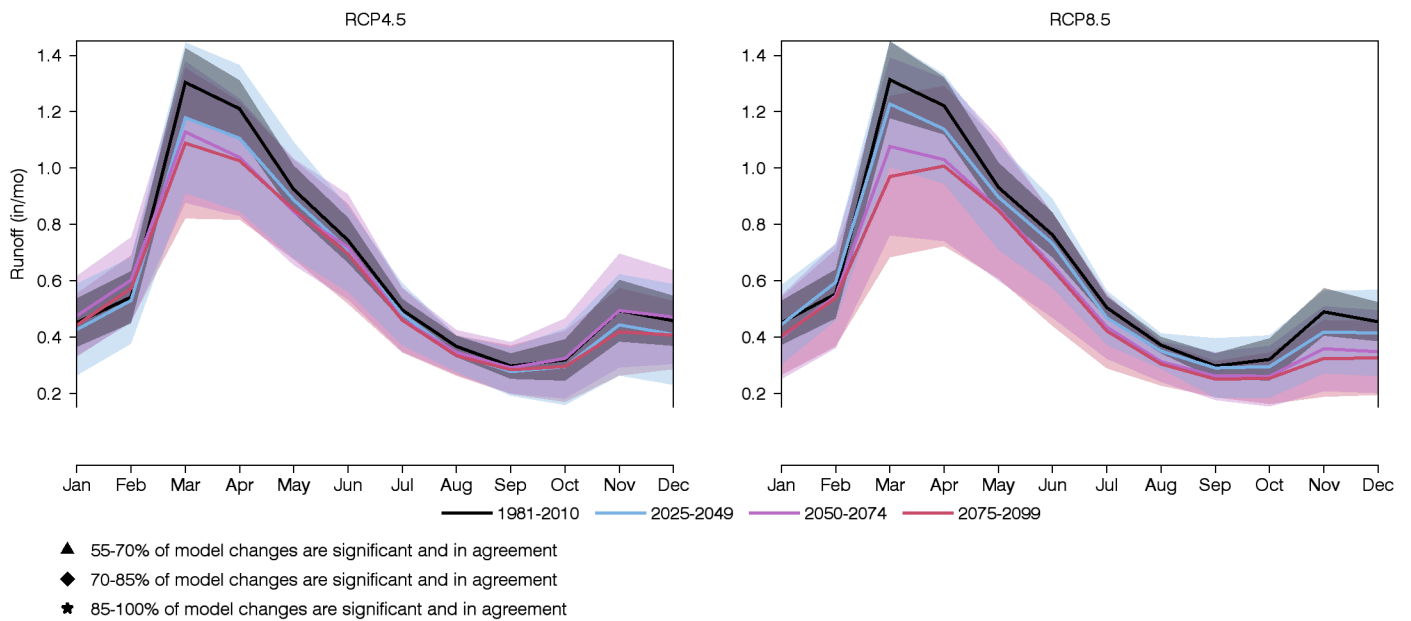


Figure 10: Monthly averages of runoff for four time periods for the RCP4.5 (left) and RCP8.5 (right) simulations. The average of 30 CMIP5 models is indicated by the solid lines and their standard deviations are indicated by the respective shaded envelopes. Triangle, diamond and square symbols indicate the percent of models that simulate future minus present changes that are of the same sign and significant. A two-sided Students t-test is used to establish significance ($\rho \leq 0.05$).

6 Soil Water Storage

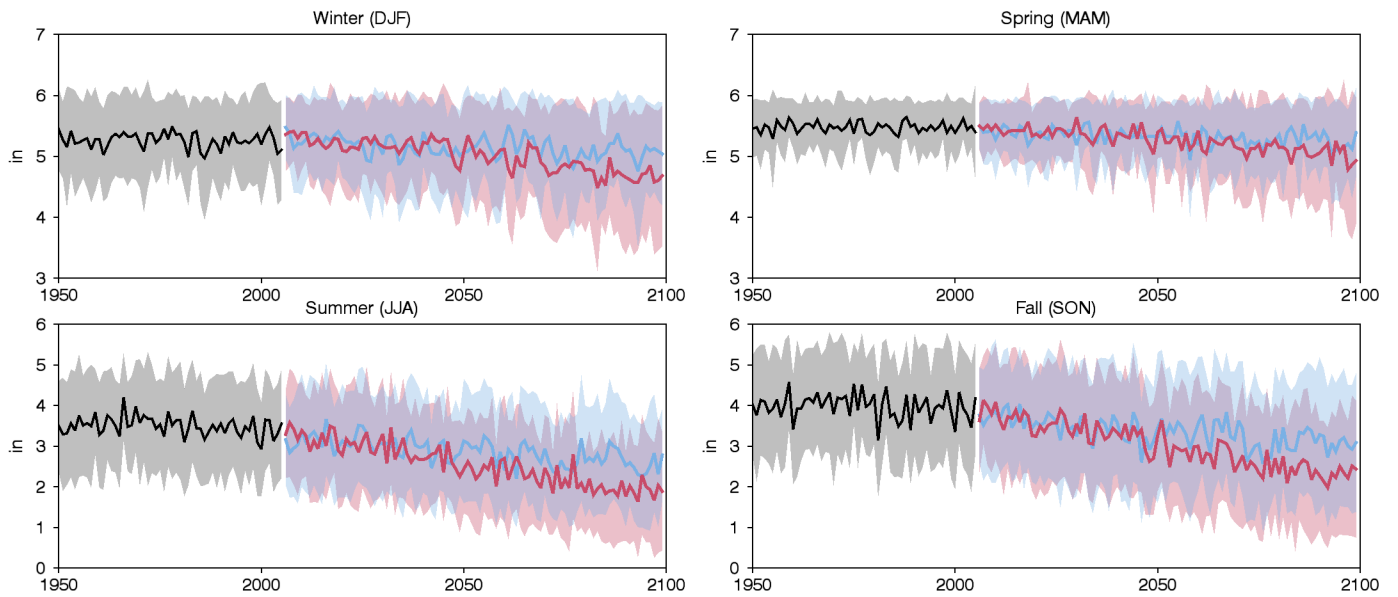


Figure 11: Seasonal average time series of soil water storage for historical (black), RCP4.5 (blue) and RCP8.5 (red). The historical period ends in 2005 and the future periods begin in 2006. The average of 30 CMIP5 models is indicated by the solid lines and their standard deviations are indicated by the respective shaded envelopes.

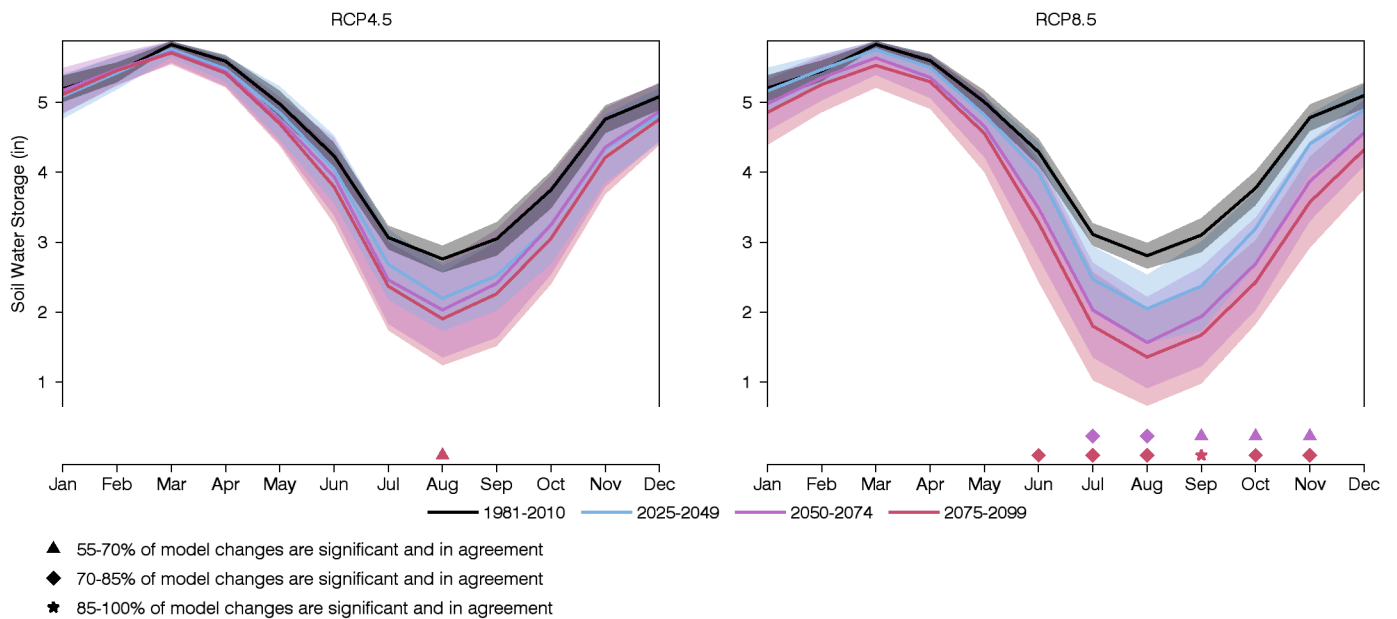


Figure 12: Monthly averages of soil water storage for four time periods for the RCP4.5 (left) and RCP8.5 (right) simulations. The average of 30 CMIP5 models is indicated by the solid lines and their standard deviations are indicated by the respective shaded envelopes. Triangle, diamond and square symbols indicate the percent of models that simulate future minus present changes that are of the same sign and significant. A two-sided Students t-test is used to establish significance ($\rho \leq 0.05$).

7 Evaporative Deficit

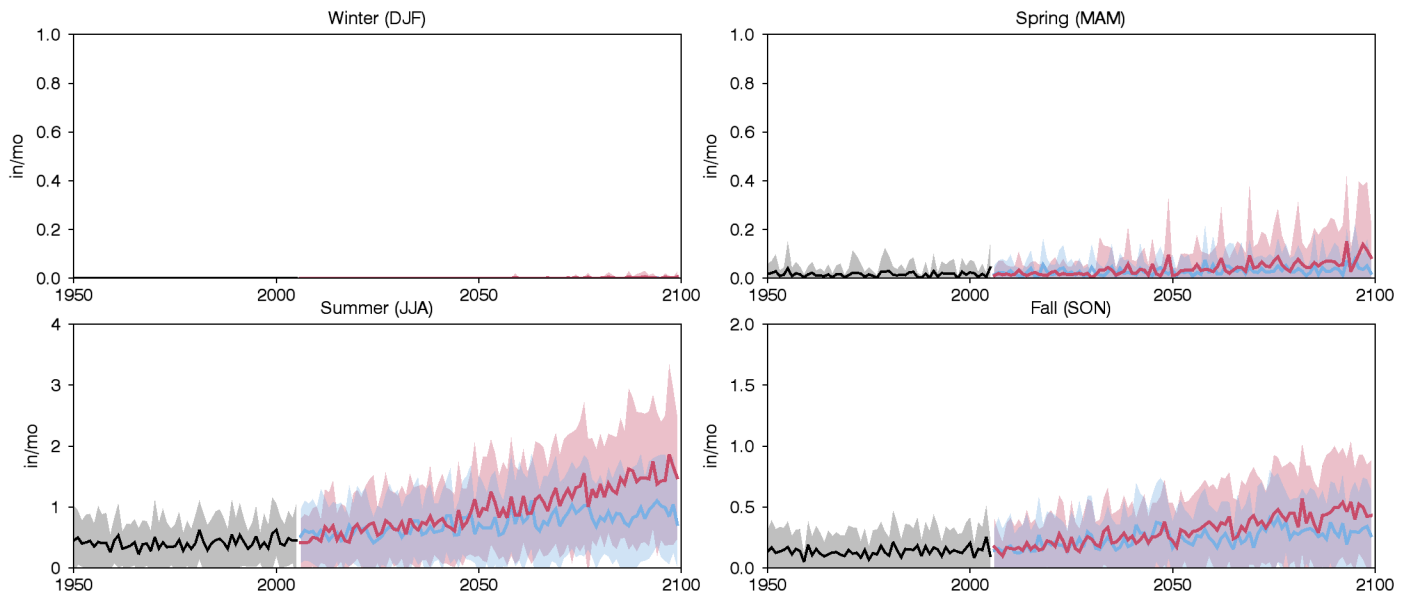


Figure 13: Seasonal average time series of evaporative deficit for historical (black), RCP4.5 (blue) and RCP8.5 (red). The historical period ends in 2005 and the future periods begin in 2006. The average of 30 CMIP5 models is indicated by the solid lines and their standard deviations are indicated by the respective shaded envelopes.

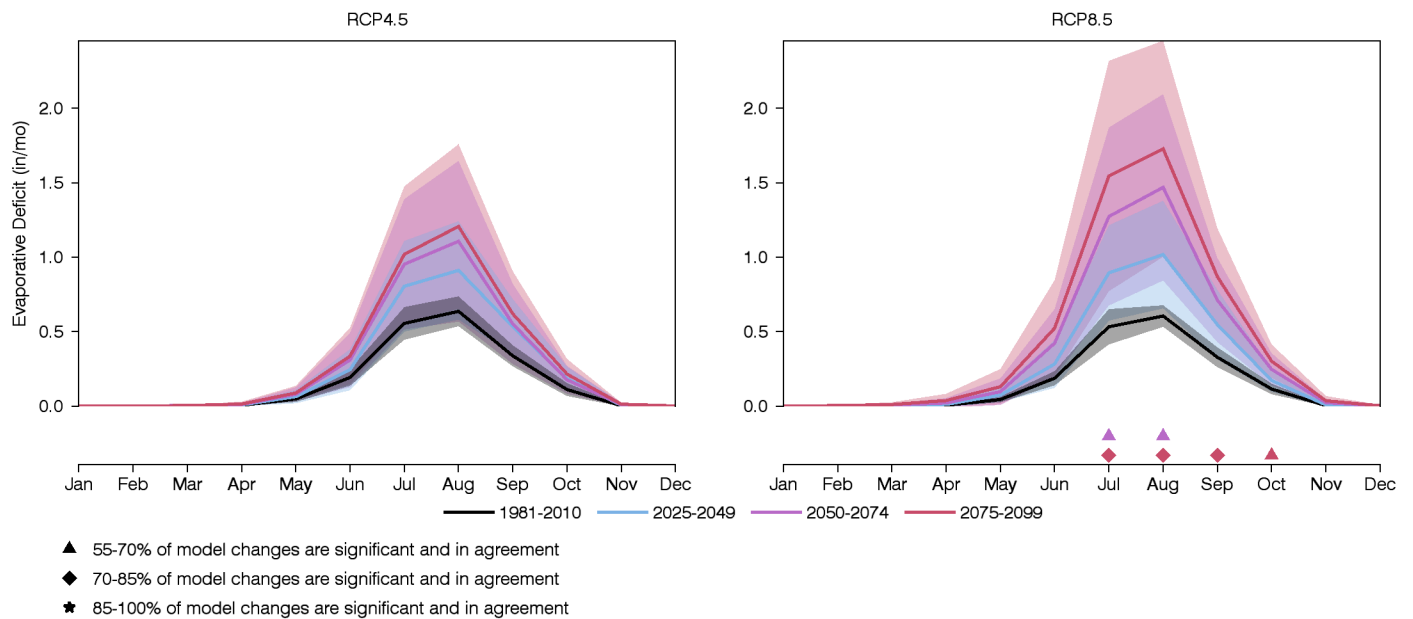


Figure 14: Monthly averages of evaporative deficit for four time periods for the RCP4.5 (left) and RCP8.5 (right) simulations. The average of 30 CMIP5 models is indicated by the solid lines and their standard deviations are indicated by the respective shaded envelopes. Triangle, diamond and square symbols indicate the percent of models that simulate future minus present changes that are of the same sign and significant. A two-sided Students t-test is used to establish significance ($\rho \leq 0.05$).

8 Data

The temperature and precipitation summaries are created by spatially averaging the NASA NEX-DCP30 data set (Thrasher et al., 2013). The water-balance variables snow water equivalent, runoff, soil water storage and evaporative deficit are simulated by using the NEX-DCP30 temperature and precipitation as input to a simple model (McCabe and Wolock, 2007). The water-balance model accounts for the partitioning of water through the various components of the hydrologic system, but does not account for groundwater, diversions or regulation by impoundments.

9 Models

ACCESS1-0	bcc-csm1-1	bcc-csm1-1-m	BNU-ESM	CanESM2	CCSM4
CESM1-BGC	CMCC-CM	CNRM-CM5	CSIRO-Mk3-6-0	FGOALS-g2	FIO-ESM
GFDL-CM3	GFDL-ESM2G	GFDL-ESM2M	GISS-E2-R	HadGEM2-AO	HadGEM2-CC
HadGEM2-ES	inmcm4	IPSL-CM5A-LR	IPSL-CM5A-MR	IPSL-CM5B-LR	MIROC5
MIROC-ESM	MIROC-ESM-CHEM	MPI-ESM-LR	MPI-ESM-MR	MRI-CGCM3	NorESM1-M

10 Citation Information

Alder, J. R. and S. W. Hostetler, 2013. USGS National Climate Change Viewer. US Geological Survey http://www.usgs.gov/climate_landuse/clu_rd/nccv.asp doi:10.5066/F7W9575T.

Hostetler, S.W. and Alder, J.R., 2016. Implementation and evaluation of a monthly water balance model over the U.S. on an 800 m grid. *Water Resources Research*, 52, doi:10.1002/2016WR018665.

Thrasher, B., J. Xiong, W. Wang, F. Melton, A. Michaelis, and R. Nemani, 2013. New downscaled climate projections suitable for resource management in the U.S. *Eos, Transactions American Geophysical Union* 94, 321-323, doi:10.1002/2013EO370002.

11 Disclaimer

These freely available, derived data sets were produced by J. Alder and S. Hostetler, US Geological Survey (USGS). The original climate data are from the NEX-DCP30 dataset, which was prepared by the Climate Analytics Group and NASA Ames Research Center using the NASA Earth Exchange, and is distributed by the NASA Center for Climate Simulation. No warranty expressed or implied is made by the USGS regarding the display or utility of the derived data on any other system, or for general or scientific purposes, nor shall the act of distribution constitute any such warranty. The USGS shall not be held liable for improper or incorrect use of the data described and/or contained herein.